

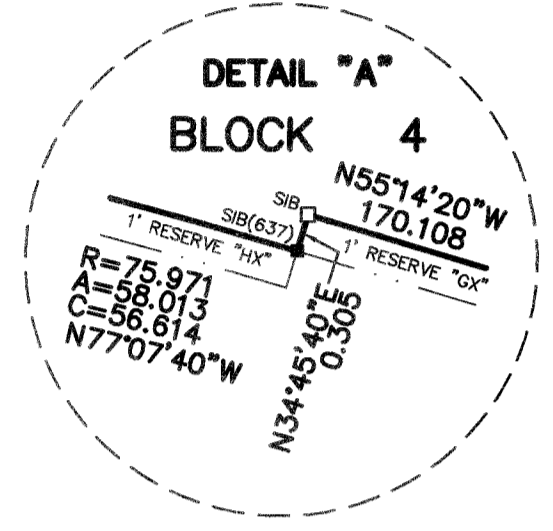
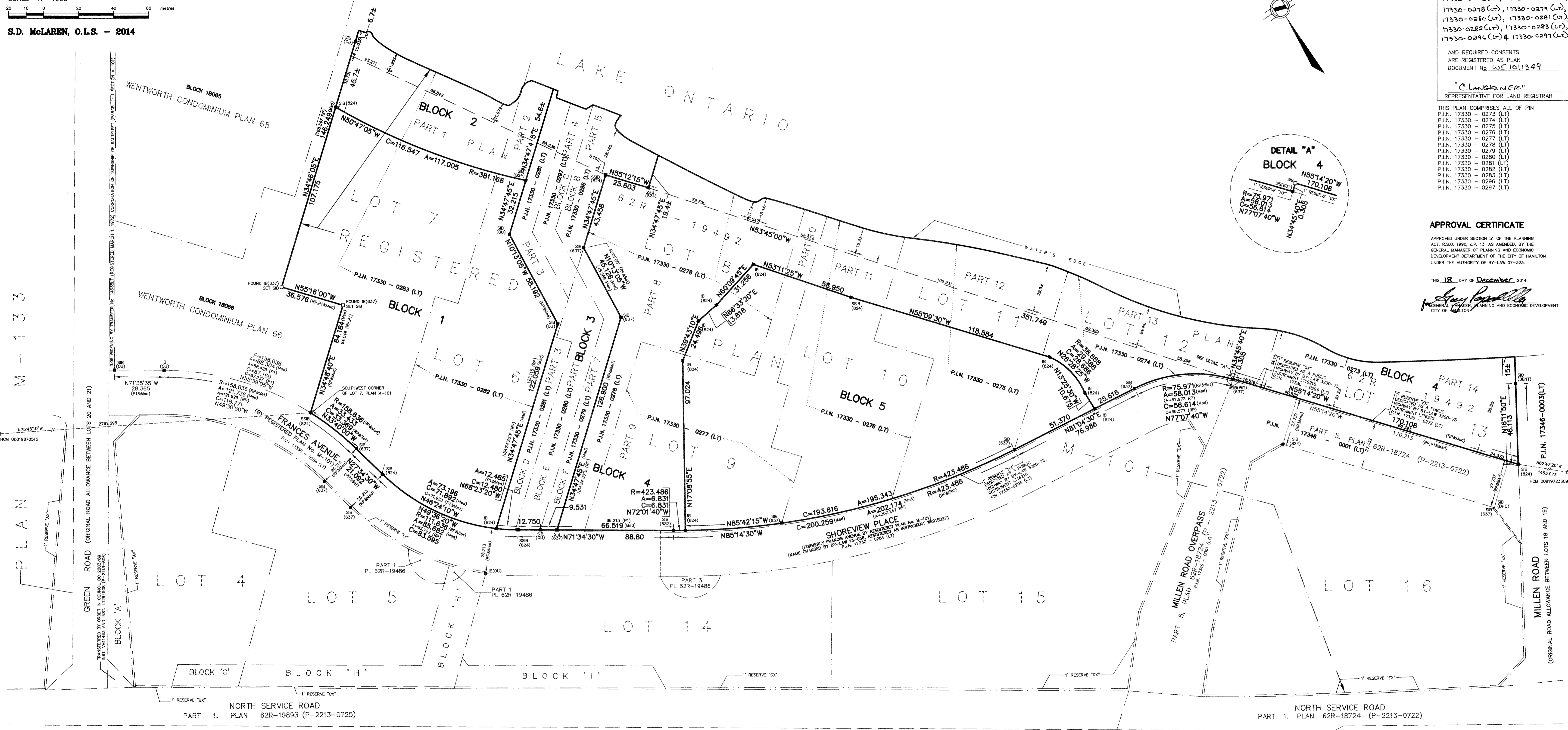
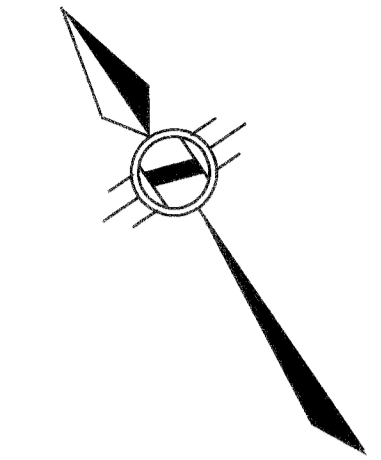
PLAN OF SUBDIVISION
OF ALL OF
LOTS 6 TO 13 (INCLUSIVE), AND
BLOCKS B, C, D, E AND F
REGISTERED PLAN M-101
IN THE
CITY OF HAMILTON

SCALE 1: 1000
0 10 20 30 40 50 metres

S.D. McLAREN, O.L.S. - 2014

PLAN 62M-1211

I CERTIFY THAT THIS PLAN 62M-1211 IS REGISTERED IN THE LAND REGISTRY OFFICE FOR THE LAND TITLES DIVISION OF WENTWORTH(62) AT 11:08 O'CLOCK ON THE 24th DAY OF DECEMBER 2014 AND ENTERED IN THE REGISTER FOR PROPERTY IDENTIFIERS: 17330-0273(LT), 17330-0274(LT), 17330-0275(LT), 17330-0276(LT), 17330-0277(LT), 17330-0278(LT), 17330-0279(LT), 17330-0280(LT), 17330-0281(LT), 17330-0282(LT), 17330-0283(LT), 17330-0284(LT) & 17330-0297(LT) AND REQUIRED CONSENTS ARE REGISTERED AS PLAN DOCUMENT No. 62E 101349 REPRESENTATIVE FOR LAND REGISTRAR



THIS PLAN COMPRISES ALL OF PIN P.I.N. 17330 - 0273 (LT) P.I.N. 17330 - 0274 (LT) P.I.N. 17330 - 0275 (LT) P.I.N. 17330 - 0276 (LT) P.I.N. 17330 - 0277 (LT) P.I.N. 17330 - 0278 (LT) P.I.N. 17330 - 0279 (LT) P.I.N. 17330 - 0280 (LT) P.I.N. 17330 - 0281 (LT) P.I.N. 17330 - 0282 (LT) P.I.N. 17330 - 0283 (LT) P.I.N. 17330 - 0284 (LT) P.I.N. 17330 - 0297 (LT)

APPROVAL CERTIFICATE

APPROVED UNDER SECTION 51 OF THE PLANNING ACT, R.S.O. 1990, c.P. 13, AS AMENDED, BY THE GENERAL MANAGER OF PLANNING AND ECONOMIC DEVELOPMENT DEPARTMENT OF THE CITY OF HAMILTON UNDER THE AUTHORITY OF BY-LAW 07-323.

THIS 18 DAY OF December 2014
Lucy Lapaglia
GENERAL MANAGER, PLANNING AND ECONOMIC DEVELOPMENT
CITY OF HAMILTON

NOTE:
ALL PLANTED BARS ARE 1B UNLESS SHOWN OTHERWISE.

BEARING NOTE:
BEARINGS ARE MTM GRID, DERIVED FROM SPECIFIED CONTROL POINTS 00819870515 AND 00919723309, MTM ZONE 10, NAD83 (ORIGINAL)

NOTE:
DISTANCES ARE GROUND AND CAN BE CONVERTED TO GRID BY MULTIPLYING BY THE COMBINED SCALE FACTOR OF 0.999896715

INTEGRATION DATA

POINT ID	NORTHING	EASTING
HCM 00819870515	4789614.020	283046.836
HCM 00919723309	4789515.364	282659.922

COORDINATES CANNOT, IN THEMSELVES, BE USED TO RE-ESTABLISH CORNERS OR BOUNDARIES SHOWN ON THIS PLAN.

OWNER'S CERTIFICATE

THIS IS TO CERTIFY THAT:
1. BLOCKS 1, 2, 3, 4 AND 5 HAVE BEEN LAID OUT IN ACCORDANCE WITH OUR INSTRUCTIONS.
OWNER: LPI REALTY RESIDENTIAL INC.

DECEMBER 11, 2014
DATE
Lucy Lapaglia
I HAVE THE AUTHORITY TO BIND THE CORPORATION

METRIC NOTE

DISTANCES SHOWN ON THIS PLAN ARE IN METRES AND CAN BE CONVERTED TO FEET BY DIVIDING BY 0.3048

LEGEND:

- DENOTES MONUMENT SET
- DENOTES MONUMENT FOUND
- IB DENOTES IRON BAR
- SB DENOTES STANDARD IRON BAR
- SSB DENOTES SHORT STANDARD IRON BAR
- 824 DENOTES A.T. McLAREN, O.L.S.
- MM DENOTES MEASURED
- RP DENOTES REGISTERED PLAN M-101

SURVEYOR'S CERTIFICATE

I CERTIFY THAT:
1. THIS SURVEY AND PLAN ARE CORRECT AND IN ACCORDANCE WITH THE SURVEYS ACT, THE SURVEYORS ACT AND THE LAND TITLES ACT AND THE REGULATIONS MADE UNDER THEM.
2. THE SURVEY WAS COMPLETED ON THE 12th DAY OF DECEMBER, 2012
DECEMBER 10, 2014
DATE
S. Dan McLaren, O.L.S.
S. DAN McLAREN, O.L.S.

A.T. McLaren Limited
LEGAL AND ENGINEERING SURVEYS

69 JOHN STREET SOUTH, SUITE 230
HAMILTON, ONTARIO, L8N 2B9
PHONE (905) 527-8559 FAX (905) 527-0032
Dwg.No. 32505-M