

# MAIN STREET WEST

(ORIGINAL ROAD ALLOWANCE BETWEEN CONCESSIONS 2 & 3)

PIN 17142-0028 (LT)

## TOPOGRAPHIC SURVEY

OF PART OF  
LOTS 1 & 5  
AND ALL OF

LOTS 2 & 3

BLOCK 1, RANGE 1

JAMES MILLS SURVEY

IN THE BLOCK BOUNDED BY

BETWEEN RAY ST, JACKSON ST, QUEEN ST & MAIN ST

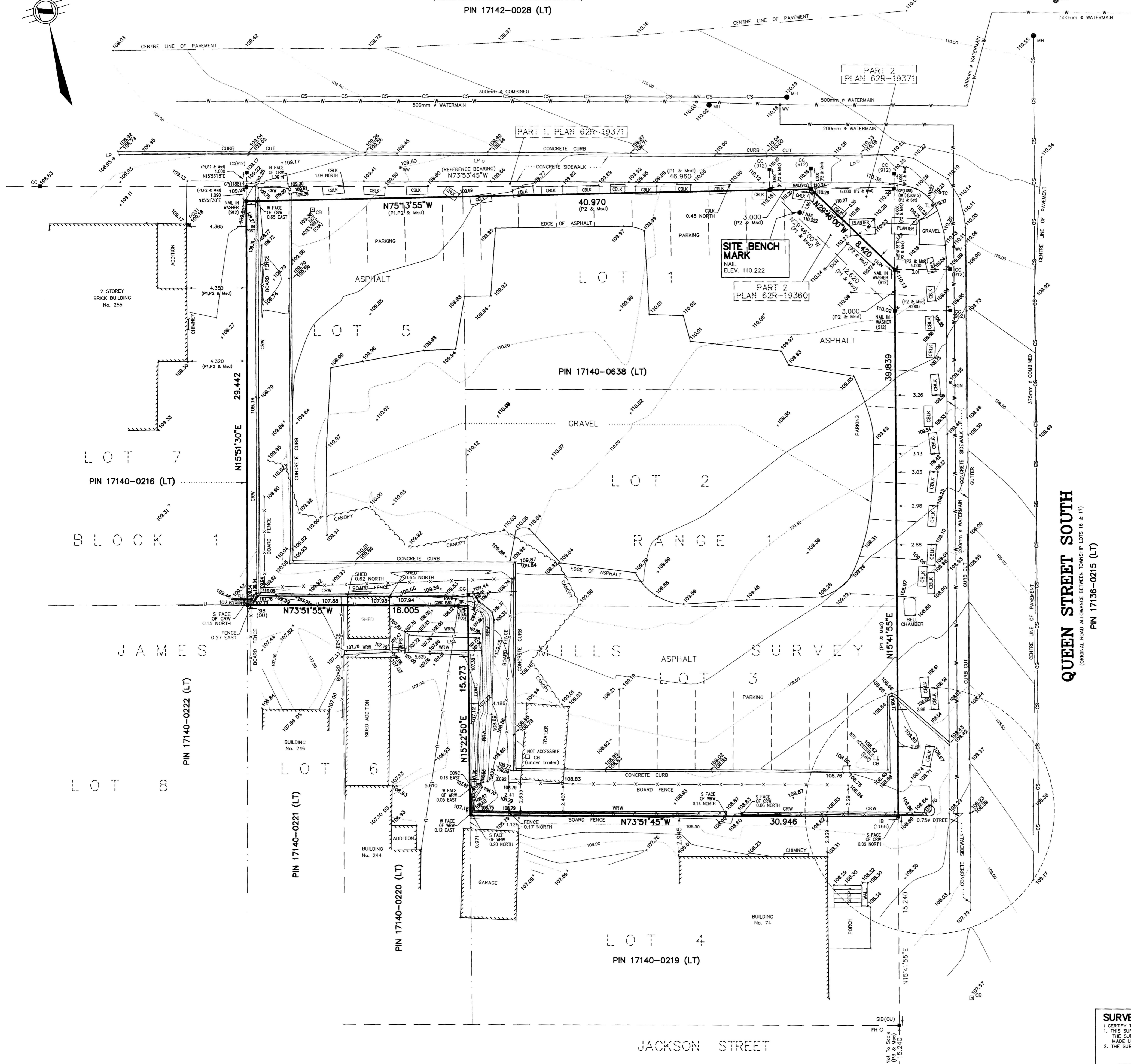
IN THE

CITY OF HAMILTON

SCALE 1:150 METRIC

3 1.5 0 3 6 9 metres

S.D. McLAREN, O.L.S. - 2017



### LEGEND:

- DENOTES MONUMENT SET
- IB IRON BAR
- CC CONCRETE PIN
- SB SHORT STANDARD IRON BAR
- S24 S.A. J. CLARKE, O.L.S.
- 912 C.A. SEXTON, O.L.S.
- 1188 CITY OF HAMILTON
- QJ ORIGIN UNKNOWN
- WT WITNESS
- Md MEASURED
- P1 PLAN 62R-19360
- P2 PLAN 62R-19371
- P3 PLAN BA-653
- TC TRAFFIC CHAMBER
- TL TRAFFIC LIGHT
- LP LIGHT POST
- WV WATER VALVE
- CBLK CONCRETE BLOCK
- CRW CONCRETE RETAINING WALL
- WRW WOOD RETAINING WALL
- RRW ROCK RETAINING WALL
- HP HYDRO POLE
- BH BELL MANHOLE
- BMH BELL MANHOLE
- CB CATCH BASIN
- DS DOOR SILL
- U OVERHEAD UTILITIES
- DTREE DECIDUOUS TREE
- φ DIAMETER

### BENCHMARK:

MONUMENT 0011965U649

CITY OF HAMILTON BENCH MARK,  
HOUSE NO. 34 QUEEN STREET SOUTH, AT  
SOUTHWEST CORNER OF  
INTERSECTION OF GEORGE STREET, PLATE  
IN NORTH BRICK WALL AT  
NORTHEAST CORNER.

ELEVATION: 112.302 metres CGVD-1928:1978

### NOTE:

UNDERGROUND SERVICE AND UTILITY LOCATIONS  
WERE DERIVED FROM CITY OF HAMILTON DRAWING  
No. Q 3, SEWERS (SHEET 1 OF 1) OCTOBER 18,  
1923 & DRAWING No. M.152 SEWERS AUGUST 1930

UNDERGROUND SERVICE AND UTILITY LOCATIONS  
MUST BE VERIFIED PRIOR TO CONSTRUCTION

INVERTS MUST BE VERIFIED PRIOR TO  
CONSTRUCTION

### METRIC NOTE

DISTANCES SHOWN ON THIS  
PLAN ARE IN METRES  
AND CAN BE CONVERTED  
TO FEET BY DIVIDING  
BY 0.3048

### BEARING NOTE:

BEARINGS ARE ASTROMONIC AND ARE  
REFERRED TO THE SOUTHERLY LIMIT OF  
MAIN STREET WEST AS SHOWN ON PLAN  
62R-19371 AS BEING N73°53'45\"/>

### SURVEYOR'S CERTIFICATE:

I CERTIFY THAT:  
1. THIS SURVEY AND PLAN ARE CORRECT AND IN ACCORDANCE WITH  
THE SURVEYORS ACT, THE SURVEYORS ACT AND THE REGULATIONS  
MADE UNDER THEM  
2. THE SURVEY WAS COMPLETED ON THE 15th DAY OF AUGUST, 2017

AUGUST 15, 2017  
DATE S. DAN McLAREN, O.L.S.

© S.D. McLAREN, O.L.S. - 2017. NO PERSON MAY COPY  
REPRODUCE, DISTRIBUTE OR ALTER THIS PLAN IN WHOLE OR IN  
PART WITHOUT THE WRITTEN PERMISSION OF S.D. McLAREN, O.L.S.

**A.T. McLaren Limited**  
LEGAL AND ENGINEERING SURVEYS

69 JOHN STREET SOUTH, SUITE 230  
HAMILTON, ONTARIO, L8N 2B9  
PHONE (905) 527-8559 FAX (905) 527-0032

Drawn: JB  
Checked: RBM  
Scale: 1:150  
Dwg. No. 35395