



LINTACK ARCHITECTS  
INCORPORATED



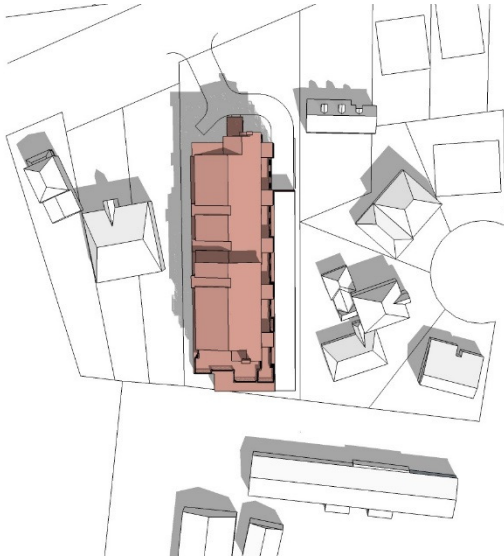
Tel: 905-522-6165 • Fax: 905-522-2209 • E-mail: [information@lintack.com](mailto:information@lintack.com) • [www.lintack.com](http://www.lintack.com)



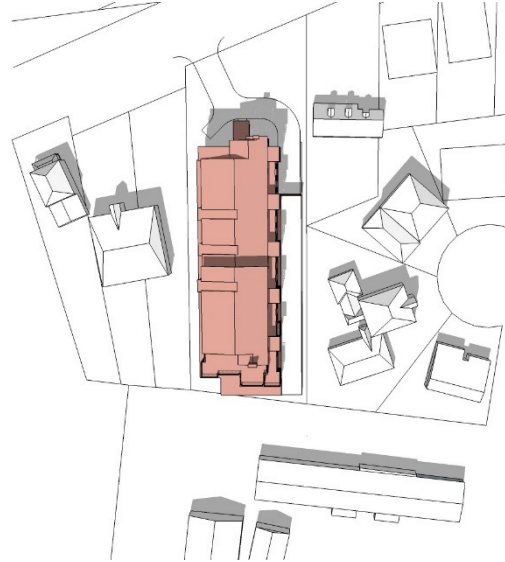
**Sun Shadow Study**  
154 Wilson Street East  
Ancaster, Ontario

October 2018

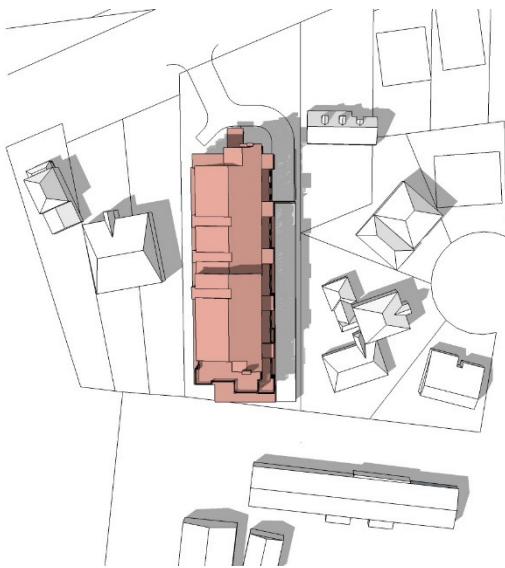
**March 21<sup>st</sup> 10am**



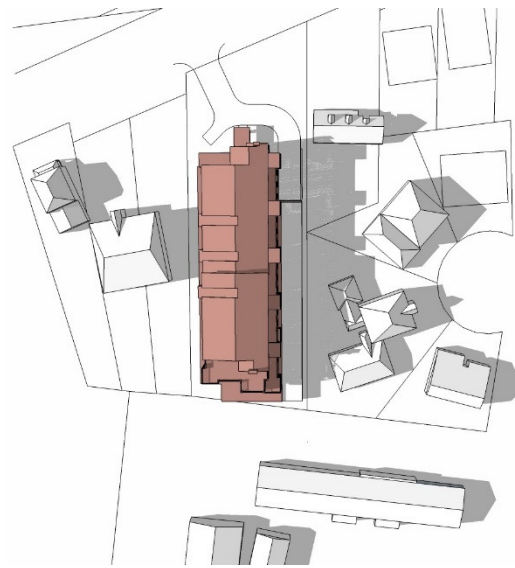
**March 21<sup>st</sup> 12pm**



**March 21<sup>st</sup> 2pm**



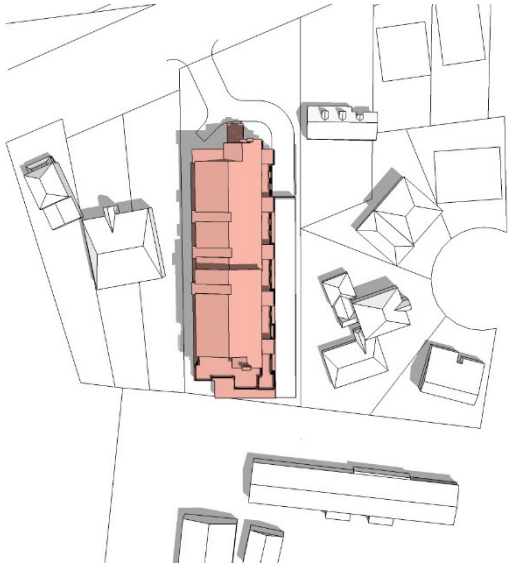
**March 21<sup>st</sup> 4pm**



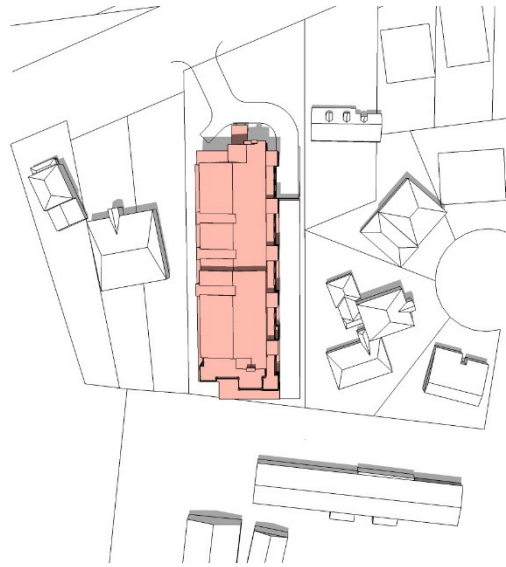
In the spring the proposed development causes relatively minimal impact on the surrounding properties. The adjacent building to the east will be partially shaded at 4pm. The affect is further minimized by the mature tree canopy on these properties.

**Sun Shadow Study - March 21<sup>st</sup>**

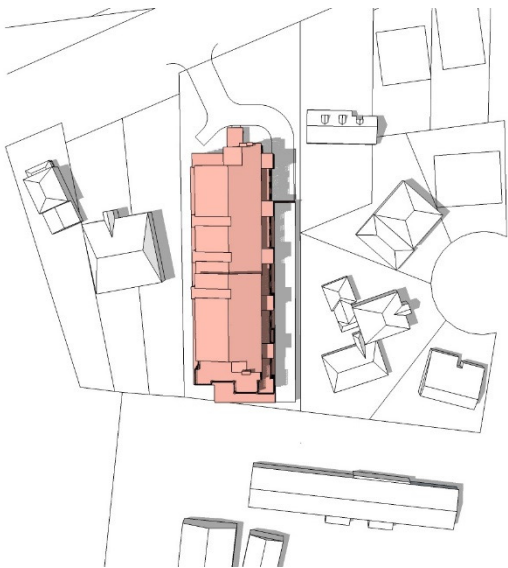
**June 21<sup>st</sup> 10am**



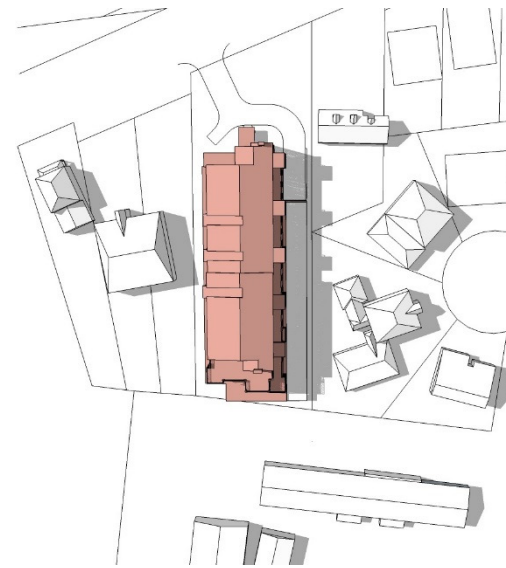
**June 21<sup>st</sup> 12pm**



**June 21<sup>st</sup> 2pm**



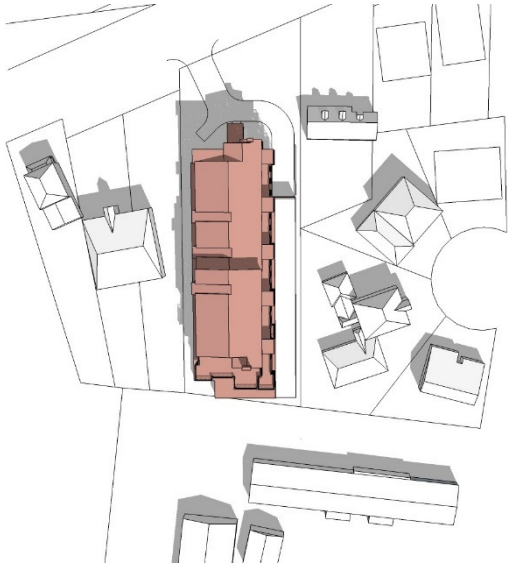
**June 21<sup>st</sup> 4pm**



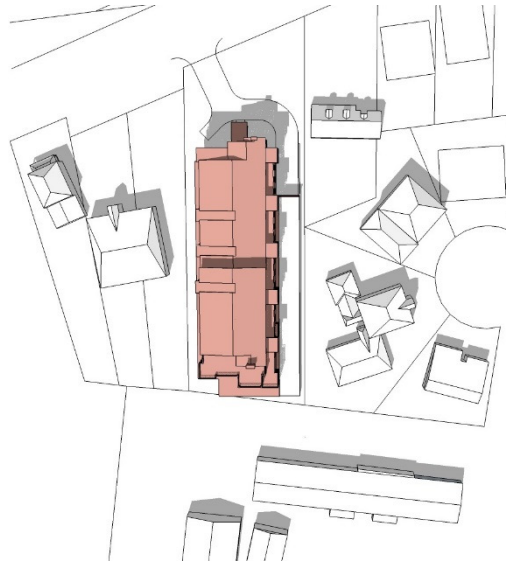
In the summer the proposed development causes minimal impact on the surrounding properties. The adjacent properties to the east will be partially shaded at 4pm. The affect is further minimized by the mature tree canopy on these properties.

**Sun Shadow Study - June 21<sup>st</sup>**

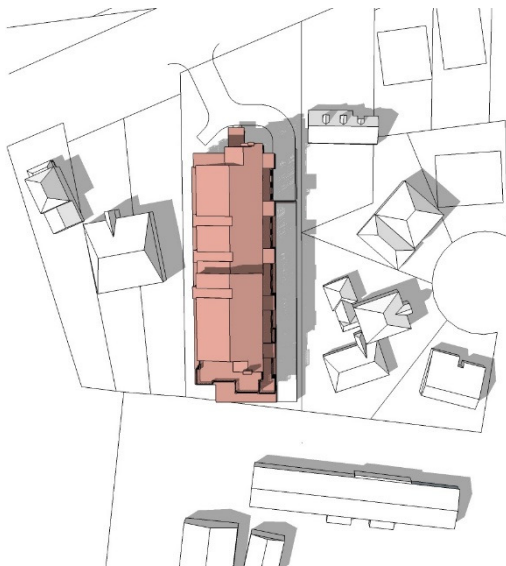
**September 21<sup>st</sup> 10am**



**September 21<sup>st</sup> 12pm**



**September 21<sup>st</sup> 2pm**



**September 21<sup>st</sup> 4pm**



In the fall the proposed development causes relatively minimal impact on the surrounding properties. The adjacent building to the east will be partially shaded at 4pm. The affect is further minimized by the mature tree canopy on these properties. The shadows cast in the fall are similar to those cast in the spring.

**Sun Shadow Study - September 21<sup>st</sup>**

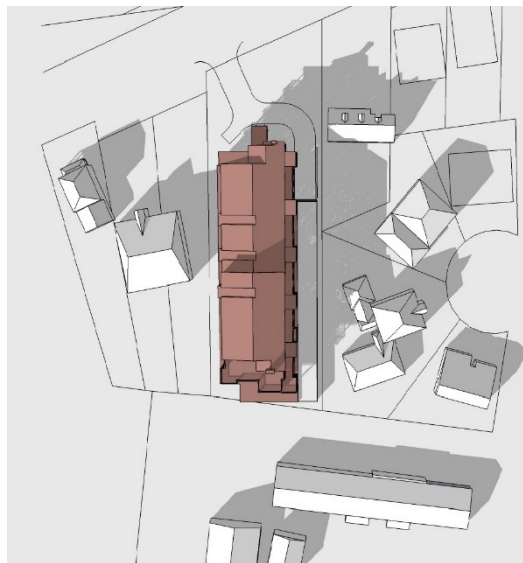
**December 21<sup>st</sup> 10am**



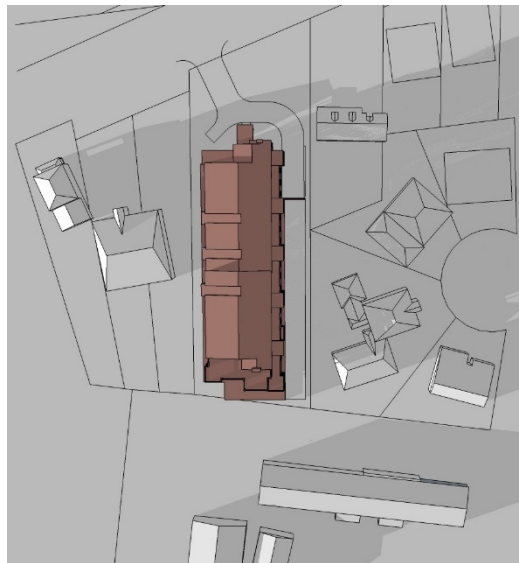
**December 21<sup>st</sup> 12pm**



**December 21<sup>st</sup> 2pm**



**December 21<sup>st</sup> 4pm**



In the winter the proposed development causes relatively minimal impact on the surrounding properties, and causes similar shadows to other buildings within the surrounding area. The buildings east of the proposed development will be shaded by the proposed development after 2pm.

**Sun Shadow Study - December 21<sup>st</sup>**