

# ARCHEOWORKS INC.

Stage 1-2 Archaeological Assessment for the  
Proposed Residential Development of  
80 Marion Street and 3306 Homestead Drive  
Within Part of Lot 5, Concession 5  
Geographic Township of Glanford  
Former County of Wentworth  
City of Hamilton  
Ontario

Project #: 283-HA250B-17  
Licensee (#): Nimal Nithiyantham (P390)  
PIF#: P390-0289-2017

Original Supplementary Document

October 31<sup>st</sup>, 2017

**Presented to:**  
***Branthaven Mount Hope Inc.***  
720 Oval Court  
Burlington, Ontario  
L7L 6A9  
T: 905.333.8364

**Prepared by:**  
***Archeoworks Inc.***  
16715-12 Yonge Street, Suite 1029  
Newmarket, Ontario  
L3X 1X4  
T: 416.676.5597  
F: 647.436.1938

# TABLE OF CONTENTS

**1.0 DETAILED SITE LOCATION INFORMATION ..... 1**

**2.0 DETAILED MAPS..... 5**

**3.0 GPS COORDINATES ..... 9**

**LIST OF TABLES**

TABLE 1 LOCATION INFORMATION FOR ALL SITES..... 1

TABLE 2 H1 (AGGX-758) ..... 1

TABLE 3 H2 ..... 1

TABLE 4 P1 (AGGX-759)..... 1

TABLE 5 P2 (AGGX-760)..... 2

TABLE 6 P3 (AGGX-761)..... 2

TABLE 7 P4 (AGGX-762)..... 2

TABLE 8 P5..... 2

TABLE 9 P6..... 3

TABLE 10 P7..... 3

TABLE 11 P8 (AGGX-763)..... 3

TABLE 12 P9 (AGGX-764)..... 3

TABLE 13 P10 (AGGX-765)..... 3

TABLE 14 P11..... 4

TABLE 15 P12..... 4

TABLE 16 P13..... 4

TABLE 17 P14 (AGGX-766)..... 4

TABLE 18 H1 (AGGX-758) ..... 9

TABLE 19 H2 ..... 9

TABLE 20 P1 (AGGX-759)..... 9

TABLE 21 P2 (AGGX-760)..... 14

TABLE 22 P3 (AGGX-761)..... 15

TABLE 23 P4 (AGGX-762)..... 15

TABLE 24 P5..... 15

TABLE 25 P6..... 15

TABLE 26 P7..... 15

TABLE 27 P8 (AGGX-763)..... 15

TABLE 28 P9 (AGGX-764)..... 16

TABLE 29 P10 (AGGX-765)..... 16

TABLE 30 P11..... 16

TABLE 31 P12..... 16

TABLE 32 P13..... 16

TABLE 33 P14 (AGGX-766)..... 16

## 1.0 DETAILED SITE LOCATION INFORMATION

Table 1 Location Information for all sites

<b>GPS Device</b>	uBlox-7p
<b>Universal Transverse Mercator (UTM) grid zone</b>	17T
<b>Datum</b>	WGS 1984 CSRS
<b>Method of Correction</b>	SBAS Method of Correction with PPP
<b>Accuracy</b>	Less than one metre
<b>Fixed reference landmarks</b>	17T 588000.04 4778476.69 (light standard)

Table 2 H1 (AgGx-758)

<b>Description of Location</b>	Approximately 310m west from c/l of Marion Street and approximately 250m north from the c/l of Aberdeen Avenue.
<b>Size of Site</b>	Roughly measures 33 metres long (N-S) and 20 metres wide (E-W).
<b>Recorded GPS Coordinate(s)</b>	N – 17T 4778644.40 4778649.22 E – 17T 587710.52 4778635.48 S – 17T 587693.19 4778617.42 W – 17T 587690.95 4778629.17 Centre – 17T 587705.85 4778644.40
<b>Recommendations</b>	No further work is recommended for this site.

Table 3 H2

<b>Description of Location</b>	Approximately 390m south from c/l of Airport Road and approximately 520m west from the c/l of Homestead Drive.
<b>Size of Site</b>	Roughly measures eight metres long (N-S) and six metres wide (E-W).
<b>Recorded GPS Coordinate(s)</b>	N – 17T 587649.43 4778542.20 E – 17T 587651.22 4778537.12 S – 17T 587648.20 4778534.24 W – 17T 587645.39 4778537.68 Centre – 17T 587648.31 4778537.35
<b>Recommendations</b>	No further work is recommended for this site.

Table 4 P1 (AgGx-759)

<b>Description of Location</b>	Approximately 336m west from intersection of Marion Street and Longview Court and approximately 220m north from the c/l of Aberdeen Avenue.
<b>Size of Site</b>	Roughly measures 105 metres long (NE-SW) and 40 metres wide (NW-SE).
<b>Recorded GPS Coordinate(s)</b>	N – 17T 587701.36 4778649.92 E – 17T 587699.27 4778599.38 S – 17T 587662.37 4778555.80 W – 17T 587668.06 4778625.99 Centre – 17T 587693.27 4778620.77
<b>Recommendations</b>	Stage 3 AA is recommended for this site.

Table 5 P2 (AgGx-760)

<b>Description of Location</b>	Approximately 336m west from intersection of Marion Street and Longview Court and approximately 220m north from the c/l of Aberdeen Avenue.
<b>Size of Site</b>	Roughly measures 33 metres long (NW-SE) and 14 metres wide (NE-SW).
<b>Recorded GPS Coordinate(s)</b>	N – 17T 587646.34 4778669.69 E – 17T 587665.87 4778650.83 S – 17T 587646.21 4778646.83 W – 17T 587631.94 4778663.55 Centre – 17T 587649.48 4778657.58
<b>Recommendations</b>	No further work is recommended for this site.

Table 6 P3 (AgGx-761)

<b>Description of Location</b>	Approximately 362m west from c/l of Marion Street and approximately 244m north from the c/l of Aberdeen Avenue.
<b>Size of Site</b>	Roughly measures 78 metres long (NE-SW) and 10 metres wide (NW-SE).
<b>Recorded GPS Coordinate(s)</b>	N – 17T 587609.17 4778623.56 E – 17T 587602.53 4778576.23 S – 17T 587583.98 4778547.98 W – 17T 587588.39 4778586.37 Centre – 17T 587593.51 4778578.43
<b>Recommendations</b>	No further work is recommended for this site.

Table 7 P4 (AgGx-762)

<b>Description of Location</b>	Approximately 413m west from c/l of Marion Street and approximately 229m north from the c/l of Strathearne Place.
<b>Size of Site</b>	Roughly measures 42 metres long (N-S) and 18 metres wide (E-W).
<b>Recorded GPS Coordinate(s)</b>	N – 17T 587613.78 4778559.67 E – 17T 587625.85 4778532.77 S – 17T 587613.22 4778516.25 W – 17T 587603.36 4778538.11 Centre – 17T 587614.80 4778534.31
<b>Recommendations</b>	No further work is recommended for this site.

Table 8 P5

<b>Description of Location</b>	Approximately 98m north from c/l of Aberdeen Avenue and approximately 313m west from the c/l of Marion Street.
<b>Size of Site</b>	The artifact scatter is spread over a linear area roughly measures 23 metres long (NW-SE).
<b>Recorded GPS Coordinate(s)</b>	N – 17T 587704.49 4778503.07 E – 17T 587713.06 4778493.75 S – 17T 587701.55 4778485.17 W – 17T 587695.89 4778494.06 Centre – 17T 587702.57 4778494.49
<b>Recommendations</b>	No further work is recommended for this site.

Table 9 P6

<b>Description of Location</b>	Approximately 118m north from c/l of Aberdeen Avenue and approximately 270m west from the c/l of Marion Street.
<b>Size of Site</b>	Findspot
<b>Recorded GPS Coordinate(s)</b>	Centre – (REC20 FS01) 17T 587748 4778501.1
<b>Recommendations</b>	No further work is recommended for this site.

Table 10 P7

<b>Description of Location</b>	Approximately 98m north from c/l of Aberdeen Avenue and approximately 268m west from the c/l of Marion Street.
<b>Size of Site</b>	The artifacts (n=2) were spread nine metres apart.
<b>Recorded GPS Coordinate(s)</b>	Centre – 17T 587742.94 4778482.62
<b>Recommendations</b>	No further work is recommended for this site.

Table 11 P8 (AgGx-763)

<b>Description of Location</b>	Approximately 340m west from c/l of Marion Street and approximately 80m north from the c/l of Aberdeen Avenue.
<b>Size of Site</b>	Roughly measures 47 metres long (NE-SW) and seven metres wide (NW-SE).
<b>Recorded GPS Coordinate(s)</b>	N – 17T 587758.01 4778468.18 E – 17T 587780.76 4778464.57 S – 17T 587767.2 4778456.89 W – 17T 587733.94 4778455.02 Centre – 17T 587758.28 4778460.45
<b>Recommendations</b>	No further work is recommended for this site.

Table 12 P9 (AgGx-764)

<b>Description of Location</b>	Approximately 190m west from c/l of Marion Street and approximately 114m north from the c/l of Aberdeen Avenue.
<b>Size of Site</b>	Roughly measures nine metres long (N-S) and seven metres wide (E-W).
<b>Recorded GPS Coordinate(s)</b>	N – 17T 587814.42 4778482.94 E – 17T 587819.27 4778478.08 S – 17T 587814.52 4778474.11 W – 17T 587810.44 4778479.51 Centre – 17T 587814.73 4778478.67
<b>Recommendations</b>	No further work is recommended for this site.

Table 13 P10 (AgGx-765)

<b>Description of Location</b>	Approximately 220m west from the intersection of Marion Street and Spitfire Drive, and approximately 149m north from the c/l of Aberdeen Avenue.
<b>Size of Site</b>	Roughly measures 14 metres long (N-S) and eight metres wide (E-W).
<b>Recorded GPS Coordinate(s)</b>	N – 17T 587802.24 4778522.24 E – 17T 587808.62 4778514.49 S – 17T 587802.96 4778507.78 W – 17T 587797.38 4778515.14

STAGE 1-2 AA FOR THE PROPOSED DEVELOPMENT OF 80 MARION STREET AND 3306 HOMESTEAD DRIVE  
CITY OF HAMILTON, ONTARIO

	Centre – 17T 587802.53 4778515.89
<b>Recommendations</b>	No further work is recommended for this site.

Table 14 P11

<b>Description of Location</b>	Approximately 107m north from c/l of Aberdeen Avenue and approximately 295m west from the c/l of Homestead Drive.
<b>Size of Site</b>	The artifacts (n=2) were spread six metres apart
<b>Recorded GPS Coordinate(s)</b>	Centre – 17T 587855.16 4778456.62
<b>Recommendations</b>	No further work is recommended for this site.

Table 15 P12

<b>Description of Location</b>	Approximately 160m north from c/l of Aberdeen Avenue and approximately 132m west from the c/l of Marion Street.
<b>Size of Site</b>	Findspot
<b>Recorded GPS Coordinate(s)</b>	Centre – (REC31 FS01) 17T 587885.6 4778500.8
<b>Recommendations</b>	No further work is recommended for this site.

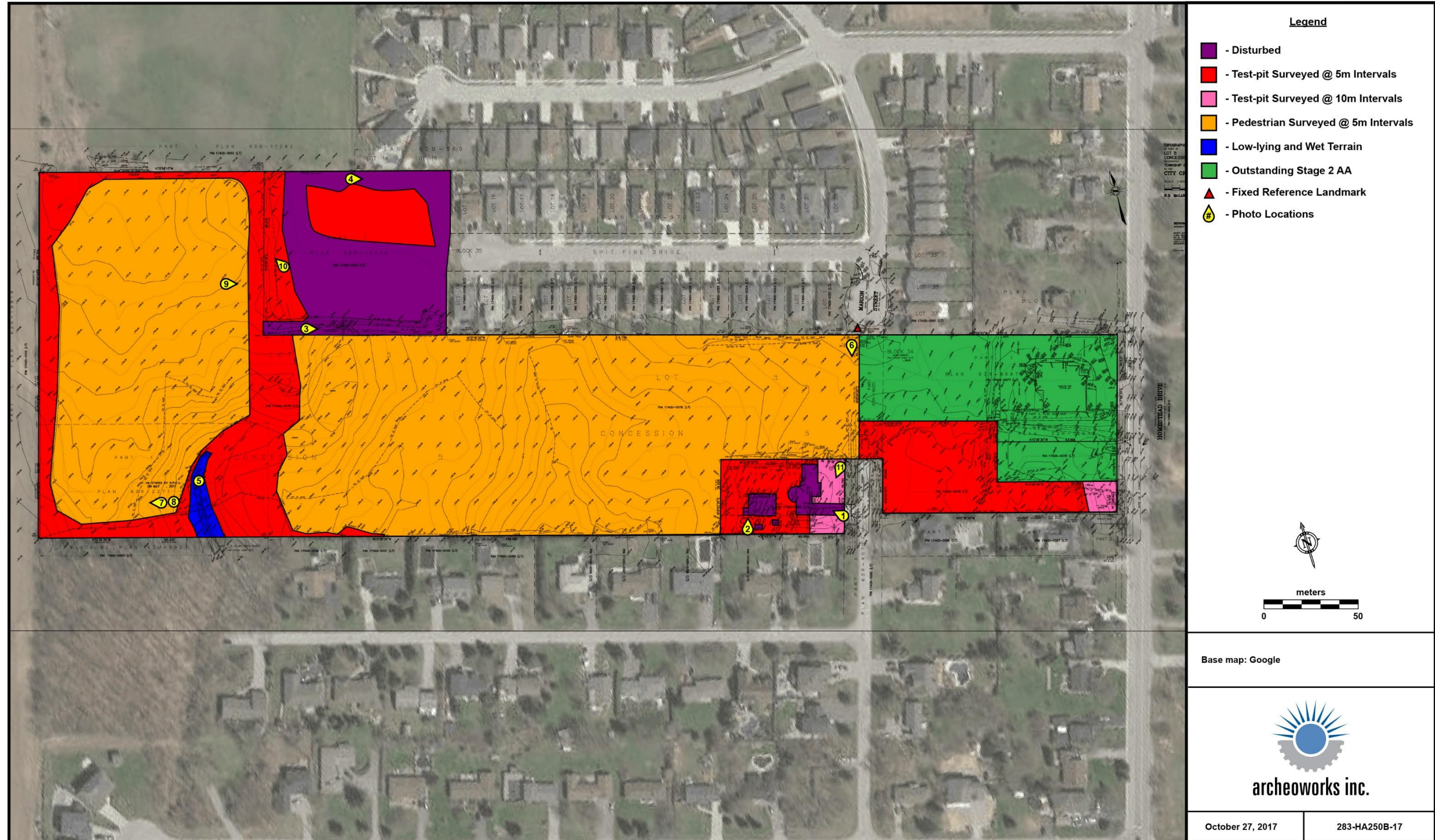
Table 16 P13

<b>Description of Location</b>	Approximately 165m north from c/l of Aberdeen Avenue and approximately 101m west from the c/l of Marion Street.
<b>Size of Site</b>	Findspot
<b>Recorded GPS Coordinate(s)</b>	Centre – (REC32 FS01) 17T 587910.2 4778492.4
<b>Recommendations</b>	No further work is recommended for this site.

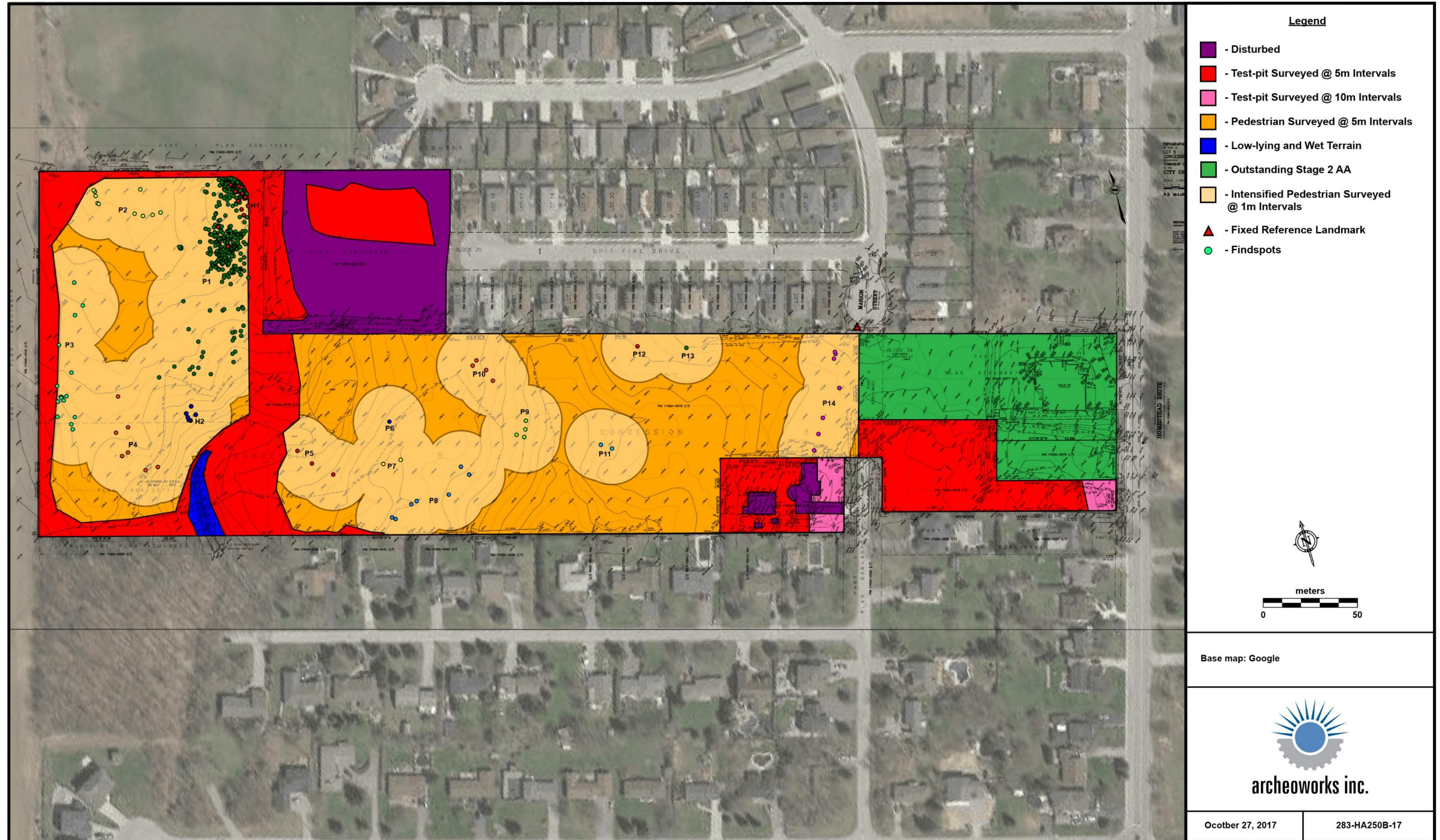
Table 17 P14 (AgGx-766)

<b>Description of Location</b>	Approximately 165m west from the c/l of Homestead Drive, and approximately 72m south from the c/l of Spitfire Drive.
<b>Size of Site</b>	The artifact scatter is spread over a linear area roughly measures 54 metres long (NE-SW)
<b>Recorded GPS Coordinate(s)</b>	N – 17T 587985.38 4778472.02 E – 17T 587984.06 4778447.96 S – 17T 587960.59 4778422.49 W – 17T 587970.91 4778447.79 Centre – 17T 587982.90 4778450.85
<b>Recommendations</b>	No further work is recommended for this site.

## 2.0 DETAILED MAPS

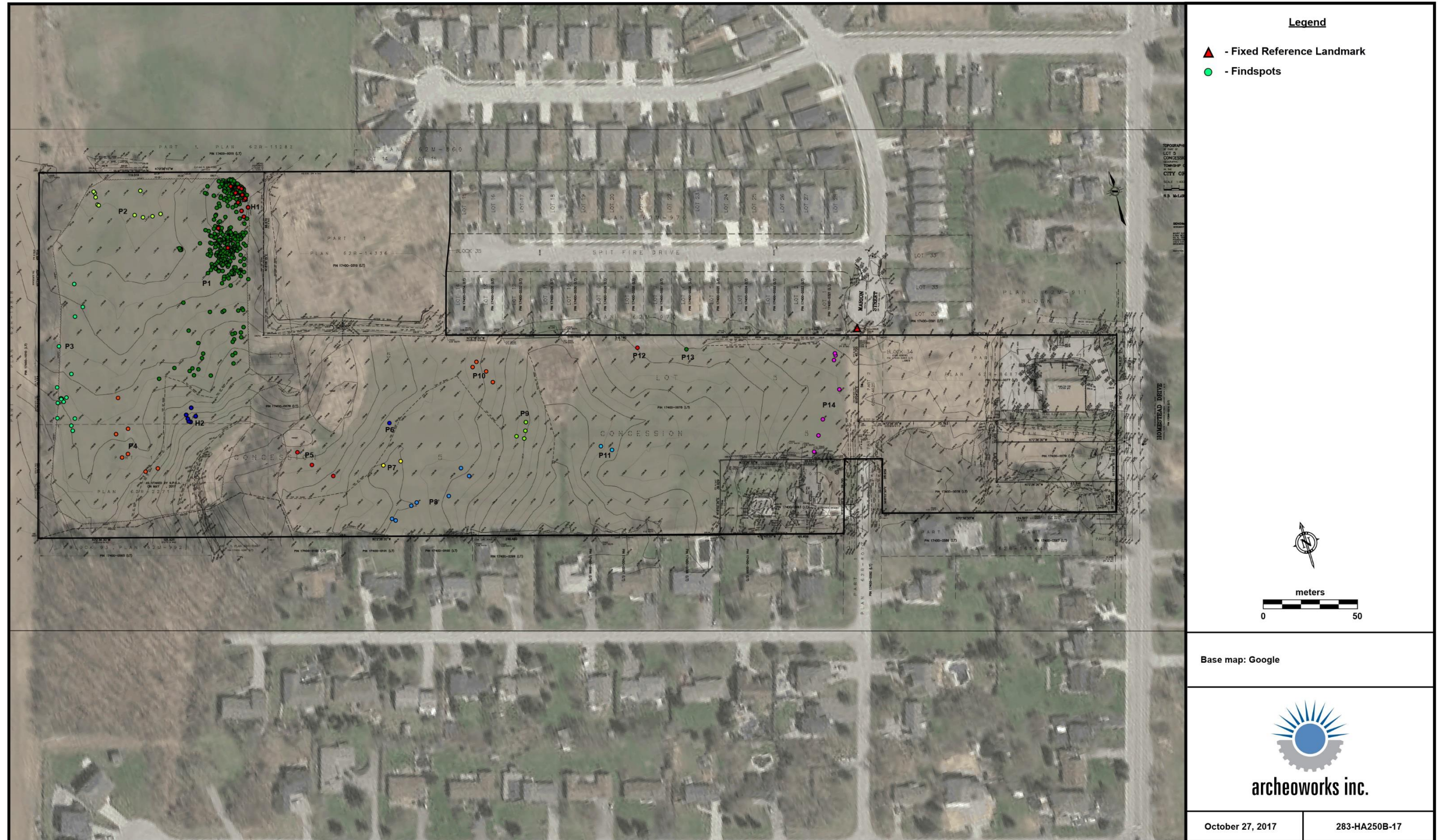


Map S1 Stage 1-2 AA results with image locations indicated.



Map S2 Stage 1-2 AA results with findspots indicated.





Map S3 Findspots illustrated within a 2017 satellite image (Google Earth, 2017c) and topographic survey.



Map S4 Findspots illustrated on topographic survey.

## 3.0 GPS COORDINATES

Table 18 H1 (AgGx-758)

Findspot	GPS
H1 FS1	17T 587693.3 4778615
H1 FS2	17T 587691.5 4778626.5
H1 FS3	17T 587706.2 4778628.3
H1 FS4	17T 587709.8 4778632.5
H1 FS5	17T 587705.9 4778631.7
H1 FS6	17T 587705.6 4778636.6
H1 FS7	17T 587709.1 4778637

Findspot	GPS
H1 FS8	17T 587709.9 4778637.6
H1 FS9	17T 587708.9 4778639.9
H1 FS10	17T 587705.7 4778641.9
H1 FS11	17T 587708.3 4778644.2
H1 FS12	17T 587709.5 4778643.1
H1 FS13	17T 587704.3 4778646

Table 19 H2

Findspot	GPS
H2 FS1	17T 587650.8 4778534.6
H2 FS2	17T 587647.4 4778532.5
H2 FS3	17T 587646.5 4778533

Findspot	GPS
H2 FS4	17T 587646.5 4778534.5
H2 FS5	17T 587646.2 4778536.7
H2 FS6	17T 587649.9 4778539.5

Table 20 P1 (AgGx-759)

Record	Findspot	GPS
1	1	17T 587692.5 4778649.4
1	2	17T 587690.2 4778646.4
1	3	17T 587690.9 4778645.8
1	4	17T 587699 4778650.2
1	6	17T 587698.6 4778647.2
1	7	17T 587700 4778647.7
1	8	17T 587700.1 4778648.5
1	9	17T 587700.4 4778649.2
1	10	17T 587701.4 4778649.9
1	11	17T 587700.9 4778648.2
1	12	17T 587700.4 4778647.2
1	13	17T 587700.8 4778645.6
1	14	17T 587702.4 4778648.7
1	15	17T 587702.6 4778648.9
1	16	17T 587702.4 4778648.1
1	17	17T 587702.8 4778647.9
1	18	17T 587703 4778647.3
1	19	17T 587704.2 4778649.1
1	20	17T 587704.5 4778648.2
1	21	17T 587703.7 4778647.6
1	21	17T 587703.7 4778647.6
1	22	17T 587704.2 4778647.5

Record	Findspot	GPS
1	23	17T 587705 4778649.5
1	24	17T 587705.5 4778648.8
1	25	17T 587706.2 4778649
1	26	17T 587705.1 4778648
1	27	17T 587705.3 4778648.1
1	29	17T 587705.8 4778647.7
1	30	17T 587705.8 4778646.9
1	31	17T 587704.6 4778647.2
1	32	17T 587704.4 4778646.8
1	33	17T 587704 4778647.1
1	34	17T 587703.7 4778646.8
1	37	17T 587703.76 4778645.97
1	38	17T 587703 4778645.2
1	39	17T 587700.4 4778644.1
1	40	17T 587701.3 4778643.6
1	41	17T 587701.2 4778643.2
1	42	17T 587702.8 4778644
1	43	17T 587702.2 4778647
1	44	17T 587703.3 4778644.1
1	45	17T 587703.8 4778645.1
1	47	17T 587704.8 4778645.2
1	48	17T 587704.5 4778644.5

**STAGE 1-2 AA FOR THE PROPOSED DEVELOPMENT OF 80 MARION STREET AND 3306 HOMESTEAD DRIVE  
CITY OF HAMILTON, ONTARIO**

Record	Findspot	GPS
1	49	17T 587704.2 4778646.4
1	51	17T 587704.5 4778649.3
1	54	17T 587700.2 4778644.6
1	55	17T 587701.8 4778641.2
1	56	17T 587703.7 4778641.8
1	59	17T 587704.5 4778643.7
1	60	17T 587705.3 4778643.8
1	61	17T 587705.6 4778644.2
1	62	17T 587705.9 4778644.7
1	63	17T 587706 4778645
1	66	17T 587706.3 4778645.1
1	67	17T 587706.3 4778645.9
1	68	17T 587706.7 4778645.6
1	69	17T 587706.7 4778645.7
1	70	17T 587707.1 4778645.5
1	71	17T 587707.1 4778646.6
1	72	17T 587707.3 4778646.5
1	73	17T 587706.8 4778648
1	74	17T 587707.8 4778645.8
1	75	17T 587707.8 4778646.2
1	76	17T 587708.3 4778645.5
1	77	17T 587708.1 4778645.1
1	78	17T 587708.1 4778645.1
1	79	17T 587707.9 4778645
1	80	17T 587708.6 4778644.9
1	81	17T 587707.1 4778644.8
1	82	17T 587707.4 4778644.5
1	83	17T 587707.2 4778643.9
1	84	17T 587706.8 4778644.2
1	85	17T 587706.6 4778644.2
1	86	17T 587707.1 4778643.7
1	87	17T 587707.2 4778642.9
1	88	17T 587707.5 4778642.7
1	89	17T 587707 4778642.2
1	90	17T 587707.3 4778642.2
1	91	17T 587706.1 4778643.1
1	92	17T 587706.2 4778642.3
1	93	17T 587705.5 4778642.6
1	94	17T 587706.5 4778641.3
1	95	17T 587707 4778642.3

Record	Findspot	GPS
1	96	17T 587707.1 4778642.3
1	97	17T 587706.4 4778642.7
1	98	17T 587705.1 4778642.4
1	98	17T 587705.1 4778642.4
1	99	17T 587705.2 4778641.3
1	101	17T 587706.9 4778641.1
1	102	17T 587707.6 4778641.4
1	103	17T 587707.9 4778641.2
1	104	17T 587708.1 4778641.3
1	105	17T 587708.4 4778640.4
1	107	17T 587709.1 4778640.8
1	108	17T 587709.8 4778640.9
1	109	17T 587710.1 4778640.5
1	110	17T 587710.1 4778641.3
1	111	17T 587710.5 4778642.3
1	112	17T 587710 4778643.1
1	113	17T 587709.4 4778642.6
1	115	17T 587709.7 4778643.8
1	116	17T 587709.1 4778644.4
1	117	17T 587707.9 4778643.8
1	118	17T 587708.2 4778646
1	119	17T 587707.5 4778643.1
1	120	17T 587708.5 4778643.5
1	121	17T 587708.6 4778643.9
1	124	17T 587708.6 4778642.4
1	126	17T 587708.2 4778641.5
1	127	17T 587710.1 4778639.9
1	128	17T 587709.3 4778639.6
1	129	17T 587711.1 4778638.8
1	130	17T 587708.2 4778639.2
1	131	17T 587708.2 4778638.8
1	132	17T 587707.2 4778638.2
1	133	17T 587706.3 4778638.2
1	134	17T 587705.5 4778638.1
1	135	17T 587705.2 4778638.3
1	136	17T 587703.9 4778639.7
1	137	17T 587706.2 4778637
1	138	17T 587709.6 4778636.6
1	139	17T 587710 4778637.2
1	141	17T 587706.1 4778635.4

**STAGE 1-2 AA FOR THE PROPOSED DEVELOPMENT OF 80 MARION STREET AND 3306 HOMESTEAD DRIVE  
CITY OF HAMILTON, ONTARIO**

Record	Findspot	GPS
1	142	17T 587704.2 4778635.7
1	143	17T 587704 4778635.2
1	144	17T 587702 4778634.8
1	145	17T 587709.2 4778638.5
1	146	17T 587700.1 4778638.7
1	147	17T 587699.8 4778640.6
1	148	17T 587701.8 4778639.4
1	149	17T 587698.8 4778640.1
1	150	17T 587697.8 4778642.2
1	151	17T 587697.4 4778641.5
1	152	17T 587694.3 4778643.7
1	153	17T 587695.6 4778638.9
1	154	17T 587695.6 4778637.4
1	155	17T 587693.9 4778637.1
1	156	17T 587699.9 4778636.3
1	157	17T 587703.2 4778631.9
1	158	17T 587703.9 4778628.1
1	158	17T 587703.9 4778628.1
1	159	17T 587707.5 4778626.9
1	160	17T 587705.4 4778624.7
1	162	17T 587704.7 4778620
1	163	17T 587696.8 4778631.1
1	164	17T 587692.4 4778633.6
1	165	17T 587692 4778633.2
1	166	17T 587690.6 4778631.5
1	167	17T 587690.2 4778628
1	168	17T 587692.5 4778629.4
1	169	17T 587693.4 4778629.7
1	170	17T 587691.7 4778627.1
1	171	17T 587692.1 4778626.9
1	172	17T 587691.5 4778626.7
1	173	17T 587691.5 4778626.4
1	174	17T 587691.7 4778626.2
1	175	17T 587692 4778625.5
1	176	17T 587693.3 4778626
1	177	17T 587692.3 4778624.4
1	177	17T 587692.3 4778624.4
1	178	17T 587692.3 4778623.6
1	179	17T 587692.1 4778623.7
1	180	17T 587695.3 4778622.8

Record	Findspot	GPS
1	181	17T 587692.8 4778622.5
1	182	17T 587693.3 4778620.8
1	183	17T 587696 4778621.4
1	184	17T 587696.3 4778621.3
1	185	17T 587696.4 4778621.6
1	186	17T 587696.3 4778621.9
1	187	17T 587696.7 4778622
1	188	17T 587696.9 4778622.2
1	189	17T 587696.9 4778622.5
1	190	17T 587696.2 4778623
1	191	17T 587696.9 4778623.9
1	192	17T 587697.2 4778624.7
1	193	17T 587697.9 4778624.9
1	194	17T 587697.5 4778621.6
1	195	17T 587697.3 4778620.9
1	196	17T 587697.1 4778622.6
1	197	17T 587698.7 4778620.3
1	198	17T 587699.4 4778621.3
1	199	17T 587703.2 4778620.5
1	200	17T 587703.2 4778618.9
1	200	17T 587703.2 4778618.9
1	201	17T 587701.8 4778617.9
1	202	17T 587701.4 4778618.7
1	203	17T 587701.2 4778619.8
1	204	17T 587701 4778617.5
1	205	17T 587700.5 4778619.4
1	206	17T 587699.9 4778619.4
1	207	17T 587699.6 4778617.6
1	208	17T 587698.8 4778619.9
1	209	17T 587698.3 4778619.6
1	210	17T 587697.8 4778619.3
1	211	17T 587698.3 4778618.3
1	212	17T 587699.2 4778616.5
1	213	17T 587696 4778618.5
1	214	17T 587695.4 4778618.7
1	215	17T 587694.7 4778618.2
1	216	17T 587694.4 4778618.6
1	217	17T 587694.5 4778619.7
1	218	17T 587694.6 4778619.8
1	219	17T 587694.9 4778620.4

**STAGE 1-2 AA FOR THE PROPOSED DEVELOPMENT OF 80 MARION STREET AND 3306 HOMESTEAD DRIVE  
CITY OF HAMILTON, ONTARIO**

Record	Findspot	GPS
1	220	17T 587692.9 4778619.3
1	221	17T 587692.5 4778619.9
1	222	17T 587692.4 4778620.2
1	223	17T 587692.4 4778619.2
1	224	17T 587692.1 4778619.4
1	225	17T 587691.9 4778620
1	226	17T 587692.3 4778620.1
1	227	17T 587691.1 4778620
1	228	17T 587690.7 4778620.6
1	229	17T 587690.7 4778620.3
1	230	17T 587690.1 4778623.3
1	231	17T 587689.2 4778622.7
1	232	17T 587688.9 4778623.9
1	233	17T 587688.8 4778624.2
1	234	17T 587689.1 4778626.8
1	235	17T 587686.2 4778626.5
1	236	17T 587684.7 4778627.5
1	237	17T 587686.3 4778624.1
1	238	17T 587686.2 4778623.8
1	239	17T 587686.7 4778623.5
1	240	17T 587685.1 4778620.3
1	241	17T 587687.7 4778619.1
1	242	17T 587688 4778622.1
1	243	17T 587688.8 4778622.1
1	244	17T 587689.4 4778620.3
1	245	17T 587688.9 4778619.3
1	246	17T 587689.2 4778619.3
1	247	17T 587690 4778620.2
1	248	17T 587689.8 4778618.5
1	250	17T 587688.9 4778618.3
1	251	17T 587688.5 4778619
1	252	17T 587688.1 4778618.6
1	252	17T 587688.1 4778618.6
1	257	17T 587692.4 4778618
1	258	17T 587693.2 4778616.9
1	259	17T 587693.7 4778616.8
1	260	17T 587693.9 4778615.4
1	261	17T 587694.8 4778614.5
1	262	17T 587694.5 4778613.7
1	263	17T 587695.7 4778613.8

Record	Findspot	GPS
1	264	17T 587696.2 4778614.2
1	265	17T 587696.5 4778616.3
1	266	17T 587697.1 4778615
1	267	17T 587696.8 4778614.3
1	268	17T 587696.5 4778613.6
1	269	17T 587696.7 4778613.1
1	270	17T 587697.2 4778612.4
1	271	17T 587697.7 4778612.8
1	272	17T 587697.6 4778612.1
1	273	17T 587698.7 4778613.2
1	274	17T 587698.8 4778613.5
1	275	17T 587698.8 4778614.4
1	276	17T 587698.9 4778615.2
1	277	17T 587699.4 4778612.8
1	278	17T 587695.3 4778612.3
1	279	17T 587695.1 4778612.2
1	280	17T 587694.7 4778611.5
1	281	17T 587694.3 4778612.7
1	282	17T 587694.4 4778613.2
1	282	17T 587694.4 4778613.2
1	283	17T 587693.4 4778613.1
1	284	17T 587693 4778613.3
1	285	17T 587692.3 4778613.4
1	286	17T 587692.6 4778614
1	287	17T 587692.5 4778615.2
1	287	17T 587692.5 4778615.2
1	288	17T 587691.8 4778615.3
1	289	17T 587690.5 4778614.4
1	290	17T 587689.5 4778616.3
1	291	17T 587688.7 4778617.7
1	292	17T 587688.5 4778617.4
1	293	17T 587685.8 4778619.7
1	294	17T 587687.1 4778617.3
1	294	17T 587687.1 4778617.3
1	295	17T 587683.8 4778616.8
1	296	17T 587683.8 4778615.8
1	297	17T 587689.6 4778615.6
1	298	17T 587688.8 4778614.8
1	299	17T 587689.2 4778614.2
1	300	17T 587689.7 4778614

**STAGE 1-2 AA FOR THE PROPOSED DEVELOPMENT OF 80 MARION STREET AND 3306 HOMESTEAD DRIVE  
CITY OF HAMILTON, ONTARIO**

Record	Findspot	GPS
1	300	17T 587689.7 4778614
1	301	17T 587690.5 4778614.1
1	302	17T 587683.9 4778614.6
1	303	17T 587686.3 4778613.6
1	304	17T 587687.1 4778614.3
1	305	17T 587686.4 4778612.9
1	306	17 587686.70 4778612.65
1	307	17T 587687.5 4778612.9
1	308	17T 587687.5 4778612.4
1	309	17T 587687.2 4778611.7
1	310	17T 587687.9 4778612.1
1	311	17T 587688.9 4778613.1
1	312	17T 587688.9 4778611.9
1	313	17T 587689.5 4778611.9
1	314	17T 587690 4778612.2
1	315	17T 587691.4 4778613
1	316	17T 587692.4 4778612.3
1	316	17T 587692.4 4778612.3
1	317	17T 587693.4 4778611.6
1	318	17T 587693.1 4778611.2
1	319	17T 587694.3 4778610.6
1	320	17T 587694.5 4778610.2
1	321	17T 587702 4778614.7
1	322	17T 587702.6 4778613.4
1	324	17T 587698.7 4778609.4
1	325	17T 587700.03 4778607.47
1	326	17T 587697.77 4778606.60
1	327	17T 587694.7 4778609.1
1	327	17T 587694.7 4778609.1
1	328	17T 587693.7 4778609.6
1	330	17T 587691 4778610.7
1	331	17T 587690.1 4778611.2
1	332	17T 587689 4778611.3
1	333	17T 587682.1 4778614.8
1	334	17T 587683 4778613.7
1	335	17T 587687.1 4778610.4
1	336	17T 587688.1 4778610.3
1	337	17T 587689 4778610
1	338	17T 587689.8 4778609.6
1	339	17T 587691.3 4778608.7

Record	Findspot	GPS
1	340	17T 587692.4 4778607.7
1	342	17T 587690.8 4778607.9
1	343	17T 587690.3 4778607.7
1	344	17T 587690.1 4778607.5
1	345	17T 587688.5 4778609.1
1	346	17T 587687.7 4778609.6
1	347	17T 587687.6 4778608.5
1	348	17T 587687.2 4778608.3
1	349	17T 587686.3 4778609.1
1	350	17T 587686.2 4778609.6
1	351	17T 587685 4778608.8
1	352	17T 587683.8 4778608.3
1	353	17T 587682.5 4778609.3
1	354	17T 587682.4 4778607.9
1	355	17T 587682.8 4778607.5
1	356	17T 587683.7 4778606.9
1	357	17T 587684.2 4778606.6
1	358	17T 587683.9 4778606.2
1	359	17T 587684.9 4778605.1
1	360	17T 587685.3 4778604.9
1	361	17T 587685.1 4778604.6
1	362	17T 587687.7 4778606.9
1	363	17T 587688.2 4778607.3
1	364	17T 587690.4 4778605.5
1	365	17T 587690.4 4778606.5
1	366	17T 587691.3 4778606.7
1	367	17T 587691.1 4778606.1
1	368	17T 587693.4 4778604.2
1	369	17T 587694.1 4778603.9
1	370	17T 587696.3 4778601.9
1	371	17T 587698.9 4778603.8
1	372	17T 587697.7 4778600.2
1	373	17T 587695.7 4778601.3
1	374	17T 587695.3 4778601.1
1	375	17T 587695.3 4778601.4
1	376	17T 587695.1 4778601.6
1	377	17T 587695.1 4778600.6
1	377	17T 587695.1 4778600.6
1	378	17T 587694.5 4778601.9
1	378	17T 587694.5 4778601.9

**STAGE 1-2 AA FOR THE PROPOSED DEVELOPMENT OF 80 MARION STREET AND 3306 HOMESTEAD DRIVE  
CITY OF HAMILTON, ONTARIO**

Record	Findspot	GPS
1	379	17T 587692.9 4778602.7
1	379	17T 587692.9 4778602.7
1	380	17T 587692.1 4778602.6
1	381	17T 587691.7 4778602.6
1	382	17T 587692.2 4778601.7
1	383	17T 587692.3 4778600.8
1	384	17T 587691.4 4778600.9
1	385	17T 587691.3 4778601.3
1	386	17T 587691.2 4778601.9
1	387	17T 587689.7 4778601.2
1	388	17T 587688.6 4778600.6
1	389	17T 587689 4778599.4
1	390	17T 587686.9 4778600.9
1	390	17T 587686.9 4778600.9
1	391	17T 587687.1 4778604.1
1	392	17T 587681.3 4778606.4
1	393	17T 587679.3 4778605.3
1	394	17T 587686.5 4778599.7
1	395	17T 587684.8 4778597.9
1	396	17T 587688.9 4778595.5
1	397	17T 587695.5 4778598.6
1	399	17T 587698.8 4778596
2	1	17T 587679.9 4778621.7
3	1	17T 587669.4 4778621.9
3	2	17T 587669.3 4778621.2
3	3	17T 587668.9 4778621.9
3	3	17T 587668.9 4778621.9
3	4	17T 587668.8 4778621.4
3	5	17T 587668.6 4778622.3
15	1	17T 587662.2 4778594.1

Record	Findspot	GPS
16	1	17T 587674.2 4778585.3
16	2	17T 587680.7 4778583.4
16	3	17T 587681.7 4778583.7
16	4	17T 587688.8 4778581.6
16	5	17T 587691.1 4778582
16	6	17T 587691.3 4778581.1
16	7	17T 587688.9 4778572.4
16	8	17T 587686.2 4778567.6
16	9	17T 587686.8 4778570
16	9	17T 587686.8 4778570
16	11	17T 587683.6 4778570.6
16	12	17T 587682.2 4778570.6
16	13	17T 587682.2 4778567.6
16	13	17T 587681.2 4778566.6
17	1	17T 587678.2 4778555.5
17	1	17T 587678.2 4778555.5
17	2	17T 587680.7 4778560.5
17	3	17T 587679 4778559.8
18	1	17T 587664.8 4778552.9
18	2	17T 587659.5 4778558
18	3	17T 587656.6 4778559.3
18	4	17T 587654.8 4778558.5
18	5	17T 587656.3 4778555.6
18	6	17T 587647.5 4778562.3
18	7	17T 587638.1 4778559.2
18	8	17T 587663 4778563.1
18	9	17T 587664.3 4778565.2
18	10	17T 587663.5 4778571.3
18	11	17T 587660.6 4778579.1

Table 21 P2 (AgGx-760)

Record	Findspot	GPS
4	2	17T 587664.4 4778642.7
4	4	17T 587659.9 4778642.7
4	5	17T 587654.9 4778643.7
4	6	17T 587651 4778646.1
5	1	17T 587657.7 4778657.6
6	1	17T 587634.3 4778663.4
6	2	17T 587633.9 4778664.3

Record	Findspot	GPS
6	2	17T 587633.9 4778664.3
6	3	17T 587634 4778661.1
6	4	17T 587633.9 4778657.1
6	4	17T 587633.9 4778657.1
6	5	17T 587634.3 4778656.6
6	5	17T 587634.3 4778656.6



STAGE 1-2 AA FOR THE PROPOSED DEVELOPMENT OF 80 MARION STREET AND 3306 HOMESTEAD DRIVE  
CITY OF HAMILTON, ONTARIO

Table 22 P3 (AgGx-761)

Record	Findspot	GPS
7	1	17T 587609.7 4778620.5
8	1	17T 587610.5 4778607.5
8	2	17T 587605 4778603.8
9	1	17T 587592.3 4778591.2
10	1	17T 587594.3 4778575.3
11	1	17T 587584.99 4778570.66
11	2	17T 587585.27 4778564.55
11	3	17T 587585.00 4778564.00
11	4	17T 587585.25 587585.25

Record	Findspot	GPS
11	5	17T 587586.11 4778562.37
11	6	17T 587588.17 587588.17
11	8	17T 587580.38 4778555.02
11	9	17T 587586.28 4778549.07
11	10	17T 587586.22 4778546.25
11	11	17T 587589.17 4778552.13
11	12	17T 587582.95 4778562.68

Table 23 P4 (AgGx-762)

Record	Findspot	GPS
12	1	17T 587607.6 4778537.8
13	1	17T 587607.1 4778525
13	2	17T 587610.6 4778525.9
13	3	17T 587614.6 4778538.7

Record	Findspot	GPS
14	1	17T 587614.3 4778555.9
19	1	17T 587623.5 4778513.9
19	2	17T 587616.8 4778514.2

Table 24 P5

Record	Findspot	GPS
22	1	17T 587711.4 4778482.9
23	1	17T 587702.2 4778491.8

Record	Findspot	GPS
23	2	17T 587696.8 4778500.5
23	2	17T 587696.8 4778500.5

Table 25 P6

Record	Findspot	GPS
20	1	17T 587748 4778501.1

Table 26 P7

Record	Findspot	GPS
21	1	17T 587747.9 4778479.9
21	2	17T 587738.4 4778480.5

Table 27 P8 (AgGx-763)

Record	Findspot	GPS
24	1	17T 587734.5 4778452
24	2	17T 587736.1 4778450.7
25	1	17T 587746.3 4778455.7
25	2	17T 587749.6 4778456.5

Record	Findspot	GPS
26	1	17T 587766.9 4778454.8
27	1	17T 587777.4 4778467.1
27	2	17T 587780.3 4778461.8

STAGE 1-2 AA FOR THE PROPOSED DEVELOPMENT OF 80 MARION STREET AND 3306 HOMESTEAD DRIVE  
CITY OF HAMILTON, ONTARIO

Table 28 P9 (AgGx-764)

Record	Findspot	GPS
28	1	17T 587814.1 4778472.3
28	2	17T 587815.8 4778476

Record	Findspot	GPS
28	3	17T 587817.4 4778480.3
28	4	17T 587810.5 4778474.6

Table 29 P10 (AgGx-765)

Record	Findspot	GPS
29	1	17T 587806.9 4778505.8
29	2	17T 587799 4778516.5

Record	Findspot	GPS
29	3	17T 587801.7 4778518.6
29	4	17T 587805.1 4778512.2

Table 30 P11

Record	Findspot	GPS
30	1	17T 587851.8 4778456.5
30	2	17T 587856.8 4778452.9

Table 31 P12

Record	Findspot	GPS
31	1	17T 587885.6 4778500.8

Table 32 P13

Record	Findspot	GPS
32	1	17T 587910.2 4778492.4

Table 33 P14 (AgGx-766)

Record	Findspot	GPS
33	1	17T 587959.1 4778420.6
33	2	17T 587963.8 4778428.2
33	4	17T 587968.5 4778435.7
34	1	17T 587981.5 4778448.3
35	1	17T 587984.9 4778466.2
35	1	17T 587984.9 4778466.2
35	2	17T 587984.9 4778467.3
35	2	17T 587984.9 4778467.3
35	3	17T 587983.3 4778464