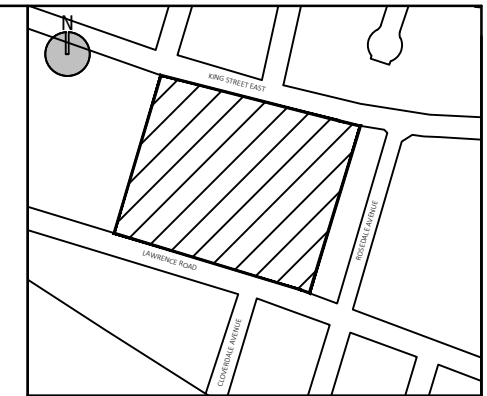
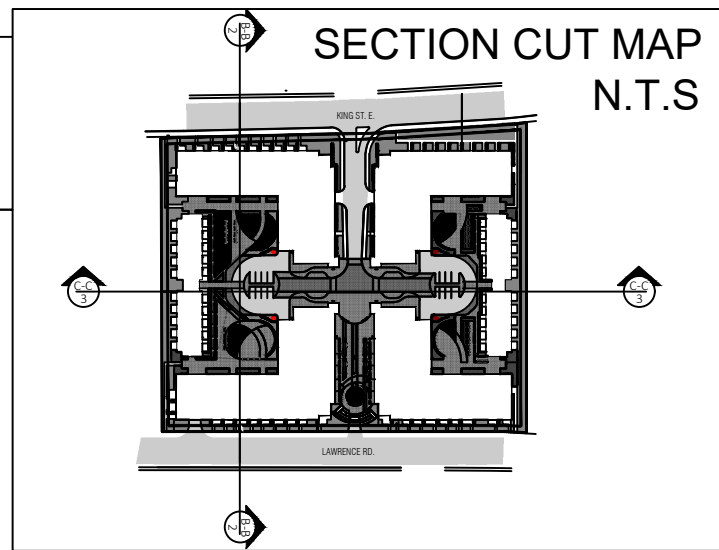
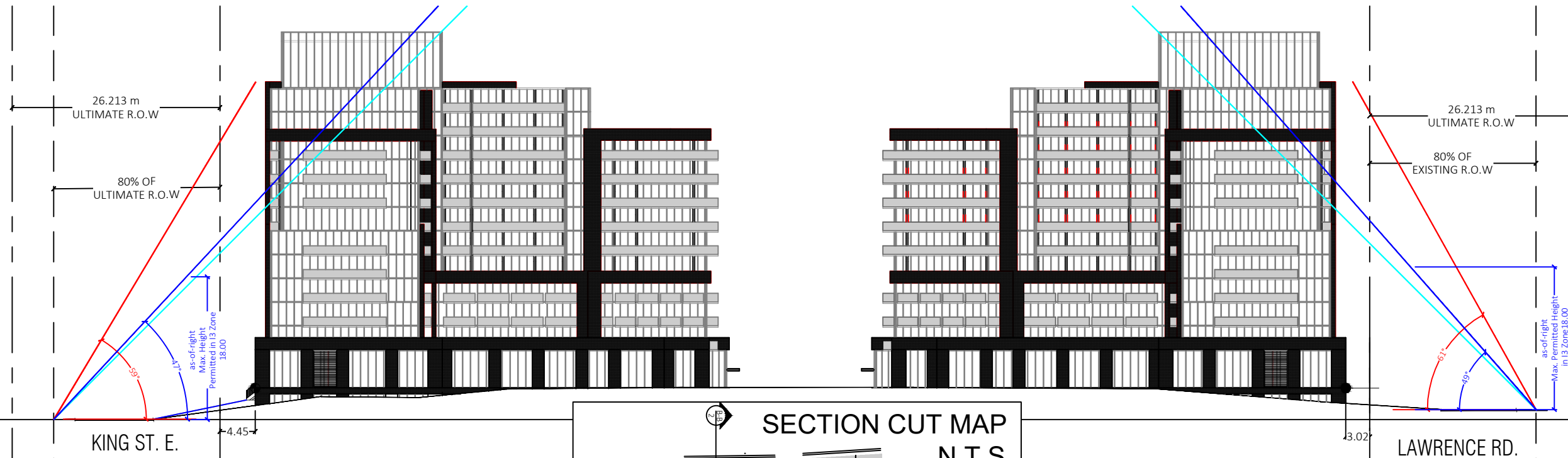


ANGULAR PLANE LOOKING EAST

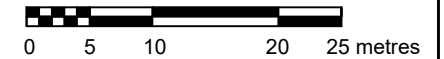


Note: +/- 29.74% of section cut B-B meets the City's 45° angular plane requirement.



KEY MAP - N.T.S.

SCALE 1:600

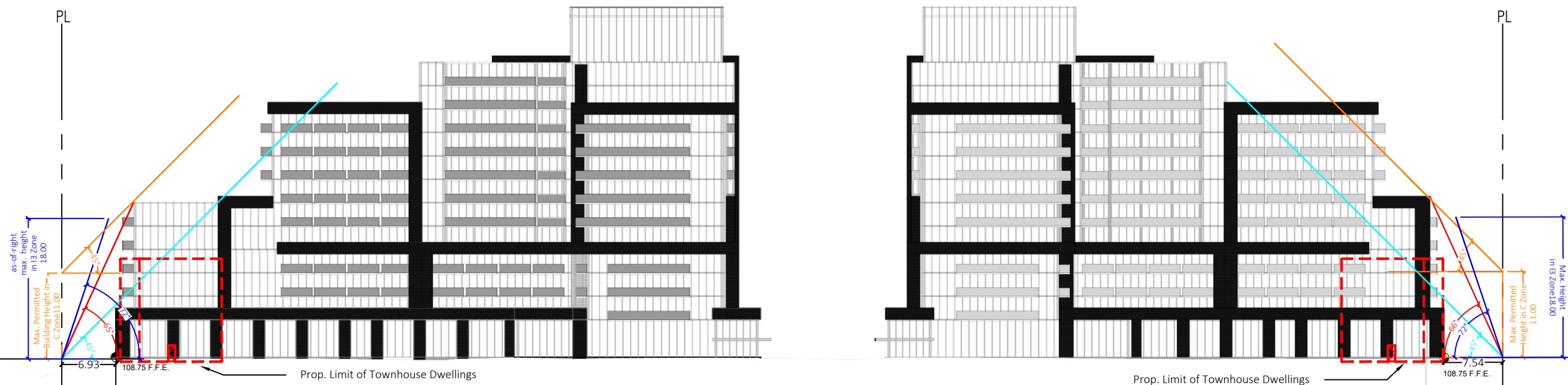


- LEGEND:
- PROPERTY LINE
 - 45° ANGLE FROM 80% OF R.O.W AS PER CITY GUIDELINES
 - PROPOSED ANGULAR PLANE
 - AS-OF-RIGHT ANGULAR PLANE PERMITTED IN I3 ZONE
 - ANGULAR PLANE FROM 11m IN HEIGHT
 - TOWNHOUSE BLOCKS

ANGULAR PLANE LOOKING NORTH



Note: +/- 36.78% of section cut C-C meets the City's 45° angular plane requirement.



NOT FOR CONSTRUCTION
ISSUED FOR REVIEW & COMMENTS ONLY

NOTES:
ALL DIMENSIONS SHOWN ON THIS PLAN ARE IN METRES AND CAN BE CONVERTED TO FEET BY DIVIDING BY 0.3048.

DESIGN BY: S. MCKAY CHECKED BY: M. JOHNSTON
DRAWN BY: L. DRENNAN DATE: SEPTEMBER 29, 2021

PLANNING & LAND DEVELOPMENT

3 STUDEBAKER PLACE, UNIT 1
HAMILTON, ON L8L 0C8
905-546-1087 - urbansolutions.info

PROJECT:
1842 KING STREET EAST
CITY OF HAMILTON

CLIENT:
1842 KING ST.E. INC.
C/O NEW HORIZON DEVELOPMENT GROUP

TITLE: **ANGULAR PLANE SKETCH**

U/S FILE NUMBER: 368-20 SHEET NUMBER: 1