

date	issued
2018.10.16	ISSUED FOR ZONING APPROVAL
2019.08.13	ISSUED FOR

**PRELIMINARY**  
DATE: October 14, 2021  
NOT TO BE USED FOR CONSTRUCTION

date	revision	no.
------	----------	-----

customer  
**VALERY HOMES**

2140 KING ST. E, HAMILTON, ON

project  
**154 WILSON ST. EAST DEVELOPMENT**  
154 WILSON ST. E, ANCASTER, ON

title  
**PRELIMINARY GRADING PLAN**

**WALTERFEDY**

675 Queen Street South, Suite 111  
Kitchener, Ontario, Canada N2M 1A1  
T 519.576.2150 F 519.576.5499  
walterfedy.com

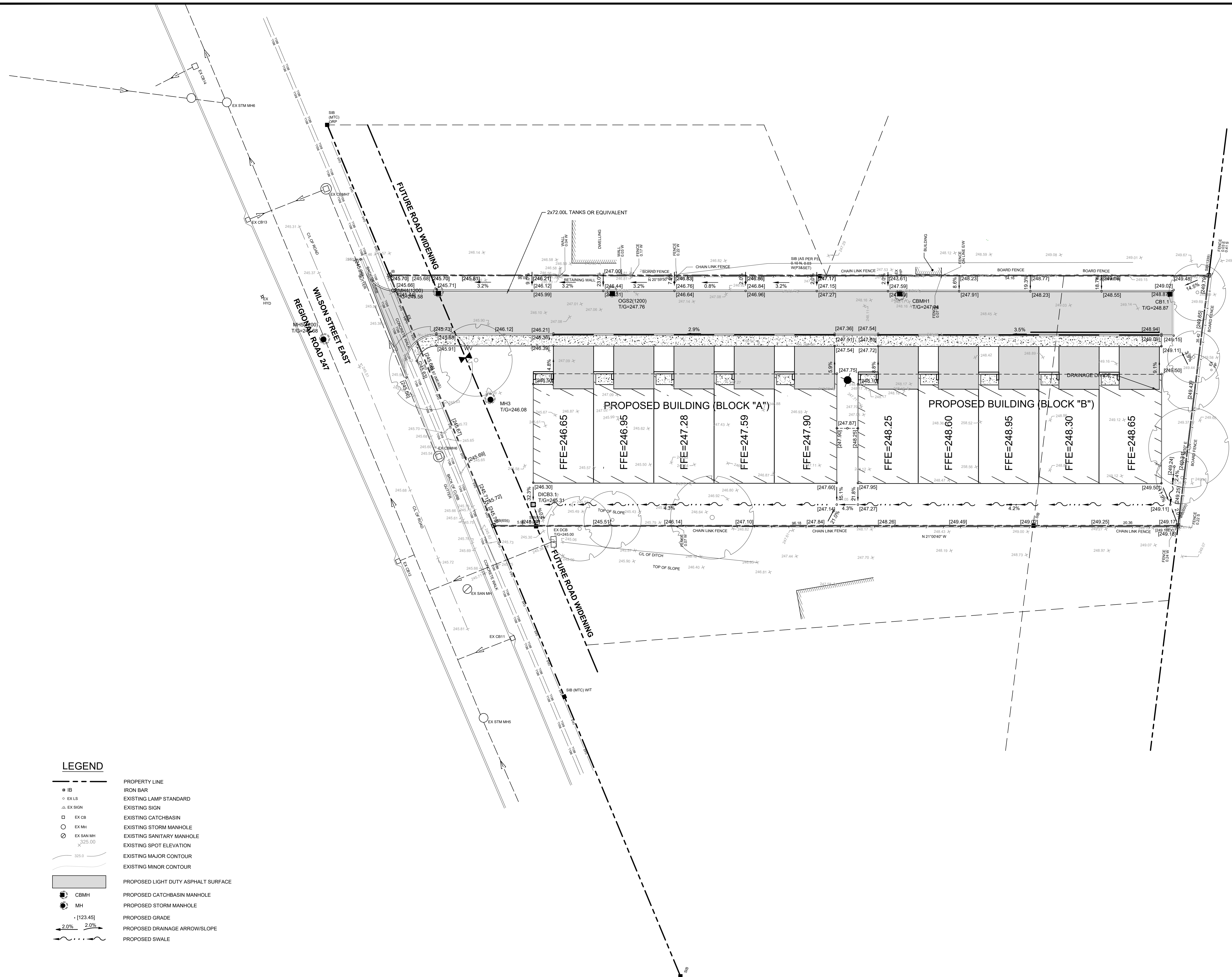


The contractor shall check and verify all dimensions and report any errors or omissions to the consultant before commencing or proceeding with any work. Do not scale this drawing.

Copyright © 2018 WalterFedy

scale:	1:250	sheet no.:	
date:	2018.09.11		
job no.:	2018-0336-10		
CAD file:	2018-0336-10_GRO_PLT		
drawn by:			
checked by:			

**C2-1**



**LEGEND**

- |   |  |
|---|--|
| <ul style="list-style-type: none"> <li>▬ PROPERTY LINE</li> <li>— IRON BAR</li> <li>○ EX. LAMP STANDARD</li> <li>△ EX. SIGN</li> <li>□ EX. CB</li> <li>○ EX. MH</li> <li>○ EX. SAN. MH</li> <li>— 325.00</li> <li>— EXISTING MAJOR CONTOUR</li> <li>— EXISTING MINOR CONTOUR</li> <li>▬ PROPOSED LIGHT DUTY ASPHALT SURFACE</li> <li>● CBMH</li> <li>● MH</li> <li>— (123.45)</li> <li>→ 2.0%</li> <li>— PROPOSED DRAINAGE ARROW/SLOPE</li> <li>— PROPOSED SWALE</li> </ul> | <ul style="list-style-type: none"> <li>PROPOSED CATCHBASIN MANHOLE</li> <li>PROPOSED STORM MANHOLE</li> <li>PROPOSED GRADE</li> <li>PROPOSED DRAINAGE ARROW/SLOPE</li> <li>PROPOSED SWALE</li> </ul> |
|---|--|