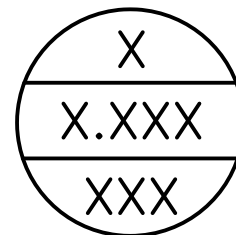
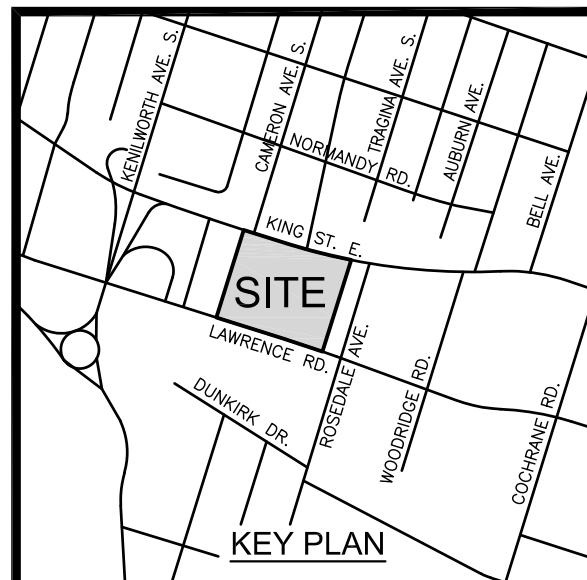
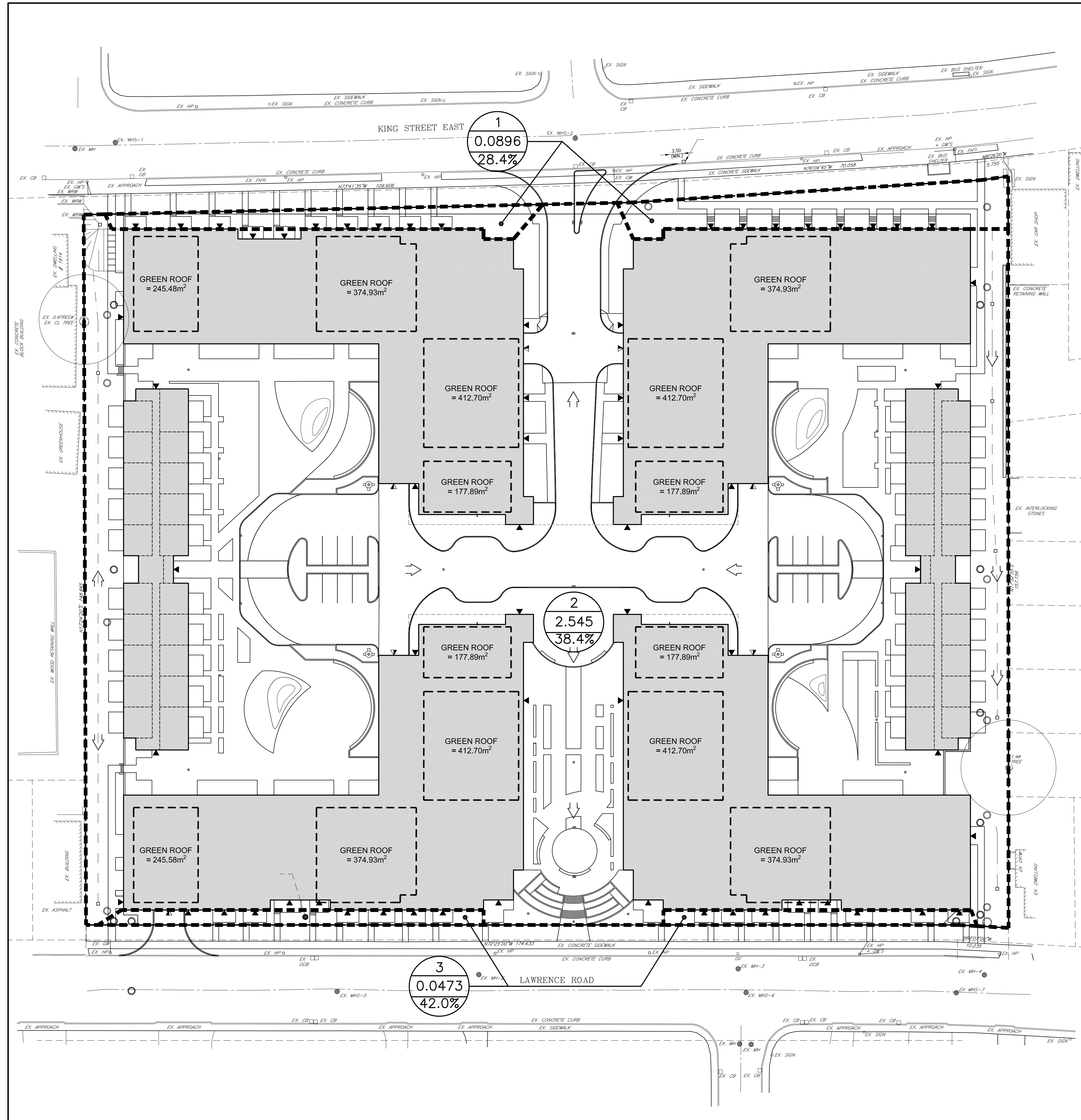
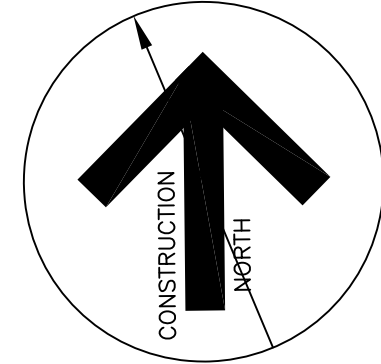


LEGEND



AREA NUMBER
CATCHMENT AREA IN HECTARES
IMPERVIOUS PERCENTAGE
CATCHMENT AREA LIMITS



Contractor must verify all dimensions on the Project Site and report any discrepancies before proceeding with the Work.

This drawing is a part of the Contract Documents and is to be read in conjunction with all other Contract Documents.

© COPYRIGHT - LANHACK Consultants Inc. All rights reserved.

SOURCE: EXISTING BOUNDARY SURVEY AND TOPOGRAPHICAL INFORMATION OBTAINED FROM A.T. MCLAREN LTD., DWG No. 28975, DATED AUGUST 20, 2020.

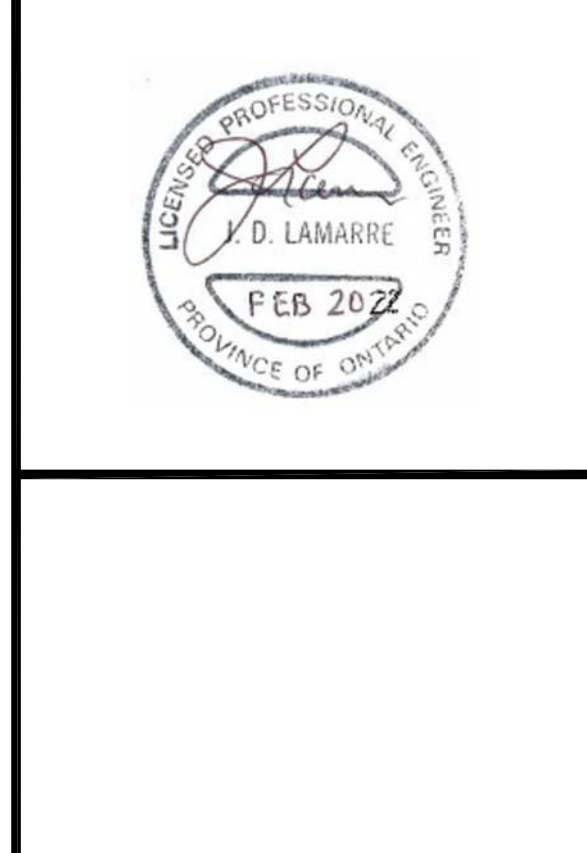
THE POSITION OF THE POLE LINES, CONDUITS, WATERMANS, SEWERS, AND OTHER UTILITIES AND STRUCTURES ARE NOT NECESSARILY SHOWN ON THE CONTRACT DRAWINGS, AND WHERE SHOWN, THE ACCURACY OF THE POSITION OF SUCH UTILITIES AND STRUCTURES IS NOT GUARANTEED.

Revision Record

No.	Description	Date (m/d/y)
A	ISSUED AS PER CITY COMMENTS	02/11/22

No.	Description	Date (m/d/y)
-----	-------------	--------------

Issue Record



LANHACK Consultants Inc.
Consulting Engineers
1705 Upper James Street
Hamilton, ON L9B 1K7
Tel: (905) 777-1454
Fax: (905) 336-8142

**NHDGI
Pulse
Residential
Development**
1842 KING STREET EAST
HAMILTON, ON

Date: MARCH 2021
Drawn By: GRW
Chkd By: SMP
Scale: AS NOTED

**Proposed Catchment
Area Plan**

Project No.: 20064A Drawing No.: C4-2 Rev.: A

Plot Date: 02/11/22
M:\2020\20064A - 1842 King St. ResDev and USV\CA\20064A_C4-2 - Catchment Area Plans.dwg

1 Proposed Catchment Area Plan

C4-2