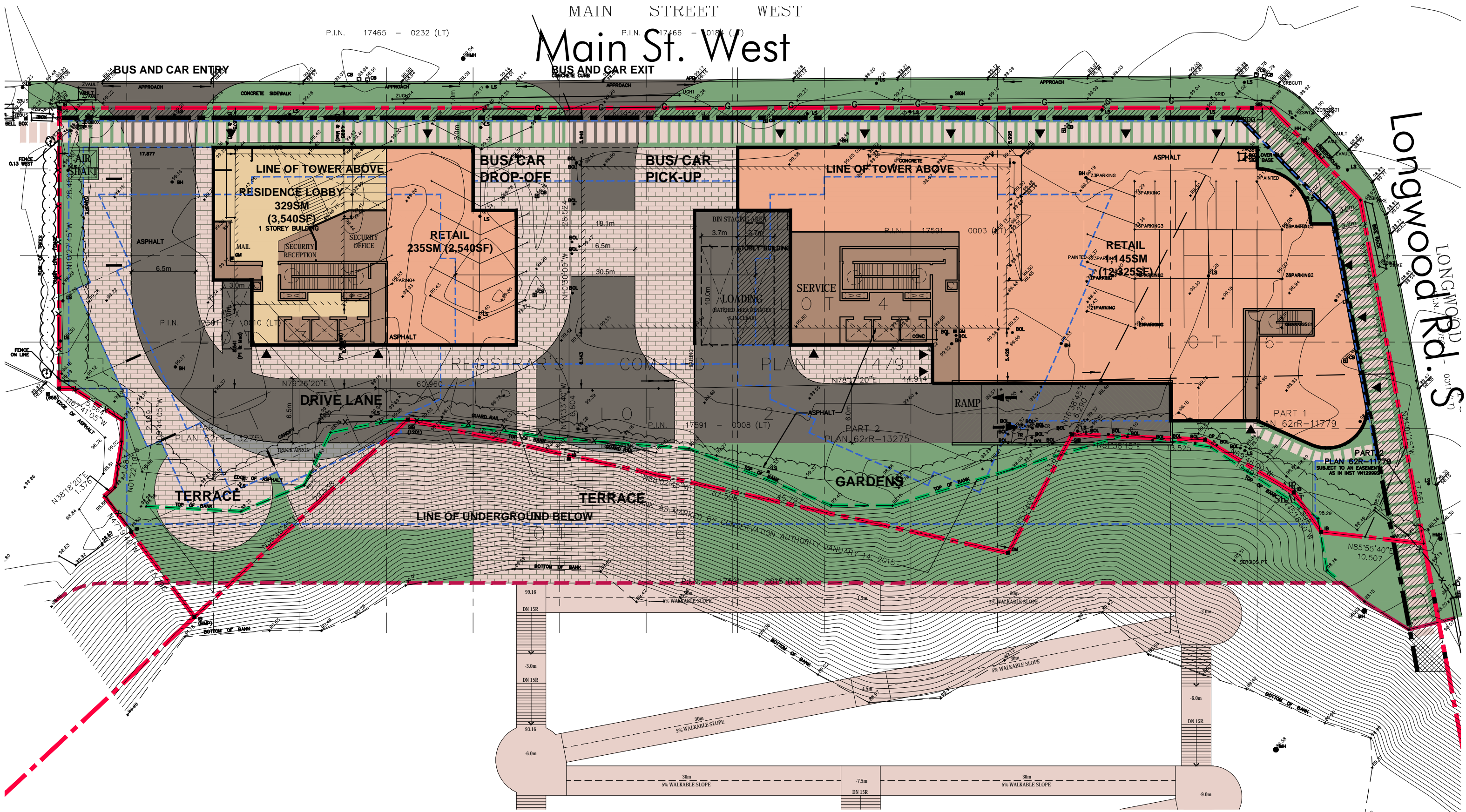


MAIN STREET WEST
Main St. West

P.I.N. 17465 - 0232 (LT)

P.I.N. 17466 - 0184 (LT)



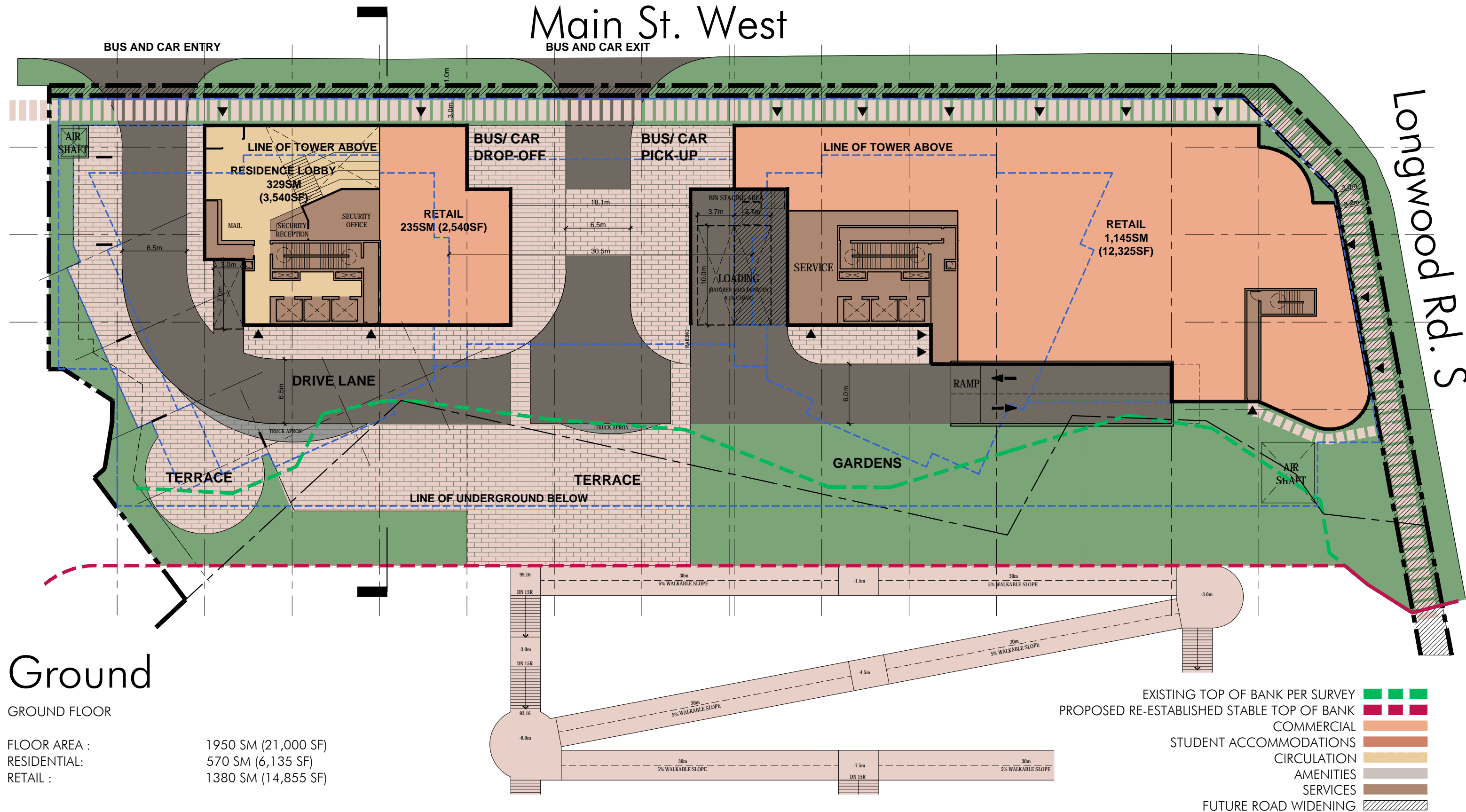
MICHAEL SPAZIANI ARCHITECT INC.
6 Helene Street North, Suite 100
Port Credit, Mississauga, ON, L5G 3B2
T 905 891 0691 F 905 891 0514

Columbia International College
925 Main St. West,
City of Hamilton, Ontario

Site Plan Concept

March 10, 2016

Main St. West



Ground

GROUND FLOOR

FLOOR AREA : 1950 SM (21,000 SF)
 RESIDENTIAL: 570 SM (6,135 SF)
 RETAIL : 1380 SM (14,855 SF)

- EXISTING TOP OF BANK PER SURVEY ■
- PROPOSED RE-ESTABLISHED STABLE TOP OF BANK ■
- COMMERCIAL ■
- STUDENT ACCOMMODATIONS ■
- CIRCULATION ■
- AMENITIES ■
- SERVICES ■
- FUTURE ROAD WIDENING ▨

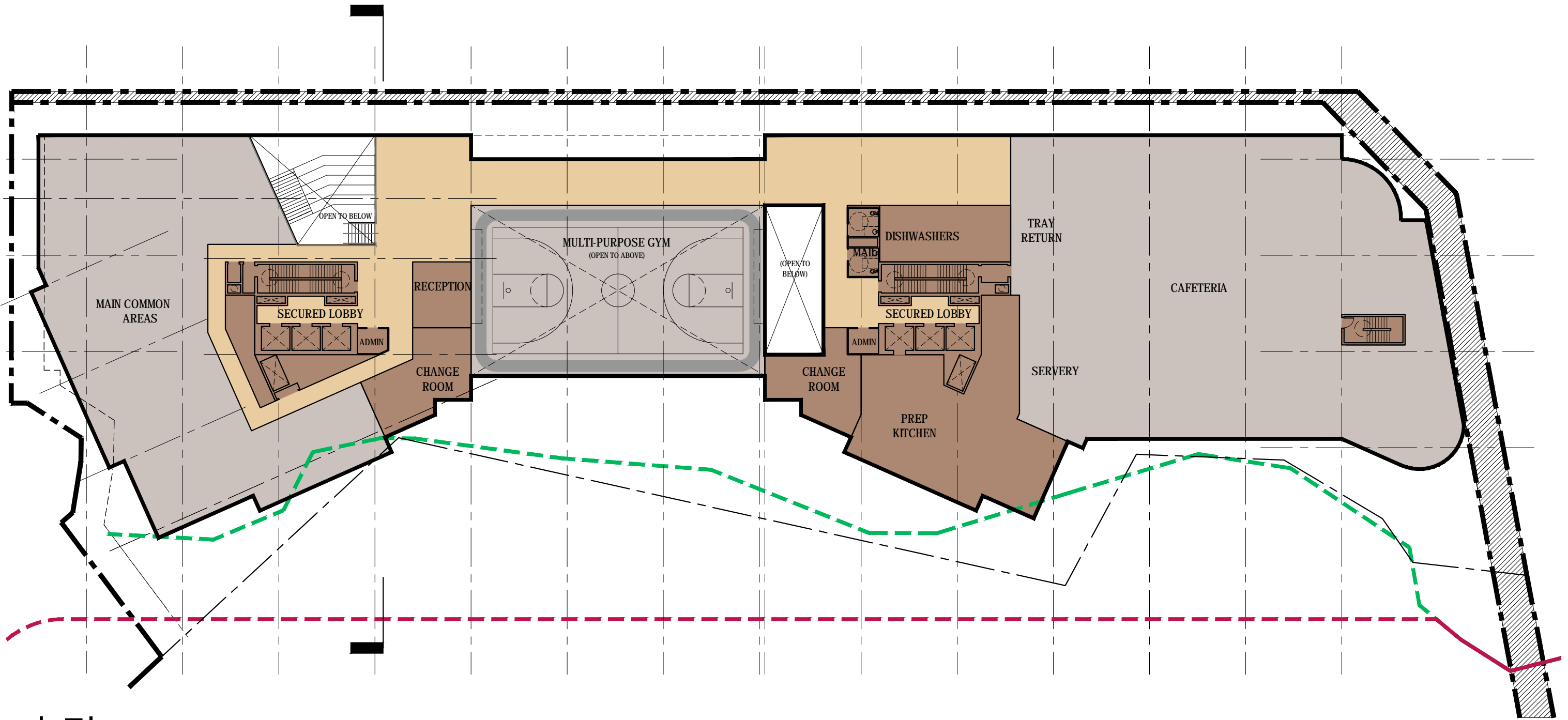


MICHAEL SPAZIANI ARCHITECT INC.
 6 Helene Street North, Suite 100
 Port Credit, Mississauga, ON, L5G 3B2
 T 905 891 0691 F 905 891 0514

Columbia International College
 925 Main St. West,
 City of Hamilton, Ontario

Ground Floor

March 10, 2016



2nd Floor

PODIUM FLOOR

FLOOR AREA : 3495 SM (37,620 SF)

- EXISTING TOP OF BANK PER SURVEY ■
- PROPOSED RE-ESTABLISHED STABLE TOP OF BANK ■
- COMMERCIAL ■
- STUDENT ACCOMMODATIONS ■
- CIRCULATION ■
- AMENITIES ■
- SERVICES ■
- FUTURE ROAD WIDENING



MICHAEL SPAZIANI ARCHITECT INC.
6 Helene Street North, Suite 100
Port Credit, Mississauga, ON, L5G 3B2
T 905 891 0691 F 905 891 0514

Columbia International College
925 Main St. West,
City of Hamilton, Ontario

Second Floor

March 10, 2016



3rd Floor

PODIUM FLOOR

FLOOR AREA : 3380 SM (36380 SF)
 UNITS : 46 UNITS
 No. OF BEDS: 91 BEDS
 TOTAL BEDS: 91 BEDS

- EXISTING TOP OF BANK PER SURVEY ■
- PROPOSED RE-ESTABLISHED STABLE TOP OF BANK ■
- COMMERCIAL ■
- STUDENT ACCOMMODATIONS ■
- CIRCULATION ■
- AMENITIES ■
- SERVICES ■
- FUTURE ROAD WIDENING



MICHAEL SPAZIANI ARCHITECT INC.
 6 Helene Street North, Suite 100
 Port Credit, Mississauga, ON, L5G 3B2
 T 905 891 0691 F 905 891 0514

Columbia International College
 925 Main St. West,
 City of Hamilton, Ontario

Third Floor

March 10, 2016



4th Floor

PODIUM FLOOR

FLOOR AREA : 3380 SM (36380 SF)
 UNITS : 58 UNITS
 No. OF BEDS: 115 BEDS
 TOTAL BEDS: 115 BEDS

- EXISTING TOP OF BANK PER SURVEY ■
- PROPOSED RE-ESTABLISHED STABLE TOP OF BANK ■
- COMMERCIAL ■
- STUDENT ACCOMMODATIONS ■
- CIRCULATION ■
- AMENITIES ■
- SERVICES ■
- FUTURE ROAD WIDENING

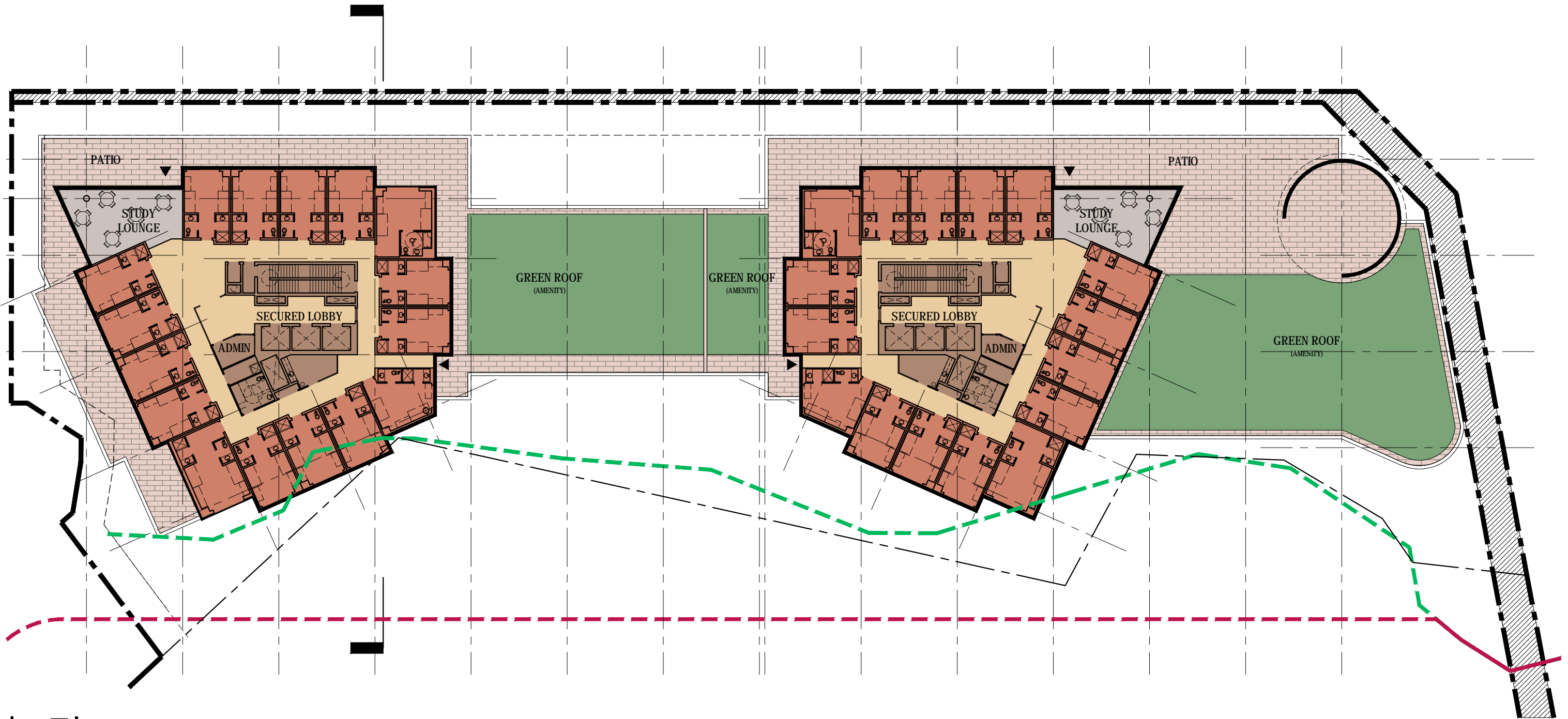


MICHAEL SPAZIANI ARCHITECT INC.
 6 Helene Street North, Suite 100
 Port Credit, Mississauga, ON, L5G 3B2
 T 905 891 0691 F 905 891 0514

Columbia International College
 925 Main St. West,
 City of Hamilton, Ontario

Fourth Floor

March 10, 2016



5th Floor

TOWER A&B - TYPICAL FLOOR

FLOOR AREA : 840 SM (9040 SF)/ TOWER FLOOR
 UNITS : 16 UNITS/ TOWER FLOOR
 No. OF BEDS: 32 BEDS/ TOWER FLOOR
 TOTAL BEDS: 64 BEDS

- EXISTING TOP OF BANK PER SURVEY ■
- PROPOSED RE-ESTABLISHED STABLE TOP OF BANK ■
- COMMERCIAL ■
- STUDENT ACCOMMODATIONS ■
- CIRCULATION ■
- AMENITIES ■
- SERVICES ■
- FUTURE ROAD WIDENING

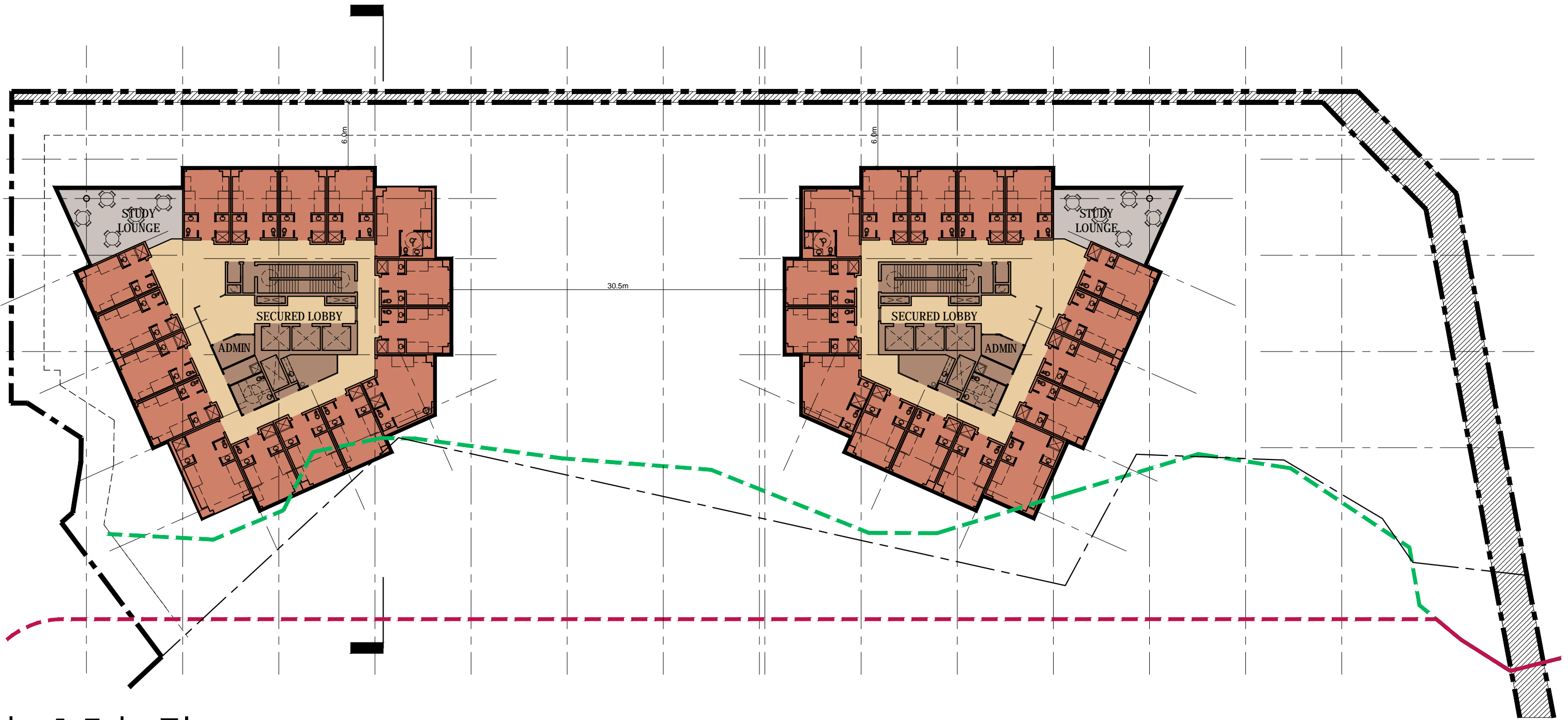


MICHAEL SPAZIANI ARCHITECT INC.
 6 Helene Street North, Suite 100
 Port Credit, Mississauga, ON, L5G 3B2
 T 905 891 0691 F 905 891 0514

Columbia International College
 925 Main St. West,
 City of Hamilton, Ontario

Fifth Floor

March 10, 2016



6th-15th Floor

TOWER A&B - TYPICAL FLOOR

FLOOR AREA : 840 SM (9040 SF)/ TOWER FLOOR
 UNITS : 16 UNITS / TOWER FLOOR
 No. OF BEDS: 32 BEDS/ TOWER FLOOR
 TOTAL BEDS: 640 BEDS

- EXISTING TOP OF BANK PER SURVEY ■
- PROPOSED RE-ESTABLISHED STABLE TOP OF BANK ■
- COMMERCIAL ■
- STUDENT ACCOMMODATIONS ■
- CIRCULATION ■
- AMENITIES ■
- SERVICES ■
- FUTURE ROAD WIDENING

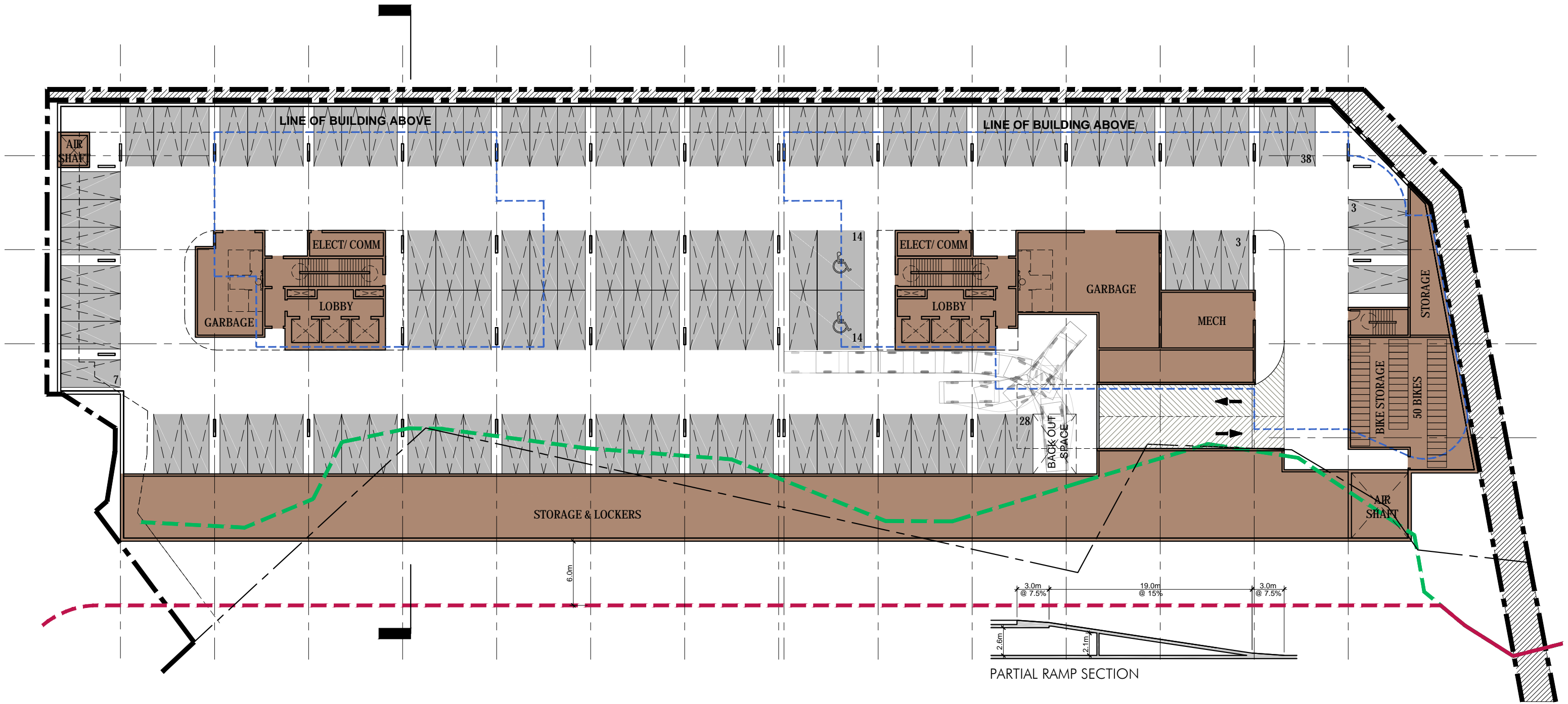


MICHAEL SPAZIANI ARCHITECT INC.
 6 Helene Street North, Suite 100
 Port Credit, Mississauga, ON, L5G 3B2
 T 905 891 0691 F 905 891 0514

Columbia International College
 925 Main St. West,
 City of Hamilton, Ontario

Typical Tower Floor

March 10, 2016



P1 Parking

UNDERGROUND PARKING

AREA : 5,185 SM (55,810 SF)
 SPACES : 107 SPACES (Including 2 BF spaces)
 BIKES : 50 BIKES

- EXISTING TOP OF BANK PER SURVEY ■
- PROPOSED RE-ESTABLISHED STABLE TOP OF BANK ■
- COMMERCIAL ■
- STUDENT ACCOMMODATIONS ■
- CIRCULATION ■
- AMENITIES ■
- SERVICES ■
- FUTURE ROAD WIDENING ▨

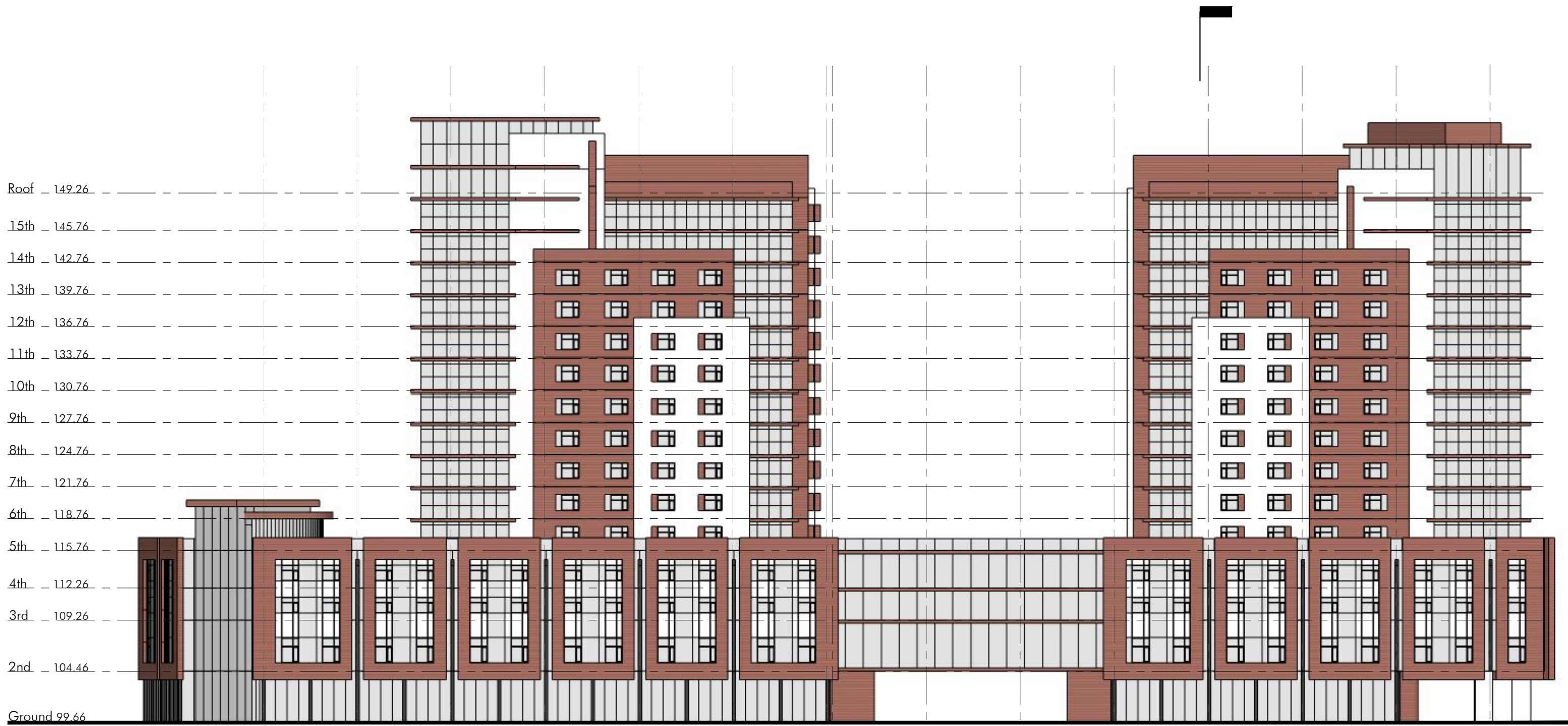


MICHAEL SPAZIANI ARCHITECT INC.
 6 Helene Street North, Suite 100
 Port Credit, Mississauga, ON, L5G 3B2
 T 905 891 0691 F 905 891 0514

Columbia International College
 925 Main St. West,
 City of Hamilton, Ontario

P1 Parking

March 10, 2016



North Elevation



MICHAEL SPAZIANI ARCHITECT INC.
 6 Helene Street North, Suite 100
 Port Credit, Mississauga, ON, L5G 3B2
 T 905 891 0691 F 905 891 0514

Columbia International College
 925 Main St. West,
 City of Hamilton, Ontario

Elevation Concepts

March 10, 2016



South Elevation



MICHAEL SPAZIANI ARCHITECT INC.
6 Helene Street North, Suite 100
Port Credit, Mississauga, ON, L5G 3B2
T 905 891 0691 F 905 891 0514

Columbia International College
925 Main St. West,
City of Hamilton, Ontario

Elevation Concepts

March 10, 2016



East Elevation

West Elevation



MICHAEL SPAZIANI ARCHITECT INC.
 6 Helene Street North, Suite 100
 Port Credit, Mississauga, ON, L5G 3B2
 T 905 891 0691 F 905 891 0514

Columbia International College
 925 Main St. West,
 City of Hamilton, Ontario

Elevation Concepts

March 10, 2016

