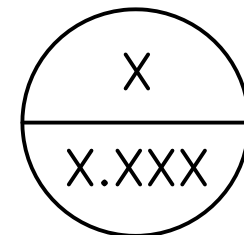
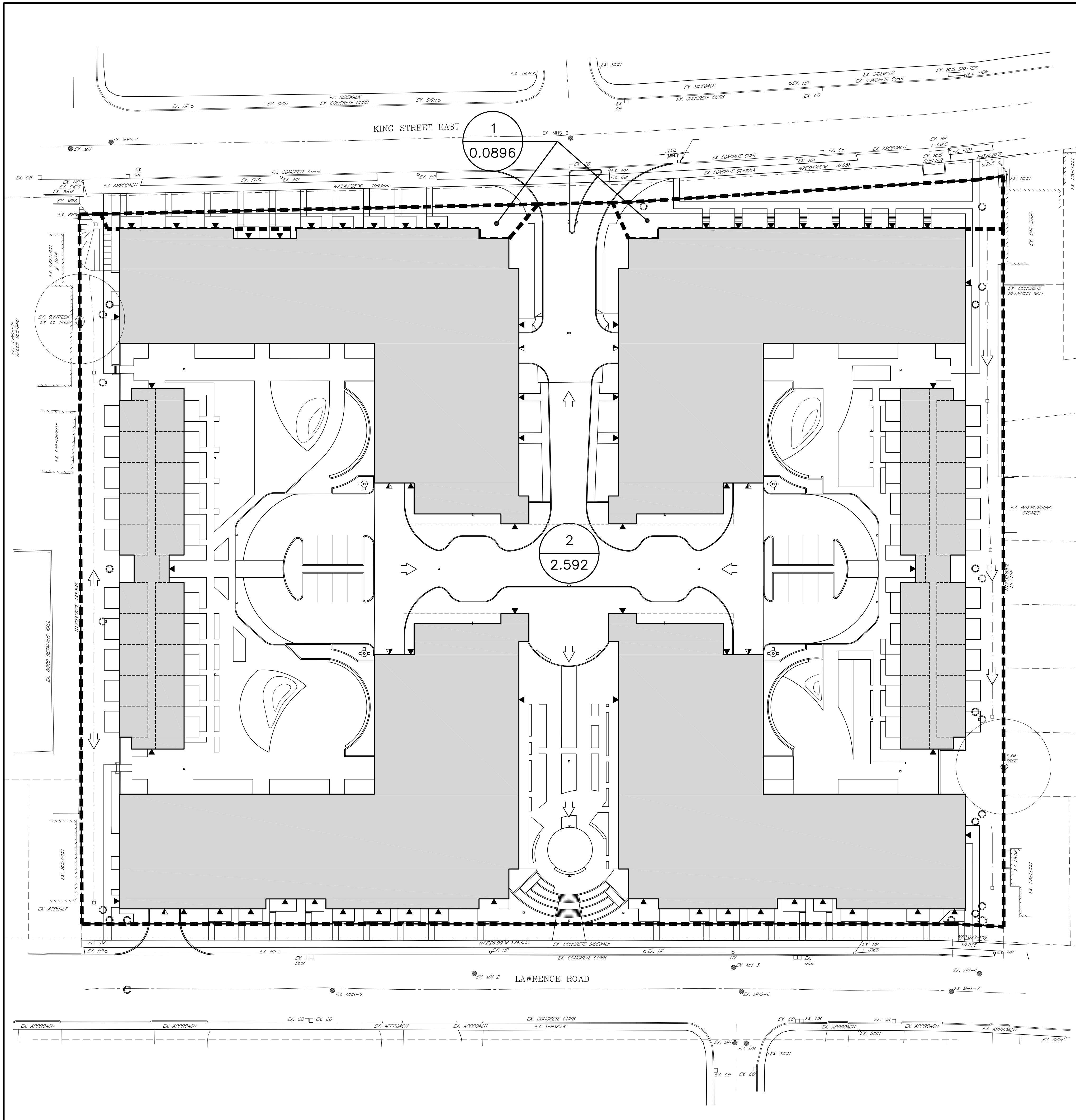
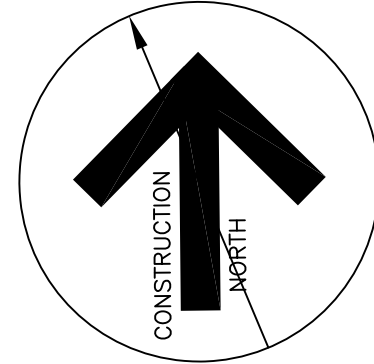


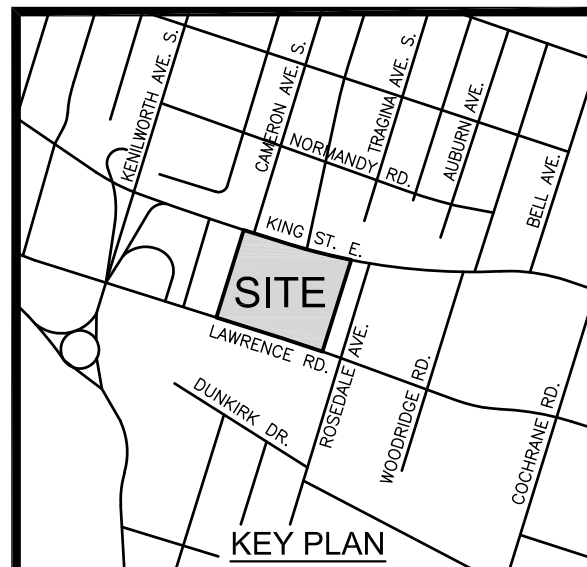
**LEGEND**



AREA NUMBER  
DRAINAGE AREA IN HECTARES  
DRAINAGE AREA LIMITS



1 Proposed Storm Drainage Area Plan  
C4-3



Contractor must verify all dimensions on the Project Site and report any discrepancies before proceeding with the Work.

This drawing is a part of the Contract Documents and is to be read in conjunction with all other Contract Documents.

© COPYRIGHT - LANHACK Consultants Inc. All rights reserved.

SOURCE: EXISTING BOUNDARY SURVEY AND TOPOGRAPHICAL INFORMATION OBTAINED FROM A.T. McLAREN LTD., DWG No. 28975, DATED AUGUST 20, 2020.

THE POSITION OF THE POLE LINES, CONDUITS, WATERMANS, SEWERS, AND OTHER UTILITIES AND STRUCTURES ARE NOT NECESSARILY SHOWN ON THE CONTRACT DRAWINGS, AND WHERE SHOWN, THE ACCURACY OF THE POSITION OF SUCH UTILITIES AND STRUCTURES IS NOT GUARANTEED.

**Revision Record**

No.	Description	Date (m/d/y)
A	ISSUED AS PER CITY COMMENTS	02/11/22

**Issue Record**



**LANHACK** Consultants Inc.  
Consulting Engineers  
1703 Upper James Street  
Hamilton, ON L9B 1K7  
Tel: (905) 777-1454  
Fax: (905) 336-8142

**NHDGI  
Pulse  
Residential  
Development**

1842 KING STREET EAST  
HAMILTON, ON

Date: MARCH 2021  
Drawn By: GRW  
Chkd By: SMP  
Scale: AS NOTED

**Proposed Storm  
Drainage Area Plan**

Project No.: 20064A Drawing No.: C4-3 Rev.: A

Plot Date: 02/11/22  
1:2022/20064A - 1842 King St. NHDGI and US/CA/PA  
20064A\_C03 - Detention Area Plans.dwg