
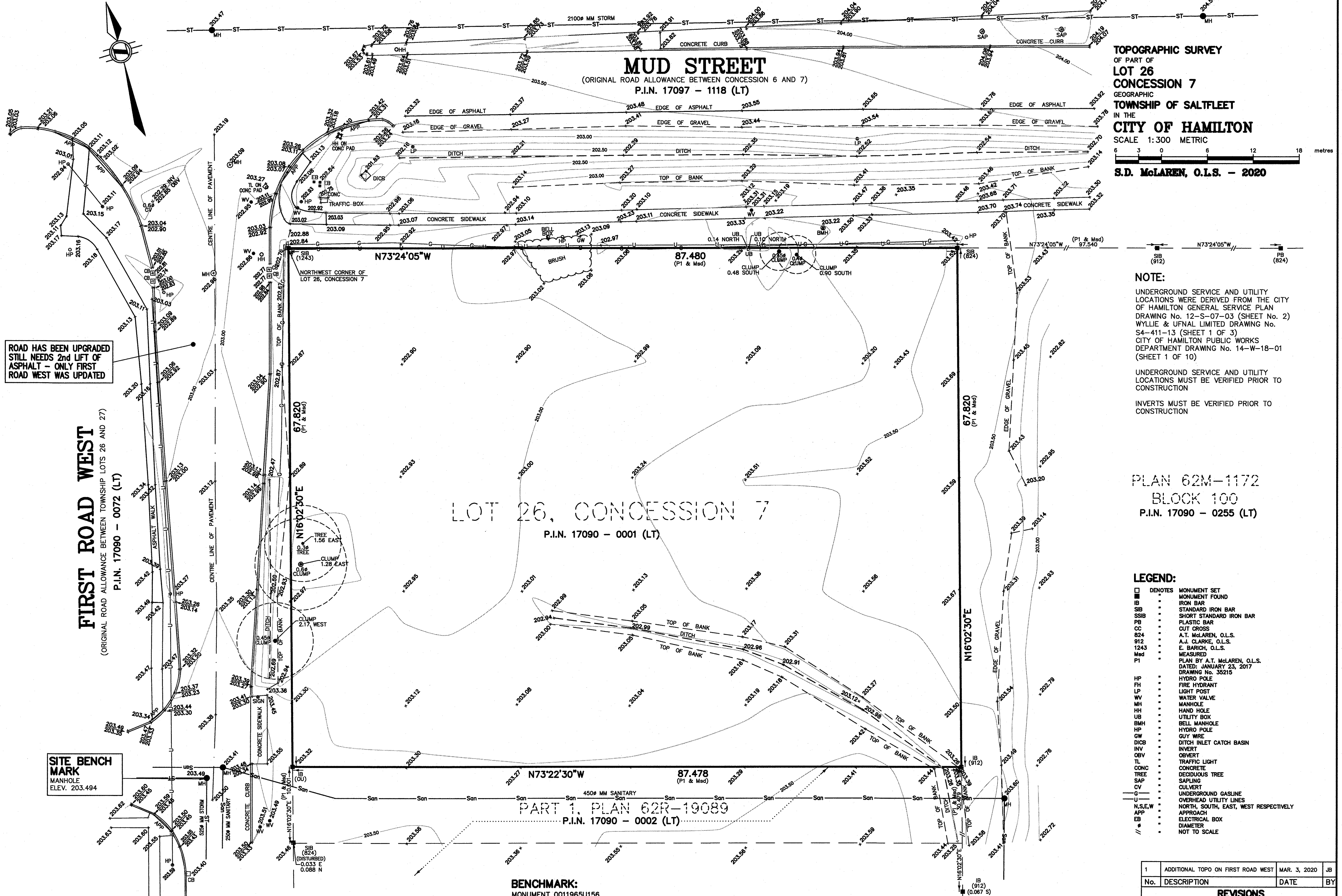


TOPOGRAPHIC SURVEY
 OF PART OF
LOT 26
CONCESSION 7
 GEOGRAPHIC
TOWNSHIP OF SALTLEET
 IN THE
CITY OF HAMILTON
 SCALE 1:300 METRIC

S.D. McLAREN, O.L.S. - 2020

MUD STREET
 (ORIGINAL ROAD ALLOWANCE BETWEEN CONCESSION 6 AND 7)
 P.I.N. 17097 - 1118 (LT)



ROAD HAS BEEN UPGRADED
 STILL NEEDS 2nd LIFT OF
 ASPHALT - ONLY FIRST
 ROAD WEST WAS UPDATED

SITE BENCH MARK
 MANHOLE
 ELEV. 203.494


NOTE:
 UNDERGROUND SERVICE AND UTILITY
 LOCATIONS WERE DERIVED FROM THE CITY
 OF HAMILTON GENERAL SERVICE PLAN
 DRAWING No. 12-S-07-03 (SHEET 1 OF 2)
 WYLLIE & UFNL LIMITED DRAWING No.
 S4-411-13 (SHEET 1 OF 3)
 CITY OF HAMILTON PUBLIC WORKS
 DEPARTMENT DRAWING No. 14-W-18-01
 (SHEET 1 OF 10)
 UNDERGROUND SERVICE AND UTILITY
 LOCATIONS MUST BE VERIFIED PRIOR TO
 CONSTRUCTION
 INVERTS MUST BE VERIFIED PRIOR TO
 CONSTRUCTION

PLAN 62M-1172
 BLOCK 100
 P.I.N. 17090 - 0255 (LT)

- LEGEND:**
- DENOTES MONUMENT SET
 - MONUMENT FOUND
 - IB IRON BAR
 - SIB STANDARD IRON BAR
 - SSIB SHORT STANDARD IRON BAR
 - PB PLASTIC BAR
 - CC CUT CROSS
 - 824 A.T. McLAREN, O.L.S.
 - 912 A.J. CLARKE, O.L.S.
 - 1243 E. BARICH, O.L.S.
 - Med MEASURED
 - P1 PLAN BY A.T. McLAREN, O.L.S.
 - DATED: JANUARY 23, 2017
 - DRAWING No. 35215
 - HP HYDRO POLE
 - FH FIRE HYDRANT
 - LP LIGHT POST
 - WV WATER VALVE
 - MH MANHOLE
 - HH HAND HOLE
 - UB UTILITY BOX
 - BMH BELL MANHOLE
 - HP HYDRO POLE
 - GW GUY WIRE
 - DICB DITCH INLET CATCH BASIN
 - INV INVERT
 - OBV OBVERT
 - TL TRAFFIC LIGHT
 - CONC CONCRETE
 - TREE DECIDUOUS TREE
 - SAP SAPLING
 - CV CULVERT
 - UNDERGROUND GASLINE
 - OVERHEAD UTILITY LINES
 - N,S,E,W NORTH, SOUTH, EAST, WEST RESPECTIVELY
 - APP APPROACH
 - EB ELECTRICAL BOX
 - ∅ DIAMETER
 - NOT TO SCALE

BENCHMARK:
 MONUMENT 0011965U156
 Township: HAMILTON-WENTWORTH CONCRETE CULVERT UNDER HIGHWAY
 NO. 20, 1.9 KM NORTH OF HIGHWAY NO. 53, 152 M SOUTH OF MUD
 STREET, 10.7 M SOUTH OF POWER POLE NO. 30, TABLET IN TOP OF
 CULVERT 15 CM FROM EAST END, 15 CM FROM SOUTH EDGE, SLIGHTLY
 BELOW ROAD LEVEL.
 ELEVATION: 206.430 metres CGVD-1928:1978


METRIC NOTE
 DISTANCES SHOWN ON THIS
 PLAN ARE IN METRES AND
 CAN BE CONVERTED TO FEET
 BY DIVIDING BY 0.3048

SURVEYOR'S CERTIFICATE:
 I CERTIFY THAT:
 1. THIS SURVEY AND PLAN ARE CORRECT AND IN ACCORDANCE WITH
 THE SURVEY ACT, THE SURVEYORS ACT AND THE REGULATIONS
 MADE UNDER THEM
 2. THE SURVEY WAS COMPLETED ON THE 8th DAY OF FEBRUARY, 2017
 FEBRUARY 10, 2017
 DATE 
 S. DAN McLAREN, O.L.S.

No.	DESCRIPTION	DATE	BY
1	ADDITIONAL TOPO ON FIRST ROAD WEST	MAR. 3, 2020	JB

REVISIONS

© S.D. McLAREN, O.L.S. - 2020. NO PERSON MAY COPY
 REPRODUCE, DISTRIBUTE OR ALTER THIS PLAN IN WHOLE OR IN
 PART WITHOUT THE WRITTEN PERMISSION OF S.D. McLAREN, O.L.S.

A.T. McLaren Limited
 LEGAL AND ENGINEERING SURVEYS

 69 JOHN STREET SOUTH, SUITE 230
 HAMILTON, ONTARIO, L8N 2B9
 PHONE (905) 527-8559 FAX (905) 527-0032

Drawn AC Checked RBM Scale 1:300 Dwg.No. 35215-U