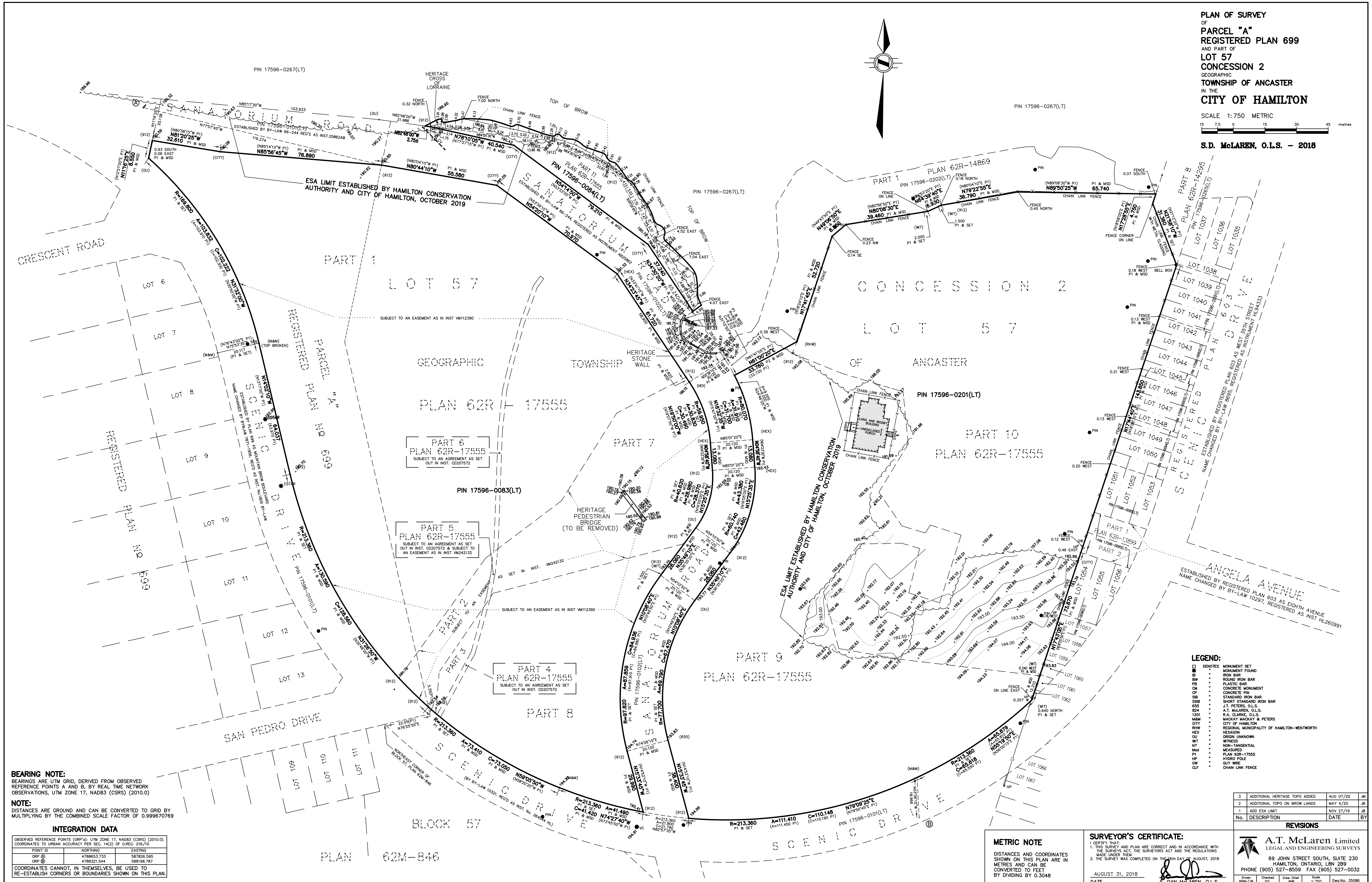


**PLAN OF SURVEY
OF
PARCEL "A"
REGISTERED PLAN 699
AND PART OF
LOT 57
CONCESSION 2
GEOGRAPHIC
TOWNSHIP OF ANCASTER
IN THE
CITY OF HAMILTON**

SCALE 1:750 METRIC
15 7.5 0 15 30 45 metres

S.D. McLAREN, O.L.S. - 2018



BEARING NOTE:
BEARINGS ARE UTM GRID, DERIVED FROM OBSERVED REFERENCE POINTS A AND B, BY REAL TIME NETWORK OBSERVATIONS, UTM ZONE 17, NAD83 (CSRS) (2010.0)

NOTE:
DISTANCES ARE GROUND AND CAN BE CONVERTED TO GRID BY MULTIPLYING BY THE COMBINED SCALE FACTOR OF 0.999670769

INTEGRATION DATA

POINT ID	NORTHING	EASTING
ORP @	4788653.333	587826.595
ORP @	4788321.544	588198.787

COORDINATES CANNOT, IN THEMSELVES, BE USED TO RE-ESTABLISH CORNERS OR BOUNDARIES SHOWN ON THIS PLAN.

LEGEND:

- DENOTES MONUMENT SET
- MONUMENT FOUND
- IRON BAR
- ROUND IRON BAR
- PLASTIC BAR
- CONCRETE PIN
- STANDARD IRON BAR
- SHORT STANDARD IRON BAR
- I.F. PETERS, O.L.S.
- A.T. McLAREN, O.L.S.
- R.A. CLARKE, O.L.S.
- MACKAY MACKAY & PETERS
- CITY OF HAMILTON
- REGIONAL MUNICIPALITY OF HAMILTON-WENTWORTH
- IRON UNKNOWN
- WITNESS
- MEASURED
- HOLED POLE
- GUY WIRE
- CHAIN LINK FENCE

REVISIONS

No.	DESCRIPTION	DATE	BY
3	ADDITIONAL HERITAGE TOPO ADDED	AUG 07/20	JM
2	ADDITIONAL TOPO ON BROW LANDS	MAY 4/20	JB
1	ADD ESA LIMIT	NOV 27/19	JB

METRIC NOTE
DISTANCES AND COORDINATES SHOWN ON THIS PLAN ARE IN METRES AND CAN BE CONVERTED TO FEET BY DIVIDING BY 0.3048

SURVEYOR'S CERTIFICATE:
I, THE SURVEYOR, DECLARE THAT THIS SURVEY AND PLAN ARE CORRECT AND IN ACCORDANCE WITH THE SURVEY ACT, THE SURVEYORS ACT AND THE REGULATIONS MADE UNDER THEM.
THE SURVEY WAS COMPLETED ON THE 30th DAY OF AUGUST, 2018.
DATE: AUGUST 31, 2018
S. DAN McLAREN, O.L.S.

A.T. McLaren Limited
LEGAL AND ENGINEERING SURVEYS
69 JOHN STREET SOUTH, SUITE 230
HAMILTON, ONTARIO, L8N 2B9
PHONE (905) 527-8559 FAX (905) 527-0032
Drawn: RBM/JB Checked: DG Crew Chief: MW Scale: 1:750 Dwg No.: 35086