

TOPOGRAPHIC SURVEY  
 OF PART OF  
**LOT 5**  
**CONCESSION 5**  
 GEOGRAPHIC  
 TOWNSHIP OF GLANFORD  
 AND  
**LOT 53**  
**REGISTERED PLAN 313**  
 IN THE  
**CITY OF HAMILTON**

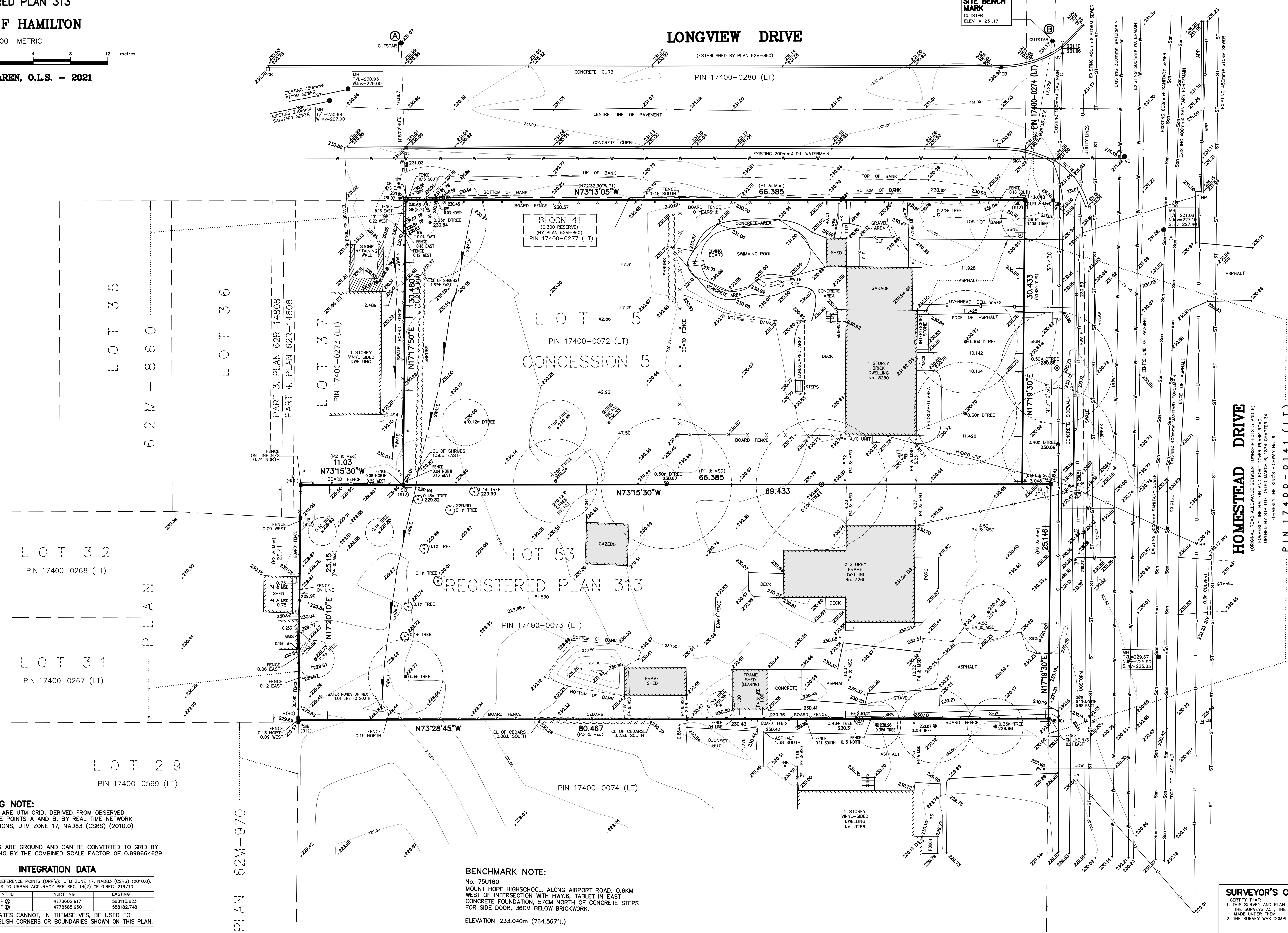
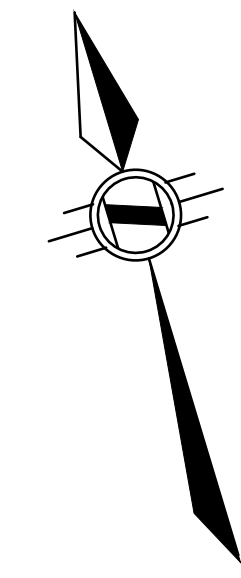
SCALE 1:200 METRIC

S.D. McLAREN, O.L.S. - 2021

**LONGVIEW DRIVE**

(ESTABLISHED BY PLAN 62M-860)

**SITE BENCH MARK**  
 CUTSTAR  
 ELEV. = 231.17



- LEGEND:**
- DENOTES MONUMENT SET
  - MONUMENT FOUND
  - SB STANDARD IRON BAR
  - SSB SHORT STANDARD IRON BAR
  - 824 A.T. McLAREN, O.L.S.
  - 912 A.L. CLARKE, O.L.S.
  - BC BARCHI GRENKE SURVEYING LTD.
  - (OU) ORION UNIFORM
  - Msd MEASURED
  - P3 PLAN 62M-12275
  - P4 PLAN 52M-860
  - P5 PLAN 513
  - P6 PLAN BY BARCHI/GRENKE, DATED SEPT. 29, 2019
  - DI FIRE HYDRANT
  - CI CATCH BASIN
  - CV MANHOLE
  - WV WATER VALVE
  - VP HYDRO POLE
  - VC LIGHT POST
  - VS VALVE CHAMBER
  - IS GAS METER
  - ISW RETAINING WALL
  - ISD DOOR SILL
  - ISF GARAGE FLOOR
  - ISG PATIO STONES
  - ISW POAT & WIRE FENCE
  - ISW STONE RETAINING WALL
  - ISW RETAINING WALL
  - ISW GAS MARKER
  - ISW BARNET
  - ISW BASKETBALL NET
  - ISW TOP OF WELL
  - ISW DECIDUOUS TREE
  - ISW DIAMETER

**NOTE:**

UNDERGROUND SERVICE AND UTILITY LOCATIONS WERE LOCATED BY CITY OF HAMILTON DRAWING No. 99-S-24AB (SHEET 6 of 8)

UNDERGROUND SERVICE AND UTILITY LOCATIONS MUST BE VERIFIED PRIOR TO CONSTRUCTION

INVERTS MUST BE VERIFIED PRIOR TO CONSTRUCTION

**METRIC NOTE**

DISTANCES AND COORDINATES SHOWN ON THIS PLAN ARE IN METRES AND CAN BE CONVERTED TO FEET BY DIVIDING BY 0.3048

**BEARING NOTE:**  
 BEARINGS ARE UTM GRID, DERIVED FROM OBSERVED REFERENCE POINTS A AND B, BY REAL TIME NETWORK OBSERVATIONS, UTM ZONE 17, NAD83 (CSRS) (2010.0)

**NOTE:**  
 DISTANCES ARE GROUND AND CAN BE CONVERTED TO GRID BY MULTIPLYING BY THE COMBINED SCALE FACTOR OF 0.999664629

**INTEGRATION DATA**

OBSERVED REFERENCE POINTS (ORP's), UTM ZONE 17, NAD83 (CSRS) (2010.0), COORDINATES TO URBAN ACCURACY PER SEC. 14(2) OF O.REG. 216/10	POINT ID	NORTHING	EASTING
	ORP ①	479602.917	588115.823
	ORP ②	4778585.950	588182.748

COORDINATES CANNOT, IN THEMSELVES, BE USED TO RE-ESTABLISH CORNERS OR BOUNDARIES SHOWN ON THIS PLAN.

**BENCHMARK NOTE:**

No. 75U160  
 MOUNT HOPE HIGH SCHOOL, ALONG AIRPORT ROAD, 0.6KM WEST OF INTERSECTION WITH HWY.6, TABLET IN EAST CONCRETE FOUNDATION, 57CM NORTH OF CONCRETE STEPS FOR SIDE DOOR, 36CM BELOW BRICKWORK.  
 ELEVATION-233.040m (764.567ft.)

**SURVEYOR'S CERTIFICATE:**

I, S.D. McLAREN, O.L.S., do hereby certify that the above plan and map are correct and in accordance with the SURVEY ACT, the SURVEYORS ACT and the REGULATIONS MADE UNDER THEM.

2. THE SURVEY WAS COMPLETED ON THE 20th DAY OF AUGUST, 2021.

DATE: SEPTEMBER 8, 2021

S.D. McLAREN, O.L.S.

**A.T. McLaren Limited**  
 LEGAL AND ENGINEERING SURVEYS  
 69 JOHN STREET SOUTH, SUITE 230  
 HAMILTON, ONTARIO, L9W 2B9  
 PHONE (905) 527-8559 FAX (905) 527-0032

Drawn by: [Signature] Checked by: [Signature] Scale: 1:200 Date: [Signature] Dwg. No.: 36761