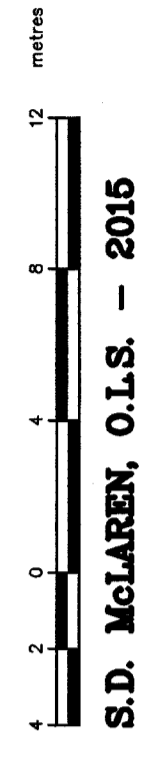


TOPOGRAPHIC SURVEY

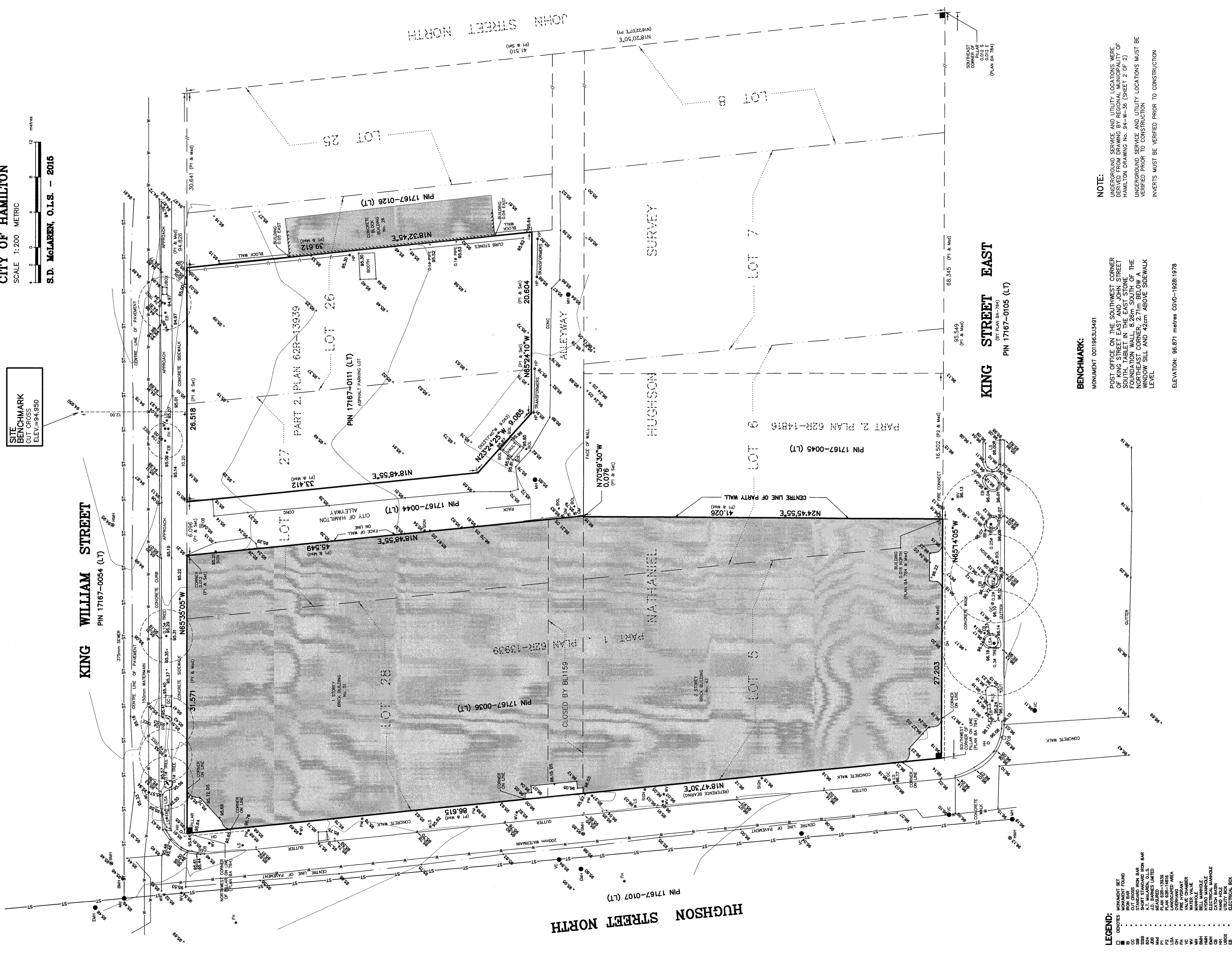
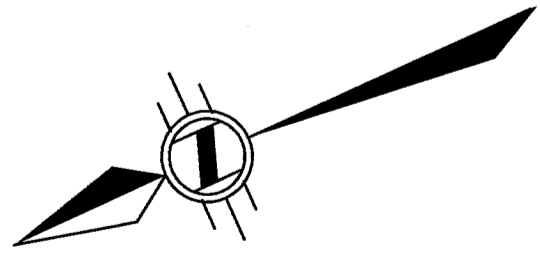
OF LOT 5 AND PART OF LOT 6 NORTH SIDE OF KING STREET BETWEEN HUGHSON AND JOHN STREET AND LOT 28 AND PART OF LOTS 26 AND 27 SOUTH SIDE OF KING WILLIAM STREET BETWEEN HUGHSON AND JOHN STREET ALLEYWAY BETWEEN HUGHSON, KING WILLIAM, JOHN & KING STREET (CLOSED BY BL1159) ALL IN NATHANIEL HUGHSON SURVEY (UNREGISTERED) IN THE CITY OF HAMILTON

SCALE 1:200 METRIC



S.D. McLAREN, O.L.S. - 2016

SITE BENCHMARK OUT CROSS ELEV.=94.950



- LEGEND: DOTTED LINE MONUMENT SET, RISE BAR, STANDARD IRON BAR, ...

BENCHMARK: MONUMENT 001196303491

NOTE: POST OFFICE ON THE SOUTHWEST CORNER OF KING STREET EAST AND JOHN STREET ...

METRIC NOTE: BEARINGS SHOWN ON THIS PLAN ARE IN METRES AND CAN BE CONVERTED TO FEET BY DIVIDING BY 0.3048

BEARING NOTE: BEARINGS ARE ASTRONOMIC AND ARE REFERRED TO THE EASTERLY LIMIT OF HUGHSON STREET NORTH AS SHOWN ON PLAN 62R-13639 AS BEING N1674730'E

DATE: APRIL 27, 2015

S. DAN McLAREN, O.L.S.

AT M. McLAREN & ASSOCIATES SURVEYORS

© S.D. McLAREN, O.L.S. - 2015. NO PERSON MAY COPY OR REPRODUCE OR ALTER THIS PLAN IN WHOLE OR IN PART WITHOUT THE WRITTEN PERMISSION OF S.D. McLAREN, O.L.S.