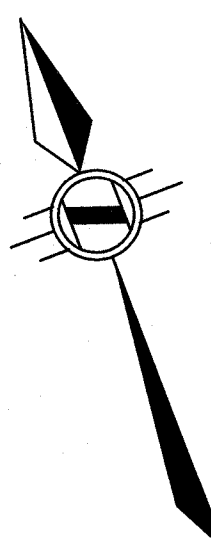


TOPOGRAPHIC SURVEY
OF
LOTS 1, 2, 3, & 4
REGISTERED PLAN 31
IN THE
CITY OF HAMILTON

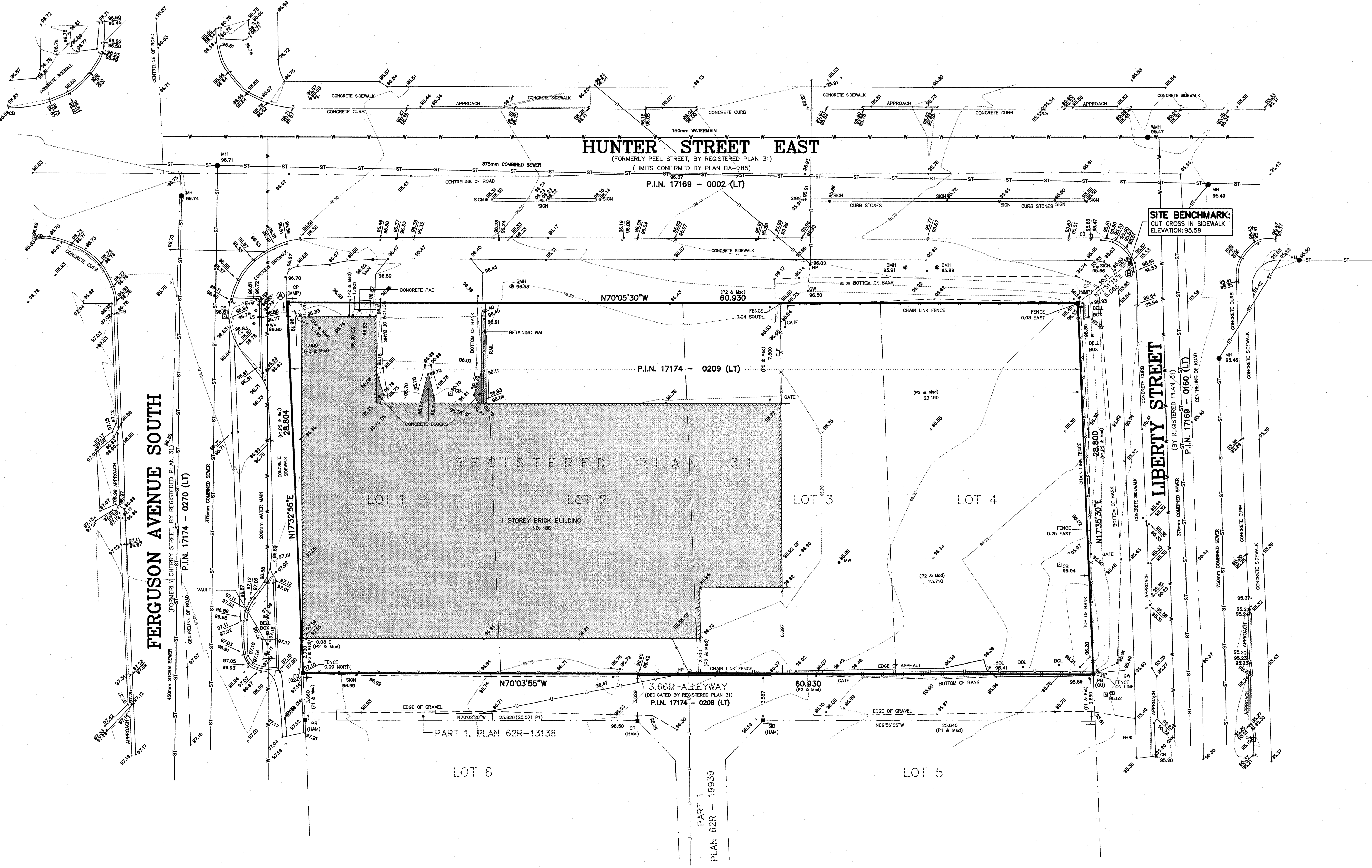
SCALE 1:150 METRIC



S.D. McLAREN, O.L.S. - 2021



BENCHMARK NOTE:
CITY OF HAMILTON BENCHMARK No. 0011963U3497
HAMILTON WENTWORTH CATHEDRAL SCHOOL ON THE SOUTHEAST CORNER OF MAIN STREET AND EMERALD STREET SOUTH. TABLET IN THE NORTH FACE OF THE STONE FOUNDATION UNDER THE SECOND BUTTRESS, EAST OF THE NORTHWEST CORNER 0.15 METERS BELOW STONE SIDING.
ELEVATION: 92.551 METRES (CGVD-1928: 1978 ADJUSTMENT)



- LEGEND:**
- DENOTES MONUMENT SET
 - MONUMENT FOUND
 - IB IRON BAR
 - SBI STANDED IRON BAR
 - CP CONCRETE PIN
 - SSB SHORT STANDARD IRON BAR
 - 824 A.T. McLAREN, O.L.S.
 - M&P MACKAY, MACKAY AND PETERS
 - APP APPROACH
 - BOL BOLLARD
 - CV CATCH BASIN
 - CB CATCH BASIN
 - DS DOOR SILL
 - FH FIRE HYDRANT
 - GF GARAGE FLOOR
 - GV GAS VALVE
 - GW GUY WIRE
 - HP HYDRO POLE
 - INV INVERT
 - LP LIGHT POST
 - LSA LANDSCAPED AREA
 - MH MANHOLE
 - BMH BELL MANHOLE
 - RTW RETAINING WALL
 - TL TOP OF LD
 - TL TRAFFIC LIGHT
 - WC WATER CHAMBER
 - WV WATER VALVE
 - BOL BOLLARD
 - CLF CHAIN LINK FENCE
 - P1 PLAN 62R-19939
 - P2 PLAN BY MACKAY, MACKAY AND PETERS DATED MARCH 12, 2008
 - P3 PLAN BY MACKAY, MACKAY AND PETERS DATED AUGUST 6, 2016

- PROPERTY BOUNDARY**
- BUILDING BOUNDARY
 - BELL CABLE
 - GAS MAIN
 - WATER MAIN
 - SANITARY SEWER
 - STORM SEWER
 - OVERHEAD UTILITIES
 - OVERHEAD HYDRO LINES

BEARING NOTE:
BEARINGS ARE UTM GRID, DERIVED FROM OBSERVED REFERENCE POINTS A AND B, BY REAL TIME NETWORK OBSERVATIONS, UTM ZONE 17, NAD83 (CSRS) (2010.0)

NOTE:
DISTANCES ARE GROUND AND CAN BE CONVERTED TO GRID BY MULTIPLYING BY THE COMBINED SCALE FACTOR OF 0.99999464

INTEGRATION DATA

POINT ID	NORTHING	EASTING
GRP A	4789383.820	592295.268
GRP B	4789384.857	592357.318

COORDINATES CANNOT, IN THEMSELVES, BE USED TO RE-ESTABLISH CORNERS OR BOUNDARIES SHOWN ON THIS PLAN.

NOTE:
UNDERGROUND SERVICE AND UTILITY LOCATIONS MUST BE VERIFIED PRIOR TO CONSTRUCTION
INVERTS MUST BE VERIFIED PRIOR TO CONSTRUCTION

METRIC NOTE:
DISTANCES SHOWN ON THIS PLAN ARE IN METRES AND CAN BE CONVERTED TO FEET BY DIVIDING BY 0.3048

SURVEYOR'S CERTIFICATE:
I CERTIFY THAT:
1. THIS SURVEY AND PLAN ARE CORRECT AND IN ACCORDANCE WITH THE SURVEY ACT, THE SURVEYORS ACT AND THE REGULATIONS MADE UNDER THEM.
2. THE SURVEY WAS COMPLETED ON THE 18th DAY OF AUGUST, 2021.
DATE: Sept. 9, 2021
S. DAN McLAREN, O.L.S.

© S.D. McLAREN, O.L.S. - 2021. NO PERSON MAY COPY, REPRODUCE, DISTRIBUTE OR ALTER THIS PLAN IN WHOLE OR IN PART WITHOUT THE WRITTEN PERMISSION OF S.D. McLAREN, O.L.S.

A.T. McLaren Limited
LEGAL AND ENGINEERING SURVEYS
69 JOHN STREET SOUTH, SUITE 230
HAMILTON, ONTARIO, L8N 2B9
PHONE (905) 527-8559 FAX (905) 527-0032

Drawn: KAM
Checked: DAM
Crew Chief: WML
Scale: 1:150
Dwg No.: 36759