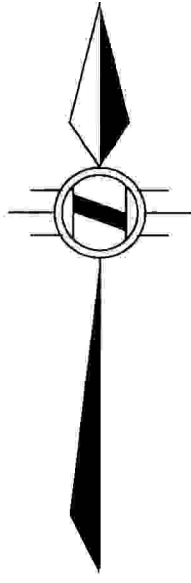


TOPOGRAPHIC SURVEY  
OF PART OF  
LOTS 9, 11 & 17  
AND ALL OF  
LOT 10  
WEST SIDE OF WALNUT STREET  
REGISTERED PLAN 48  
IN THE  
CITY OF HAMILTON

SCALE 1:150 METRIC

S.D. McLAREN, O.L.S. - 2016



**BENCHMARK:**  
MONUMENT 001196.3U3491

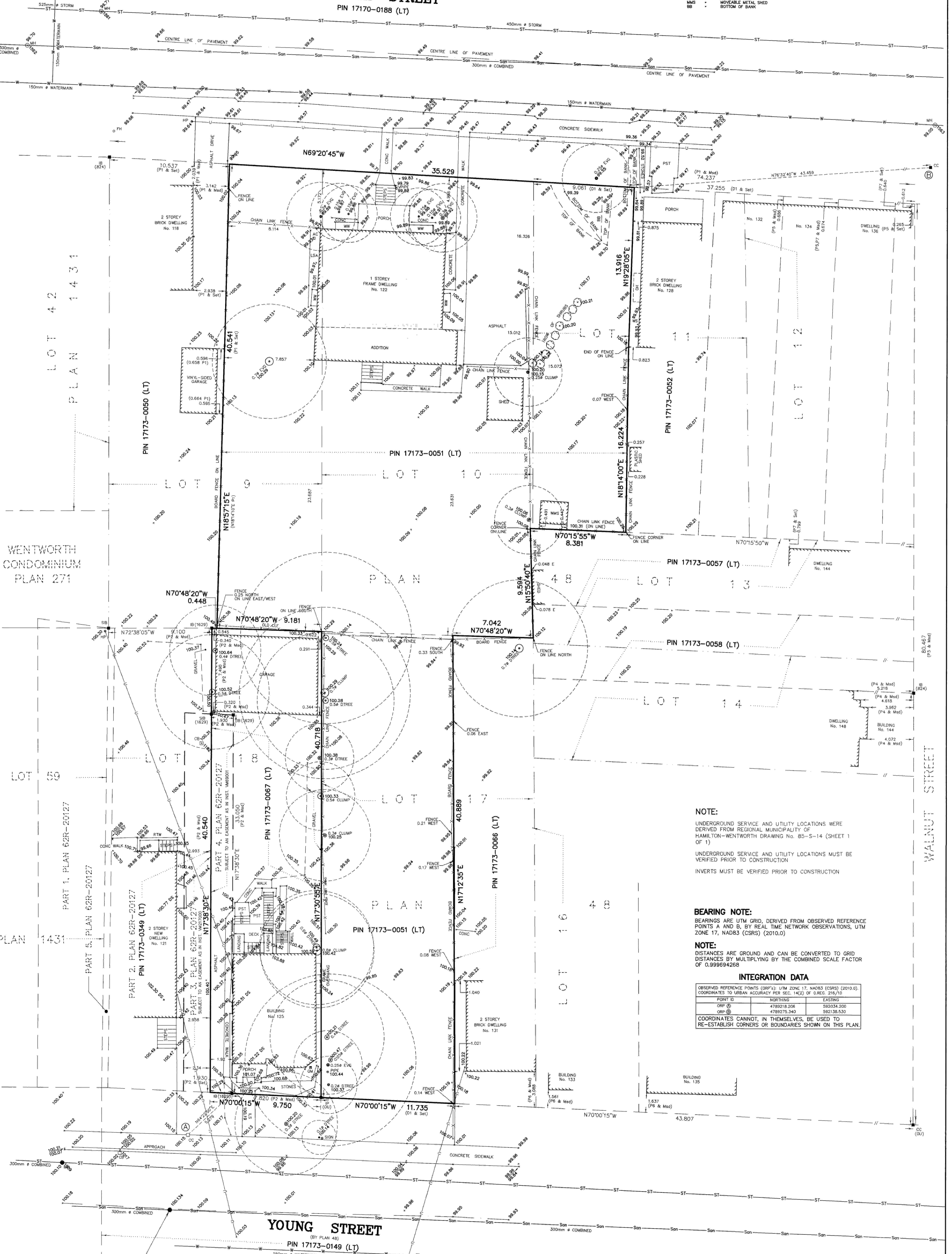
POST OFFICE ON THE SOUTHWEST  
CORNER OF KING STREET EAST AND  
JOHN STREET SOUTH, TABLET IN  
THE EAST STONE FOUNDATION WALL,  
8.26 M SOUTH OF THE  
NORTHEAST CORNER, 2.71 M BELOW A  
WINDOW SILL AND 42 CM ABOVE  
SIDEWALK LEVEL.

ELEVATION: 96.871 metres CGVD-1928:1978

**LEGEND:**

- MONUMENT SET
- MONUMENT FOUND
- IRON BAR
- PLASTIC BAR
- IRON PIPE
- PLASTIC PIPE
- CUT CROSS
- STANDARD IRON BAR
- CUT CROSS
- CUT CROSS
- A.T. McLAREN, O.L.S.
- LEASING
- CHAIN LINK FENCE
- LANDSCAPED AREA
- INTER-LOCKING STONE
- PAVS STONES
- MANHOLE
- CASTOR BASIN
- FIRE HYDRANT
- WINDOW WELL
- WINDOW SILL
- MOOR SILL
- GARAGE FLOOR
- DIAMETER
- EVERGREEN
- DECIDUOUS TREE
- VERTICAL PIPE
- GAS METER
- CONCRETE
- AIR CONDITIONER
- OVERHANG
- HYDRO PIPE
- OVERHEAD UTILITIES
- RETAINING WALL
- MOVABLE METAL SHED
- BOTTOM OF BANK

**AUGUSTA STREET**  
PIN 17170-0188 (LT)



**NOTE:**  
UNDERGROUND SERVICE AND UTILITY LOCATIONS WERE  
DERIVED FROM REGIONAL MUNICIPALITY OF  
HAMILTON-WENTWORTH DRAWING No. 85-S-14 (SHEET 1  
OF 1)  
UNDERGROUND SERVICE AND UTILITY LOCATIONS MUST BE  
VERIFIED PRIOR TO CONSTRUCTION  
INVERTS MUST BE VERIFIED PRIOR TO CONSTRUCTION

**BEARING NOTE:**  
BEARINGS ARE UTM GRID, DERIVED FROM OBSERVED REFERENCE  
POINTS A AND B, BY REAL TIME NETWORK OBSERVATIONS, UTM  
ZONE 17, NAD83 (CSRS) (2010.0)

**NOTE:**  
DISTANCES ARE GROUND AND CAN BE CONVERTED TO GRID  
DISTANCES BY MULTIPLYING BY THE COMBINED SCALE FACTOR  
OF 0.999694268

**INTEGRATION DATA**

POINT ID	NORTHING	EASTING
ORF @	4789218.206	592034.200
ORF @	4789275.340	592136.530

COORDINATES CANNOT, IN THEMSELVES, BE USED TO  
RE-ESTABLISH CORNERS OR BOUNDARIES SHOWN ON THIS PLAN.

**SITE BENCH MARK**  
MANHOLE  
ELEV. 100.134

**METRIC NOTE**  
DISTANCES AND COORDINATES  
SHOWN ON THIS PLAN ARE IN  
METRES AND CAN BE  
CONVERTED TO FEET  
BY DIVIDING BY 0.3048

**SURVEYOR'S CERTIFICATE:**  
I CERTIFY THAT  
1. THIS SURVEY AND PLAN ARE CORRECT AND IN ACCORDANCE WITH  
THE SURVEY ACT, THE SURVEYORS ACT AND THE REGULATIONS  
MADE UNDER THEM  
2. THE SURVEY WAS COMPLETED ON THE 10th DAY OF NOVEMBER, 2016

DATE: NOVEMBER 14, 2016  
S. DAN McLAREN, O.L.S.

© S.D. McLAREN, O.L.S. - 2016. NO PERSON MAY COPY  
REPRODUCE, DISTRIBUTE OR ALTER THIS PLAN IN WHOLE OR IN  
PART WITHOUT THE WRITTEN PERMISSION OF S.D. McLAREN, O.L.S.

**A.T. McLaren Limited**  
1555-1100 KING STREET WEST  
HAMILTON, ONTARIO, L8N 2B9  
PHONE: (905) 527-5559 FAX: (905) 527-0032

Drawn: DG  
Checked: RRB  
Date: 11/15/16  
Scale: 1:150  
Dwg No: 33156