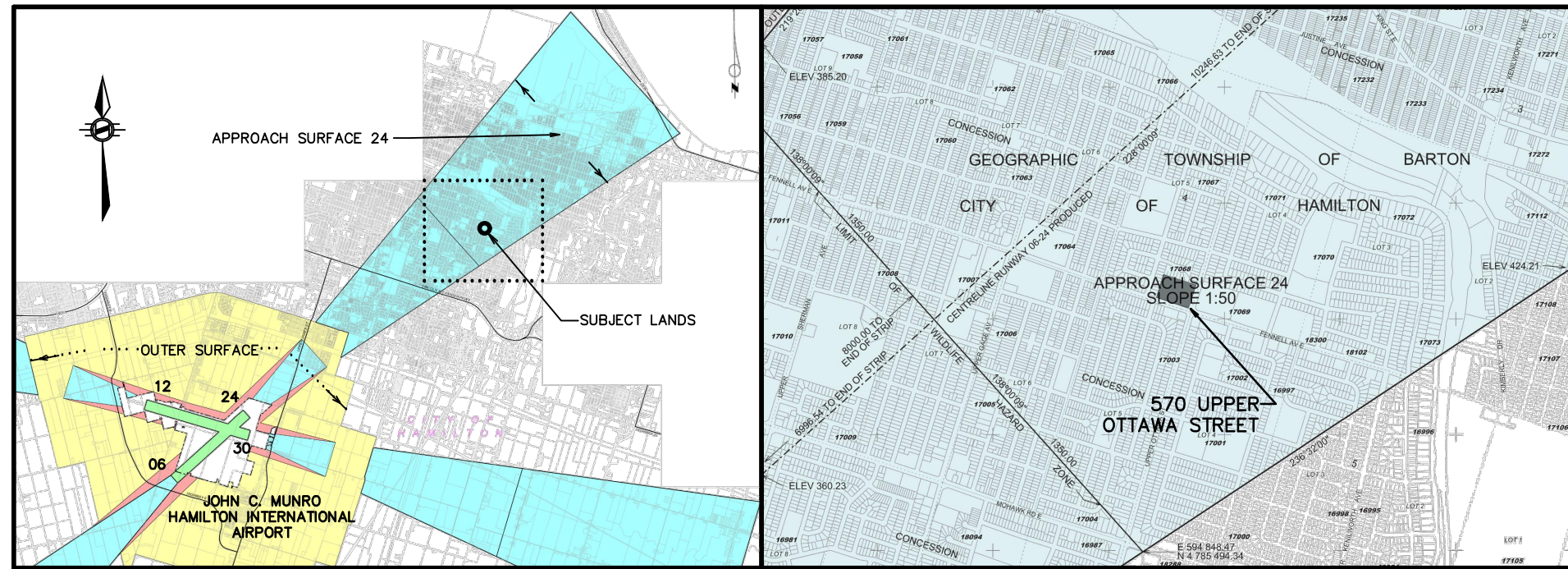
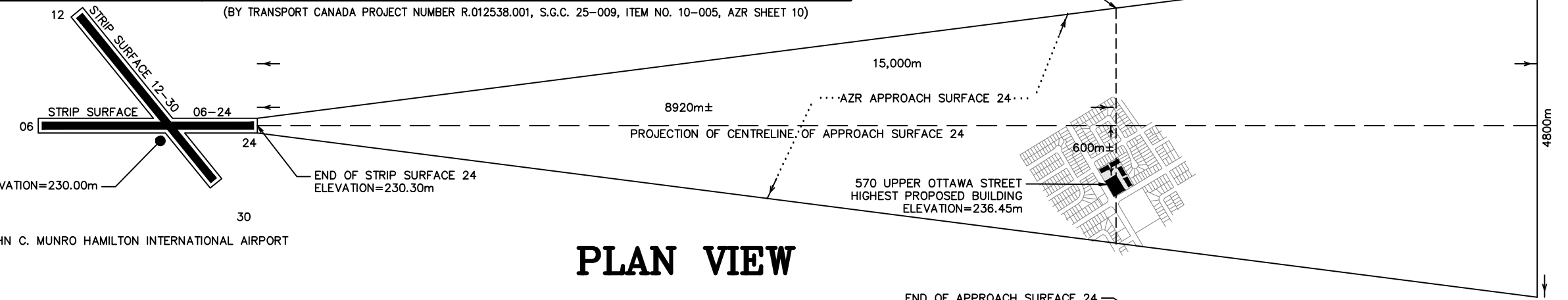


SKETCH SHOWING ELEVATION LIMITS
 FOR PROJECTION OF
HAMILTON AIRPORT
APPROACH SURFACE No. 24
 IN THE
CITY OF HAMILTON
 R.A. McLAREN, O.L.S. - 2022



KEY MAP
 N.T.S.



PLAN VIEW

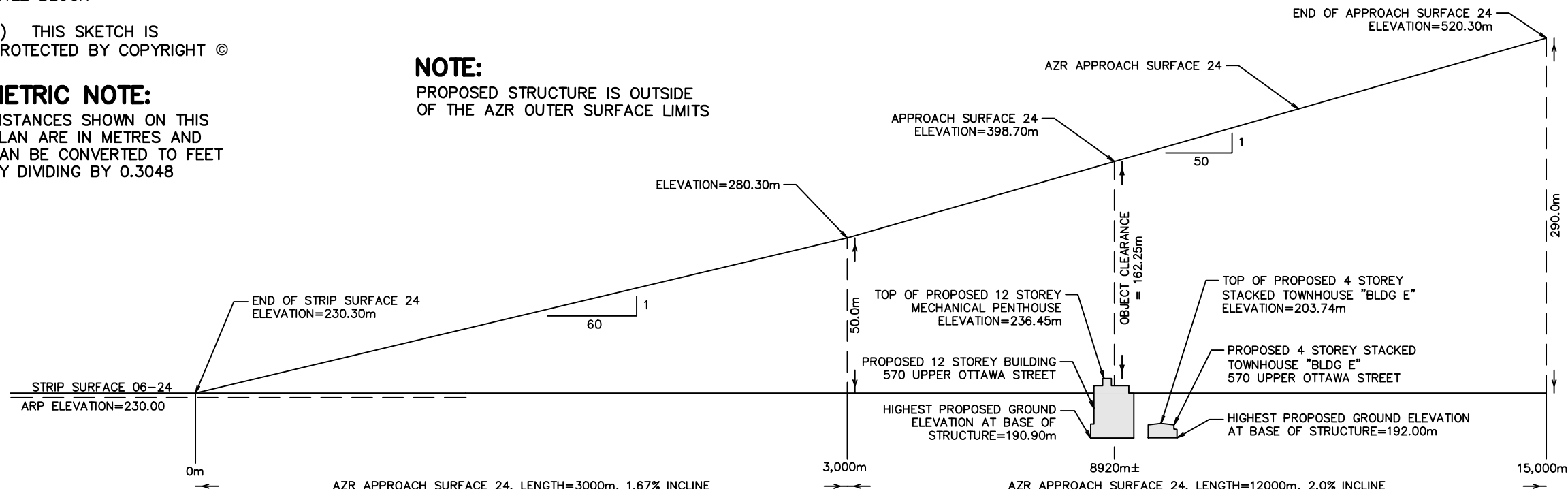
CAUTION:
 A) THIS IS NOT A PLAN OF SURVEY AND SHALL NOT BE USED EXCEPT FOR THE PURPOSE INDICATED IN THE TITLE BLOCK
 B) THIS SKETCH IS PROTECTED BY COPYRIGHT ©

METRIC NOTE:
 DISTANCES SHOWN ON THIS PLAN ARE IN METRES AND CAN BE CONVERTED TO FEET BY DIVIDING BY 0.3048

NOTE:
 PROPOSED STRUCTURE IS OUTSIDE OF THE AZR OUTER SURFACE LIMITS

ELEVATION NOTE:
 ELEVATIONS SHOWN ON THIS PLAN ARE RELATED TO GEODETIC DATUM (CGVD-1928:78), AND ARE DERIVED FROM BENCH MARK No. 0011965U098: ELEVATION = 191.445m
 PROPOSED GRADES TAKEN FROM GRADING PLAN BY ODAN DETECH CONSULTING ENGINEERS.

AZR = JOHN C. MUNRO HAMILTON INTERNATIONAL AIRPORT ZONING REGULATIONS SOR/2017-200
 ARP = AIRPORT REFERENCE POINT



PROFILE VIEW

© R.A. McLAREN, O.L.S. - 2022. NO PERSON MAY COPY REPRODUCE, DISTRIBUTE OR ALTER THIS PLAN IN WHOLE OR IN PART WITHOUT THE WRITTEN PERMISSION OF R.A. McLAREN, O.L.S.

A.T. McLaren Limited
 LEGAL AND ENGINEERING SURVEYS
 69 JOHN STREET SOUTH, SUITE 230
 HAMILTON, ONTARIO, L8N 2B9
 PHONE (905) 527-8559 FAX (905) 527-0032

Drawn JC	Checked JM	Crew Chief -	Scale NTS	Dwg.No. 37182-SK
-------------	---------------	-----------------	--------------	---------------------