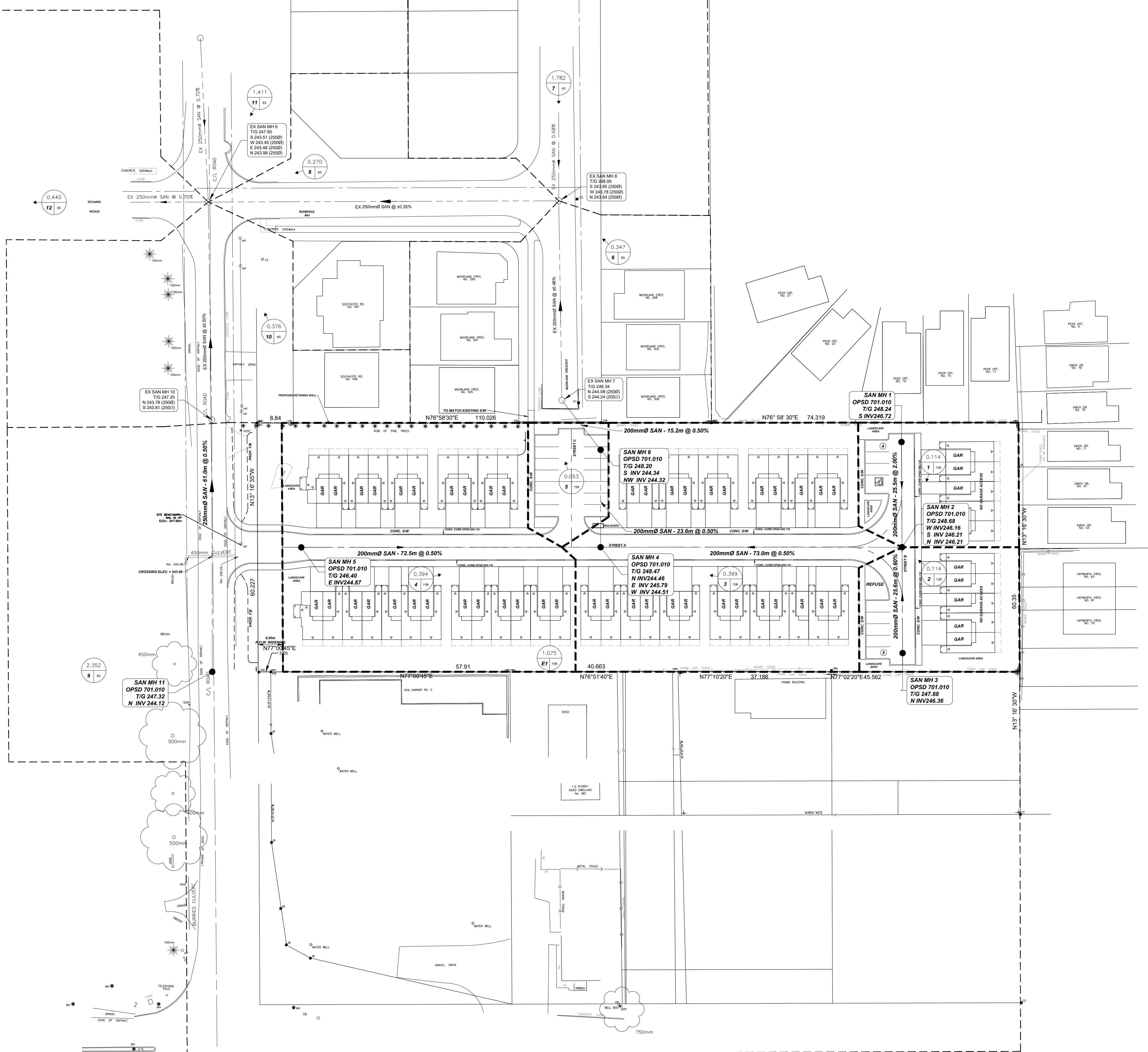


FOR CONTINUATION OF SANITARY DRAINAGE AREA SEE DWG: K-08-019



LEGEND

- EXISTING SANITARY
- PROPOSED SANITARY
- SAN
- EXISTING SANITARY MH
- PROPOSED SANITARY MH
- PLUG
- PROPOSED PLUG
- PROPOSED SILT FENCE
- ROADWAY RESTORATION
- BOULEVARD RESTORATION
- 0.205 AREA (HECTARES)
- 106 POPULATION DENSITY
- DRAINAGE AREA NO.



KEY PLAN N.T.S.

BENCHMARK NOTE:
 ELEVATION = 247.650 (CGVD-1928:1978)
 MONUMENT: 00819890294
 SIB WITH BRASS CAP - CONTROL POINT IS LOCATED ON THE SOUTHEAST CORNER OF HIGHWAY 53 AND SOUTHCOTE ROAD.

SITE BENCHMARK:
 ELEVATION = 247.50m
 NAIL IN HYDRO POLE - WEST OF SUBJECT PROPERTY

- GENERAL NOTES:**
- TENDERER SHALL SATISFY THEMSELVES AS TO THE NATURE OF THE GROUND AND BID ACCORDINGLY.
 - ALL ROCK LINE INDICATIONS SHOWN ON THE PLAN MUST BE VERIFIED BY THE CONTRACTOR.
 - CONTRACTOR SHALL VERIFY LOCATIONS AND INVERTS OF ALL EXISTING SANITARY AND STORM SEWERS AND WATERMANS, PRIVATE DRAINS AND WATER SERVICES, GAS MAINS, CABLE TV, HYDRO AND TELEPHONE DUCTS ETC AT START OF CONSTRUCTION.

NO.	DATE:	DESCRIPTION:
0	2022-12-21	FIRST SUBMISSION

REVISIONS	

LandSmith ENGINEERING & CONSULTING LTD.
 1059 UPPER JAMES STREET, SUITE 207
 HAMILTON, ON L9C 3A6
 ANDREW@LANDSMITH.CECOM
 289-309-3632

CLIENT: SOUTHCOTE HILLS INC.

MUNICIPALITY: CITY OF HAMILTON

PROJECT NAME: 509 SOUTHCOTE ROAD

TITLE: SANITARY DRAINAGE AREA PLAN

SCALE: 1:500	DATE: 2022-12-21
CHECKED BY: AS	DESIGNED BY: AS
DWG No: 22063RDX	SHEET No: 04

- NOTES RE: SEPARATION DISTANCES:**
- MINIMUM HORIZONTAL SEPARATION BETWEEN WATER SERVICES / MAINS AND SEWER DRAINS AND MUNICIPAL SEWER MAINS SHALL BE 2.5M MEASURED FROM THE CLOSEST PIPE EDGE TO THE CLOSEST PIPE EDGE.
 - VERTICAL SEPARATION WHERE WATER SERVICE / MAIN PASSES OVER A SEWER DRAIN OR MUNICIPAL SEWER MAIN MUST BE A MINIMUM 0.25M UNLESS GREATER SEPARATION IS REQUIRED TO PROVIDE PROPER BEDDING AND STRUCTURAL SUPPORT. WATER SERVICES/MAINS PASSING UNDER SEWER DRAINS OR MUNICIPAL SEWER DRAINS MUST HAVE A SEPARATION OF 0.50M BETWEEN THE INVERT OF THE SEWER MAIN/DRAIN AND THE CROWN OF THE WATER SERVICE/MAIN.

APPROVAL OF THIS DRAWING IS FOR MATERIAL ACCEPTABILITY AND COMPLIANCE WITH MUNICIPAL AND PROVINCIAL SPECIFICATIONS AND STANDARDS ONLY. APPROVAL AND INSPECTION BY THE CITY OF THE WORKS DOES NOT CERTIFY THE LINE AND GRADE OF THE WORKS AND IT IS THE OWNER'S RESPONSIBILITY TO HAVE THEIR ENGINEER CERTIFY THIS ACCORDINGLY.

- NOTES:**
- LOCATIONS UNDERGROUND SERVICES ARE APPROXIMATE AND MUST BE FIELD VERIFIED PRIOR TO CONSTRUCTION.
 - ANY DISCREPANCIES BETWEEN SERVICE LOCATIONS AND THESE ENGINEERING DRAWINGS MUST BE BROUGHT TO THE ATTENTION OF THE PROJECT ENGINEER.