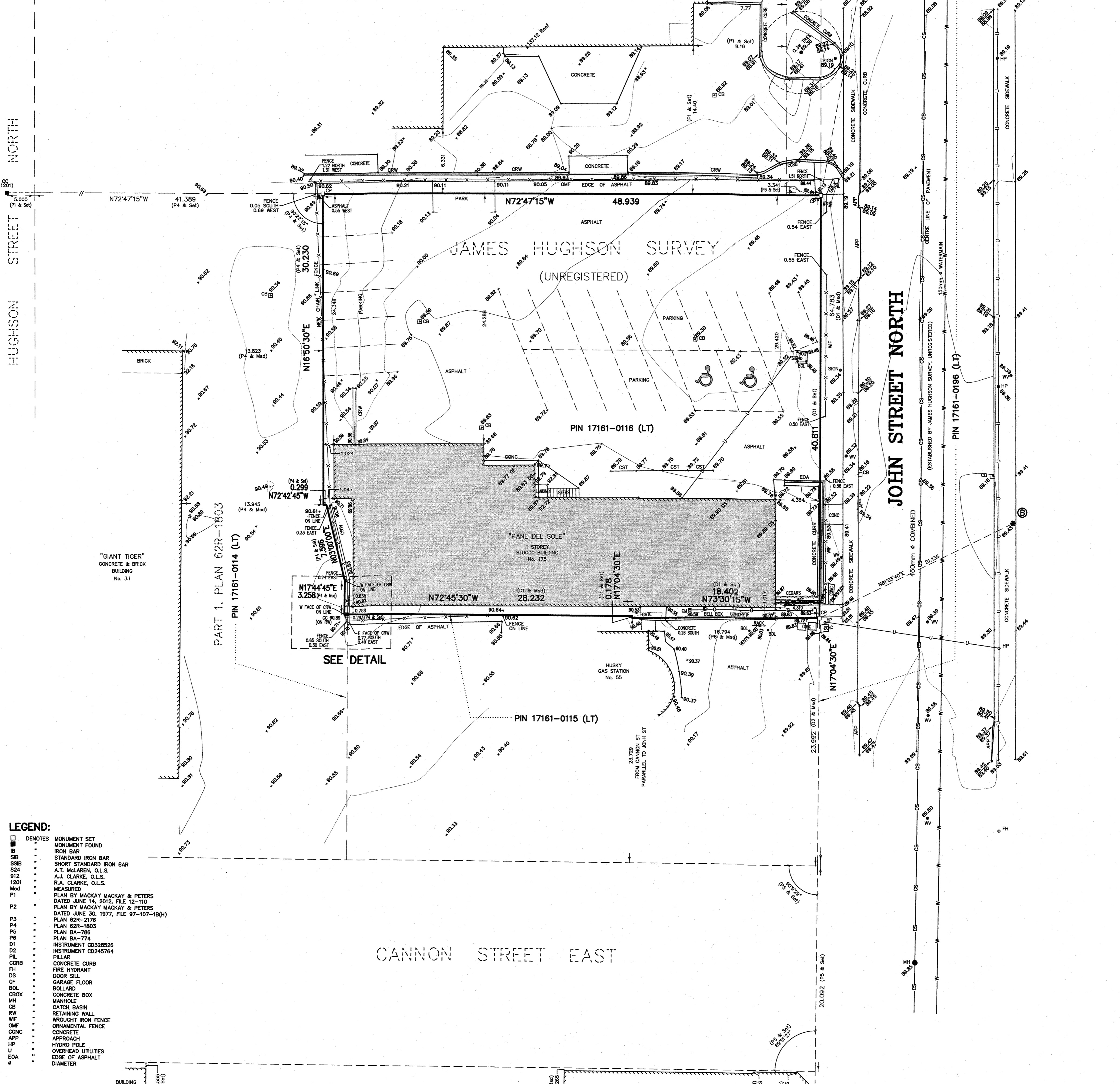
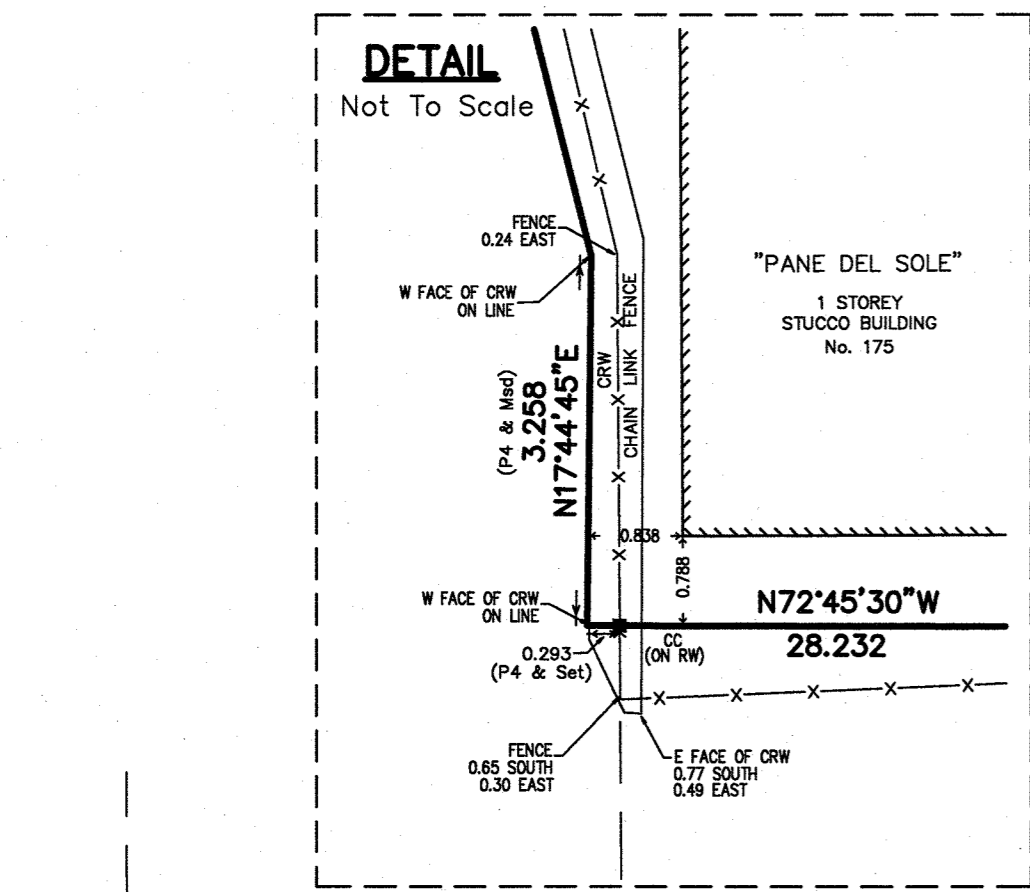
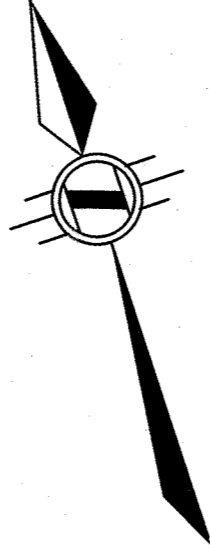


TOPOGRAPHIC SURVEY
 OF PART OF
**BLOCK BETWEEN HUGHSON, JOHN,
 ROBERT AND CANNON STREETS**
JAMES HUGHSON SURVEY
 (UNREGISTERED)
 IN THE
CITY OF HAMILTON
 SCALE 1:200 METRIC
 S.D. McLAREN, O.L.S. - 2021



- LEGEND:**
- DENOTES MONUMENT SET
 - MONUMENT FOUND
 - IS IRON BAR
 - SIB STANDARD IRON BAR
 - SSIB SHORT STANDARD IRON BAR
 - 824 A.T. McLAREN, O.L.S.
 - 912 A.J. CLARKE, O.L.S.
 - 1201 R.A. CLARKE, O.L.S.
 - M&C MEASURED
 - P1 PLAN BY MACKAY MACKAY & PETERS DATED JUNE 14, 2012, FILE 12-110
 - P2 PLAN BY MACKAY MACKAY & PETERS DATED JUNE 30, 1977, FILE 97-107-18(h)
 - P3 PLAN 62R-2176
 - P4 PLAN 62R-1803
 - P5 PLAN BA-795
 - P6 PLAN BA-774
 - D1 INSTRUMENT CD328526
 - D2 INSTRUMENT CD245764
 - PIL PILLAR
 - CCRB CONCRETE CURB
 - FH FIRE HYDRANT
 - DS DOOR SILL
 - GF GARAGE FLOOR
 - BOL BOLLARD
 - CBX CONCRETE BOX
 - MH MANHOLE
 - CB CATCH BASIN
 - RW RETAINING WALL
 - WIF WROUGHT IRON FENCE
 - OMF ORNAMENTAL FENCE
 - CONC CONCRETE
 - APP APPROACH
 - HP HYDRO POLE
 - EDA OVERHEAD UTILITIES
 - φ DIAMETER

NOTE:
 FOR COMPARISON PURPOSES THE BEARINGS ON P1 HAVE BEEN ROTATED 0°10'00" COUNTERCLOCKWISE TO CONVERT TO GRID BEARING.

BEARING NOTE:
 BEARINGS ARE UTM GRID, DERIVED FROM OBSERVED REFERENCE POINTS A AND B, BY REAL TIME NETWORK OBSERVATIONS, UTM ZONE 17, NAD83 (CSRS) (2010.0)

NOTE:
 DISTANCES ARE GROUND AND CAN BE CONVERTED TO GRID BY MULTIPLYING BY THE COMBINED SCALE FACTOR OF 0.999967132

NOTE:
 UNDERGROUND SERVICE AND UTILITY LOCATIONS WERE DERIVED FROM CITY OF HAMILTON DRAWING 68-H-13 (SHEET 1 OF 1)

UNDERGROUND SERVICE AND UTILITY LOCATIONS MUST BE VERIFIED PRIOR TO CONSTRUCTION

INVERTS MUST BE VERIFIED PRIOR TO CONSTRUCTION

INTEGRATION DATA

POINT ID	NORTHING	EASTING
ORP A	4790298.143	592267.861
ORP B	4790475.037	592310.735

COORDINATES CANNOT, IN THEMSELVES, BE USED TO RE-ESTABLISH CORNERS OR BOUNDARIES SHOWN ON THIS PLAN.

BENCHMARK:
 MONUMENT 07720100048

MONUMENT IS LOCATED AT BEASLEY PARK, ABOUT 50m SOUTH OF THE CENTRELINE OF CANNON STREET EAST AND ABOUT 24m EAST OF THE CENTRELINE OF ELGIN STREET

ELEVATION: 87.507 metres CGVD-1928:1978

METRIC NOTE:
 DISTANCES AND COORDINATES SHOWN ON THIS PLAN ARE IN METRES AND CAN BE CONVERTED TO FEET BY DIVIDING BY 0.3048

SURVEYOR'S CERTIFICATE:

I CERTIFY THAT
 1. THIS SURVEY AND PLAN ARE CORRECT AND IN ACCORDANCE WITH THE SURVEYORS ACT, THE SURVEYORS REGULATIONS AND THE REGULATIONS MADE UNDER THEM
 2. THE SURVEY WAS COMPLETED ON THE 25th DAY OF NOVEMBER, 2021

Dec 23, 2021

S. DAN McLAREN, O.L.S.

© S.D. McLAREN, O.L.S. - 2021. NO PERSON MAY COPY, REPRODUCE, DISTRIBUTE OR ALTER THIS PLAN IN WHOLE OR IN PART WITHOUT THE WRITTEN PERMISSION OF S.D. McLAREN, O.L.S.

A.T. McLaren Limited
 LEGAL AND ENGINEERING SURVEYS

69 JOHN STREET SOUTH, SUITE 230
 HAMILTON, ONTARIO, L9N 3S9
 PHONE (905) 527-8999 FAX (905) 527-0032

Drawn: JB
 Checked: RBM
 Date: Dec 23, 2021
 Scale: 1:200
 Dwg. No. 36814