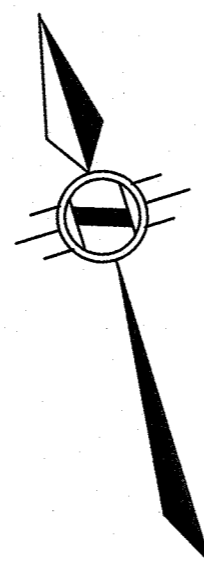


SURVEYOR'S REAL PROPERTY REPORT

PART 1, PLAN OF
LOTS 1, 2 & 3
REGISTERED PLAN 1008
IN THE
CITY OF HAMILTON

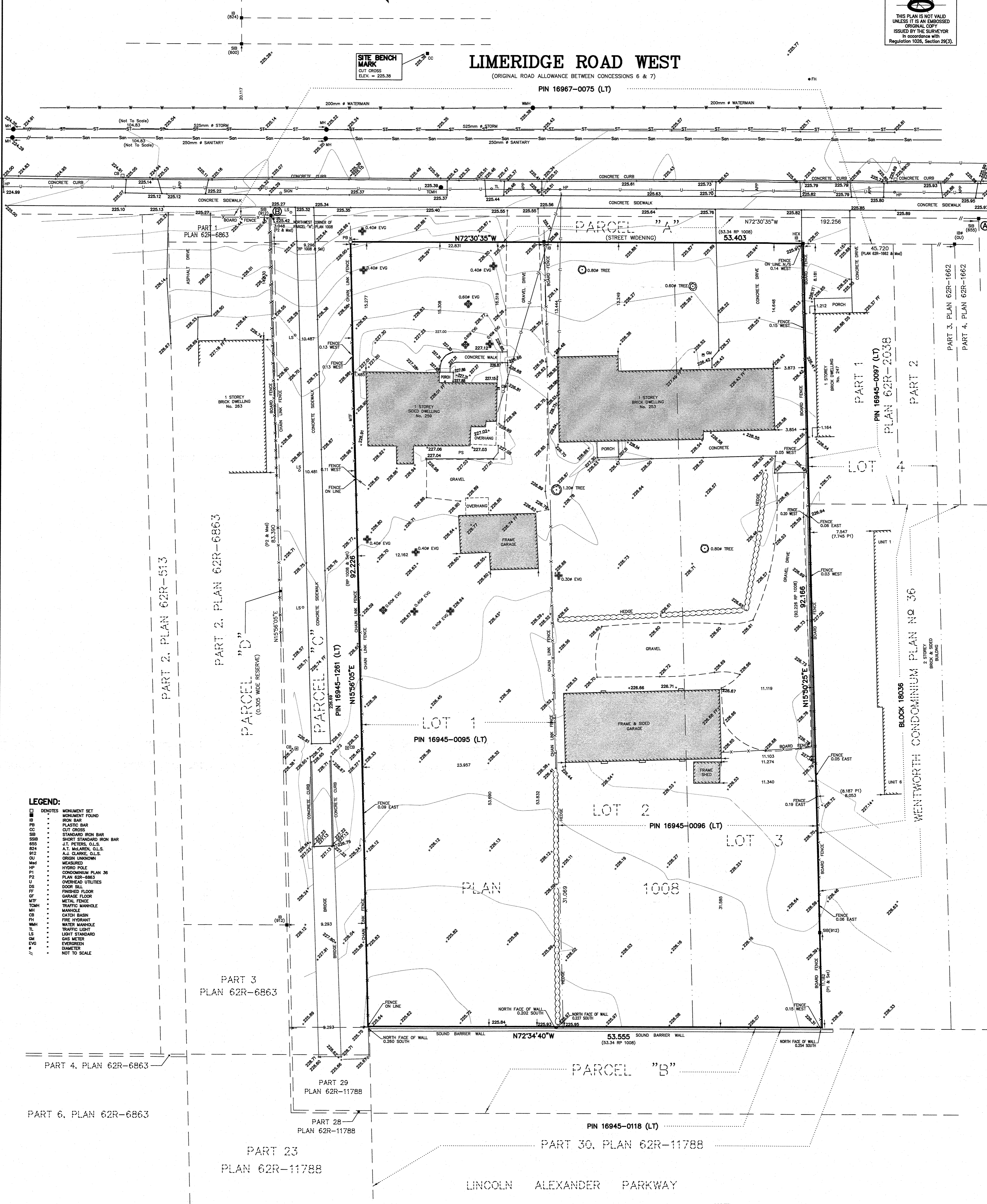
SCALE 1:200 METRIC
0 4 8 12 metres

R.A. McLAREN, O.L.S. - 2022



SURVEYOR'S REAL PROPERTY REPORT (PART 2)
LOTS 1, 2 & 3, REGISTERED PLAN 1008 AS ILLUSTRATED ON THE PLAN. THIS PLAN DOES NOT CERTIFY COMPLIANCE WITH ZONING BY-LAWS. THIS PLAN WAS PREPARED FOR LEI ZHAO

ASSOCIATION OF ONTARIO LAND SURVEYORS
PLAN SUBMISSION FORM
27312
THIS PLAN IS NOT VALID UNLESS IT IS AN EMBOSSED ORIGINAL COPY ISSUED BY THE SURVEYOR IN ACCORDANCE WITH REGULATION 1005, SECTION 22(5).



- LEGEND:**
- DENOTES MONUMENT SET
 - MONUMENT FOUND
 - IRON BAR
 - PLASTIC BAR
 - CUT CROSS
 - STANDARD IRON BAR
 - SHORT STANDARD IRON BAR
 - 655 J.T. PETERS, O.L.S.
 - 654 A.T. McLAREN, O.L.S.
 - 912 A.J. CLARKE, O.L.S.
 - GM GROUND UNKNOWN MEASURED
 - HP HYDRO POLE
 - P1 CONDOMINIUM PLAN 36
 - P2 PLAN 62R-6863
 - U OVERHEAD UTILITIES
 - DS DOOR SILL
 - FF FINISHED FLOOR
 - GF GARAGE FLOOR
 - MTF METAL FENCE
 - TMH TRAFFIC MANHOLE
 - MH MANHOLE
 - CB CATCH BASIN
 - FI FIRE HYDRANT
 - WM WATER MANHOLE
 - TL TRAFFIC LIGHT
 - LS LIGHT STANDARD
 - GM GAS METER
 - EVG EVERGREEN
 - DIAMETER
 - NOT TO SCALE

BEARING NOTE:
BEARINGS ARE UTM GRID, DERIVED FROM OBSERVED REFERENCE POINTS A AND B, BY REAL TIME NETWORK OBSERVATIONS, UTM ZONE 17, NAD83 (CSRS) (2010.0)

NOTE:
DISTANCES ARE GROUND AND CAN BE CONVERTED TO GRID BY MULTIPLYING BY THE COMBINED SCALE FACTOR OF 0.9996689

INTEGRATION DATA

POINT ID	NORTHING	EASTING
ORP @	4786294.436	189729.070
ORP @	4786152.587	588541.763

COORDINATES CANNOT, IN THEMSELVES, BE USED TO RE-ESTABLISH CORNERS OR BOUNDARIES SHOWN ON THIS PLAN.

BENCHMARK:
MONUMENT 0772090019
ROUND IRON BAR WITH BRASS CAP
17.15m NORTH OF THE CENTRELINE OF KENDALE COURT & 41.9m EAST OF THE SOUTHEAST CORNER OF APARTMENT BUILDING No. 21
ELEVATION: 225.436 metres COVD-1928-1978

METRIC NOTE:
DISTANCES AND COORDINATES SHOWN ON THIS PLAN ARE IN METRES AND CAN BE CONVERTED TO FEET BY DIVIDING BY 0.3048

SURVEYOR'S CERTIFICATE:
I, THE SURVEYOR, AND PLAN ARE CORRECT AND IN ACCORDANCE WITH THE SURVEYORS ACT AND THE REGULATIONS MADE UNDER THEM.
25 MAY 22
DATE
R.A. McLAREN, O.L.S.

NOTE:
UNDERGROUND SERVICE AND UTILITY LOCATIONS WERE LOCATED BY CITY OF HAMILTON DRAWING No. 70-S-154 (SHEET 1 OF 1)
UNDERGROUND SERVICE AND UTILITY LOCATIONS MUST BE VERIFIED PRIOR TO CONSTRUCTION
INVERTS MUST BE VERIFIED PRIOR TO CONSTRUCTION

A.T. McLaren Limited
LEGAL AND ENGINEERING SURVEYS
69 JOHN STREET SOUTH, SUITE 230
HAMILTON, ONTARIO, L8N 2B9
PHONE (905) 527-8559 FAX (905) 527-0032
Scale 1:200 Dwg No. 36860