

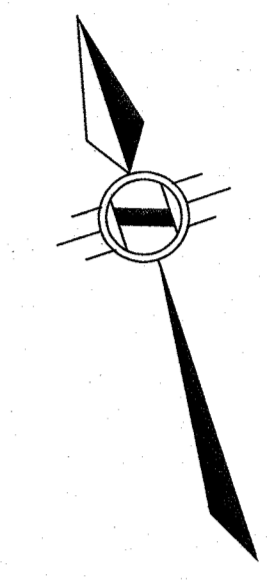
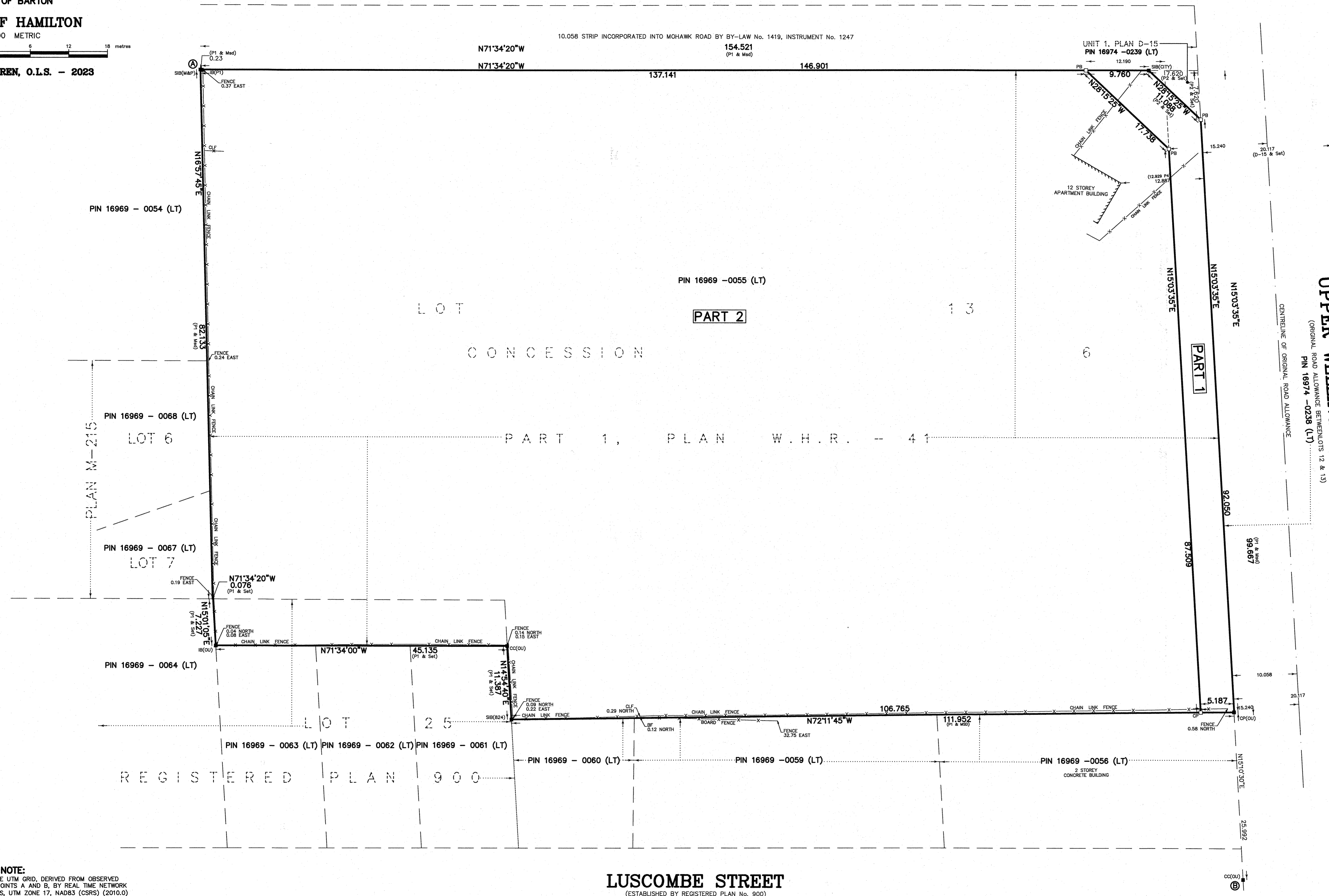
PLAN OF SURVEY
 OF PART OF
LOT 25
REGISTERED PLAN 900
 AND OF PART OF
LOT 13
CONCESSION 6
 GEOGRAPHIC
TOWNSHIP OF BARTON
 IN THE
CITY OF HAMILTON
 SCALE 1:300 METRIC

R.A. McLaren, O.L.S. - 2023

MOHAWK ROAD
 (ORIGINAL ROAD ALLOWANCE BETWEEN CONCESSIONS 5 AND 6)
 PIN 17022 -0282 (LT)

SCHEDULE			
PART	LOT	PLAN/CON	PIN
1	PART OF LOT 13	CONCESSION 6	ALL OF PIN 16969 - 0055 (LT)
2	PART OF LOT 25	REGISTERED PLAN 900	

PLAN 62 R-
 RECEIVED AND DEPOSITED
 Date _____
 REPRESENTATIVE FOR LAND REGISTRAR FOR THE LAND TITLES DIVISION OF WENTWORTH (No. 62)
 I REQUIRE THIS PLAN TO BE DEPOSITED UNDER THE LAND TITLES ACT.
 Date 02 JUN 2023
 ROB A. McLaren, O.L.S.



BEARING NOTE:
 BEARINGS ARE UTM GRID, DERIVED FROM OBSERVED REFERENCE POINTS A AND B, BY REAL TIME NETWORK OBSERVATIONS, UTM ZONE 17, NAD83 (CSRS) (2010.0)

NOTE:
 DISTANCES ARE GROUND AND CAN BE CONVERTED TO GRID BY MULTIPLYING BY THE COMBINED SCALE FACTOR OF 0.9996758818.

INTEGRATION DATA

POINT ID	NORTHING	EASTING
CRP @	4786603.065	591445.303
CRP @	4786430.866	591559.165

COORDINATES CANNOT, IN THEMSELVES, BE USED TO RE-ESTABLISH CORNERS OR BOUNDARIES SHOWN ON THIS PLAN.

- LEGEND:**
- DENOTES MONUMENT SET
 - MONUMENT FOUND
 - IB IRON BAR
 - FB PLASTIC BAR
 - CC CUT CROSS
 - CP CONCRETE PIN
 - SB STANDARD IRON BAR
 - SSB SHORT STANDARD IRON BAR
 - 824 A.T. McLAREN, O.L.S.
 - CITY CITY OF HAMILTON
 - MAP MACKAY, MACKAY & PETERS LTD., O.L.S.
 - CU ORIGINAL UNCONFINED
 - Md MEASURED
 - P1 PLAN W.H.R.-41
 - P2 PLAN 62R-3985

METRIC NOTE:
 DISTANCES AND COORDINATES SHOWN ON THIS PLAN ARE IN METRES AND CAN BE CONVERTED TO FEET BY DIVIDING BY 0.3048

SURVEYOR'S CERTIFICATE
 I CERTIFY THAT:
 1. THIS SURVEY AND PLAN ARE CORRECT AND IN ACCORDANCE WITH THE SURVEYORS ACT, THE SURVEYORS REGULATION AND THE REGULATIONS MADE UNDER THEM.
 2. THE SURVEY WAS COMPLETED ON THE 31st DAY OF MAY, 2023.
 DATE 02 JUN 2023
 ROB A. McLaren, O.L.S.

A.T. McLaren
 LEGAL AND ENGINEERING SURVEYS
 69 JOHN STREET SOUTH, SUITE 230
 HAMILTON, ONTARIO, L8N 2B9
 PHONE (905) 527-8559 FAX (905) 527-0032