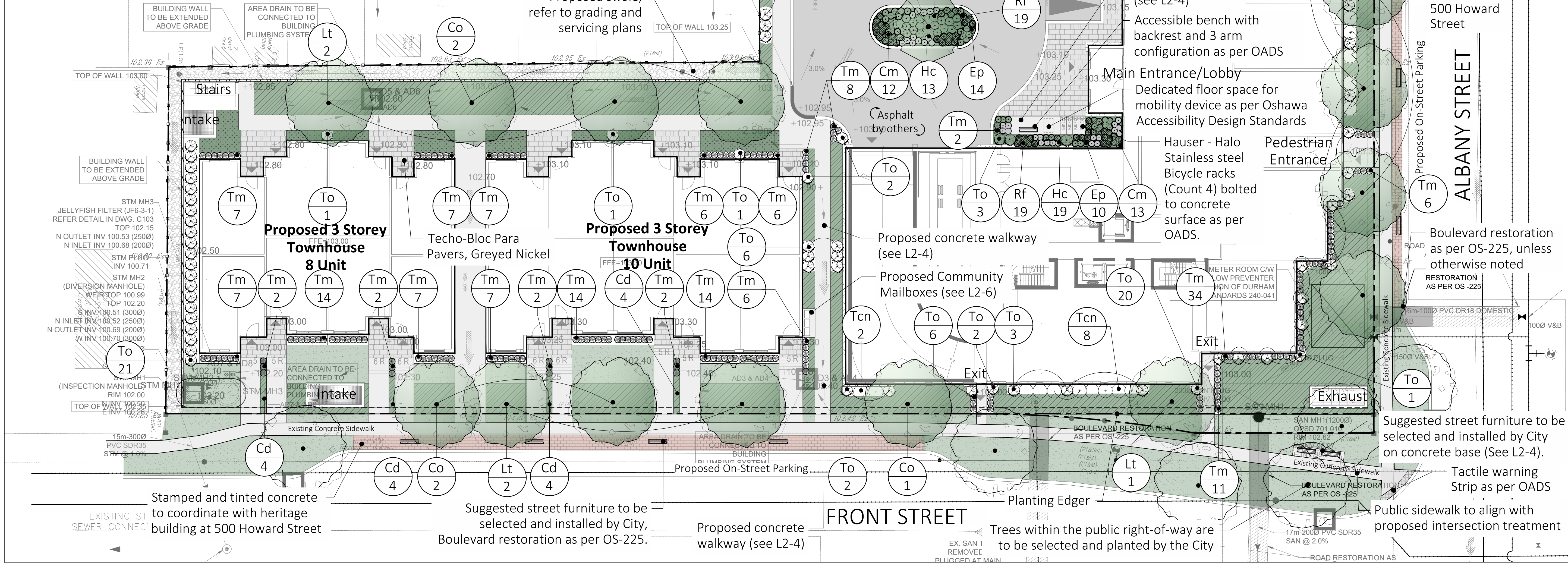
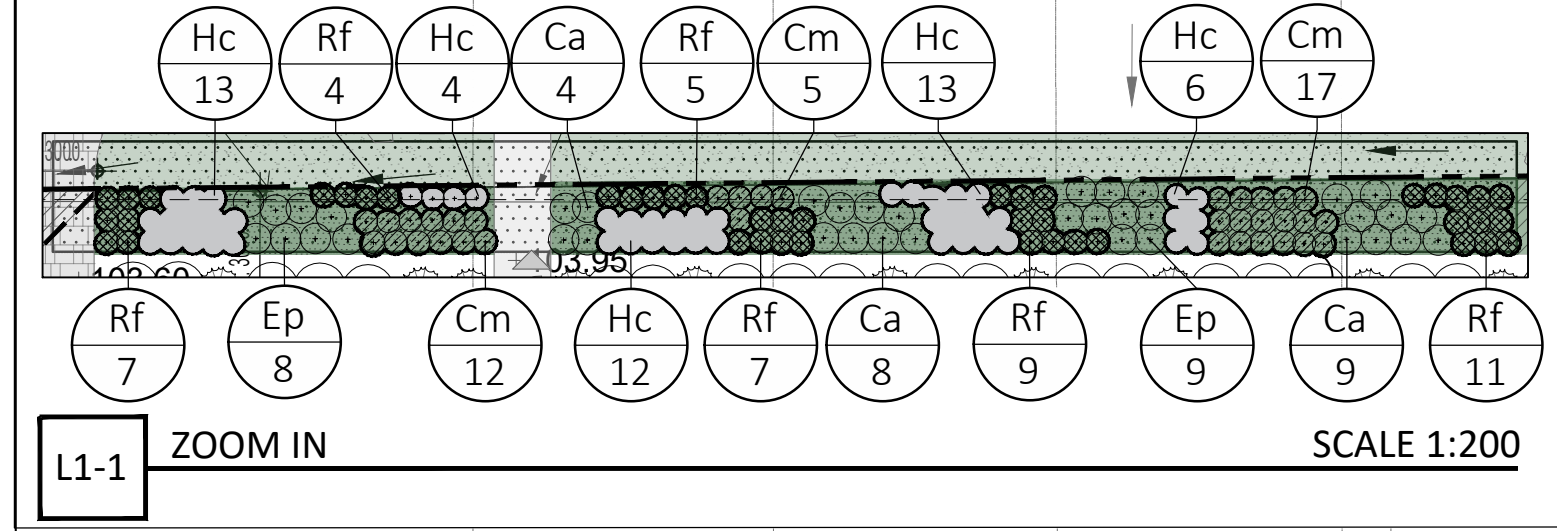


**PLANT LIST**

W.B. = Wire Basket, B.B. = Balled and Burlapped

Key Botanical Name	Common Name	Size	Qty	Cond.
<b>Note: Trees within public right-of-way are to be selected and planted by the City</b>				
<b>Site Trees - Deciduous</b>				
Cc <i>Cercis canadensis</i>	Eastern Redbud	60mm	2	W.B.
Lt <i>Liriodendron tulipifera</i>	Tulip Tree	60mm	8	W.B.
Co <i>Celtis occidentalis</i>	Common Hackberry	60mm	8	W.B.
Ta <i>Tilia americana 'American Sentry'</i>	American Sentry Linden	60mm	1	W.B.
<b>Shrubs - Coniferous</b>				
Tm <i>Taxus x media 'Densiformis'</i>	Densiformis Yew	2gal	171	3 gal
Tcn <i>Taxus cuspidata 'Nana'</i>	Dwarf Japanese Yew	2gal	44	3 gal
To <i>Thuja occidentalis 'Smaragd'</i>	Emerald Cedar	2gal	101	3 gal
<b>Perennials</b>				
Ca <i>Calamagrostis acutiflora 'Karl Foerster'</i>	Feather Reed Grass	2gal	41	1 gal
Cm <i>Carex morrowii 'Ice Dance'</i>	Ice Dance Sedge	2gal	62	1 gal
Ep <i>Echinacea purpurea</i>	Purple Coneflower	1gal	41	1 gal
Rf <i>Rudbeckia fulgida 'Goldsturm'</i>	Black-Eyed Susan	1gal	81	1 gal
<b>Groundcovers</b>				
Cd <i>Cotoneaster dammeri 'Coral Beauty'</i>	Cotoneaster dammeri 'Coral Beauty'	1gal	16	2 gal
Hc <i>Hypericum calycinum</i>	Aaron's Beard	1gal	84	1 gal

Module (a) 3.5m <sup>2</sup> Typ.	Internal Band	Exterior Band			
	Ep <i>Echinacea purpurea 'Magnus'</i>	Magnus Coneflower	9cm	5(35%)	PT
	Ac <i>Anemone canadensis</i>	Canada Anemone	1Gal	2(25%)	PT
	Am <i>Juniperus Horizontalis</i>	Creeping Juniper	1Gal	12(25%)	PT
	Ss <i>Schizachyrium scoparium</i>	Little Bluestem	1Gal	3(15%)	PT



**LEGEND:**

- Concrete
- Asphalt
- Sod
- (116.90) Proposed Elevation
- (116.90) Existing Elevation
- Existing Tree
- Proposed Vegetation

**Landscape Notes**

- Dimensions are shown in meters unless noted otherwise. Do not scale drawings.
- Contractor to review layout on site with Landscape Architect prior to commencing work.
- Contractor to verify grades and identify discrepancies prior to initiating work. Report any changes, discrepancies, or substitutions to the Landscape Architect for review prior to work.
- It is the contractor's responsibility to locate and verify all existing utilities and services prior to construction.
- Plant material support systems must be removed by the contractor at time of final acceptance. No extras will be paid to complete this work.
- Contractor to provide minimum one (1) year warranty from date accepted on all work unless otherwise specified.
- Grading and servicing shown is for information purposes. For grading and servicing information refer to engineering drawings.
- For lighting information and power distribution refer to the electrical drawings.
- Drawings are for construction only if Landscape Architects stamp is signed and dated by the Landscape Architect, and plans are approved by the Municipality.
- Tree planting within the municipal right-of-way to be undertaken by the Municipality unless noted otherwise.
- Unless otherwise specified all landscaped areas are to be sodded.
- Unless otherwise specified, all undeveloped areas shall be undisturbed and kept free and clear of debris.
- The Owner is to be aware of the Migratory Birds Convention Act, 1994. This Act is implemented by Environment Canada and the Owner is to make every effort to avoid removal of vegetation from the period of March 31st to August 31st.

**STAMP:**

**NOT FOR CONSTRUCTION**

**WHITEHOUSE URBAN DESIGN**  
LANDSCAPE ARCHITECTS & URBAN DESIGNERS

**REVISIONS / SUBMISSIONS**

NO.	DESCRIPTION	DATE:

**CLIENT:** Albany Street Investments Limited

**PROJECT TITLE:** 63 Albany Street

**SHEET TITLE:** Landscape Plan

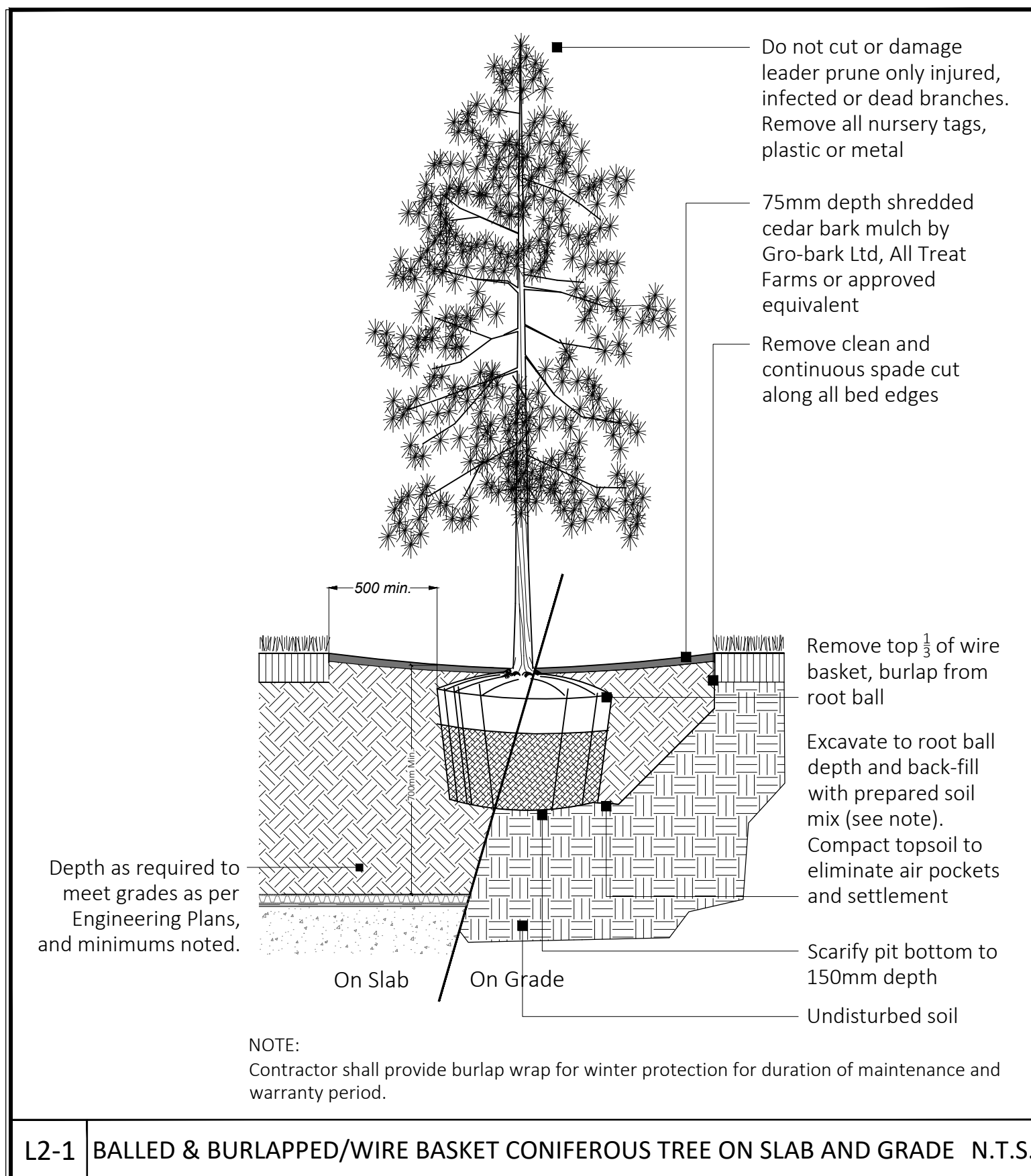
**DWG No. L1**      **DRAWN BY:** JJ

**SHEET No. 1 of 2**      **DESIGN BY:** LWS and JJ

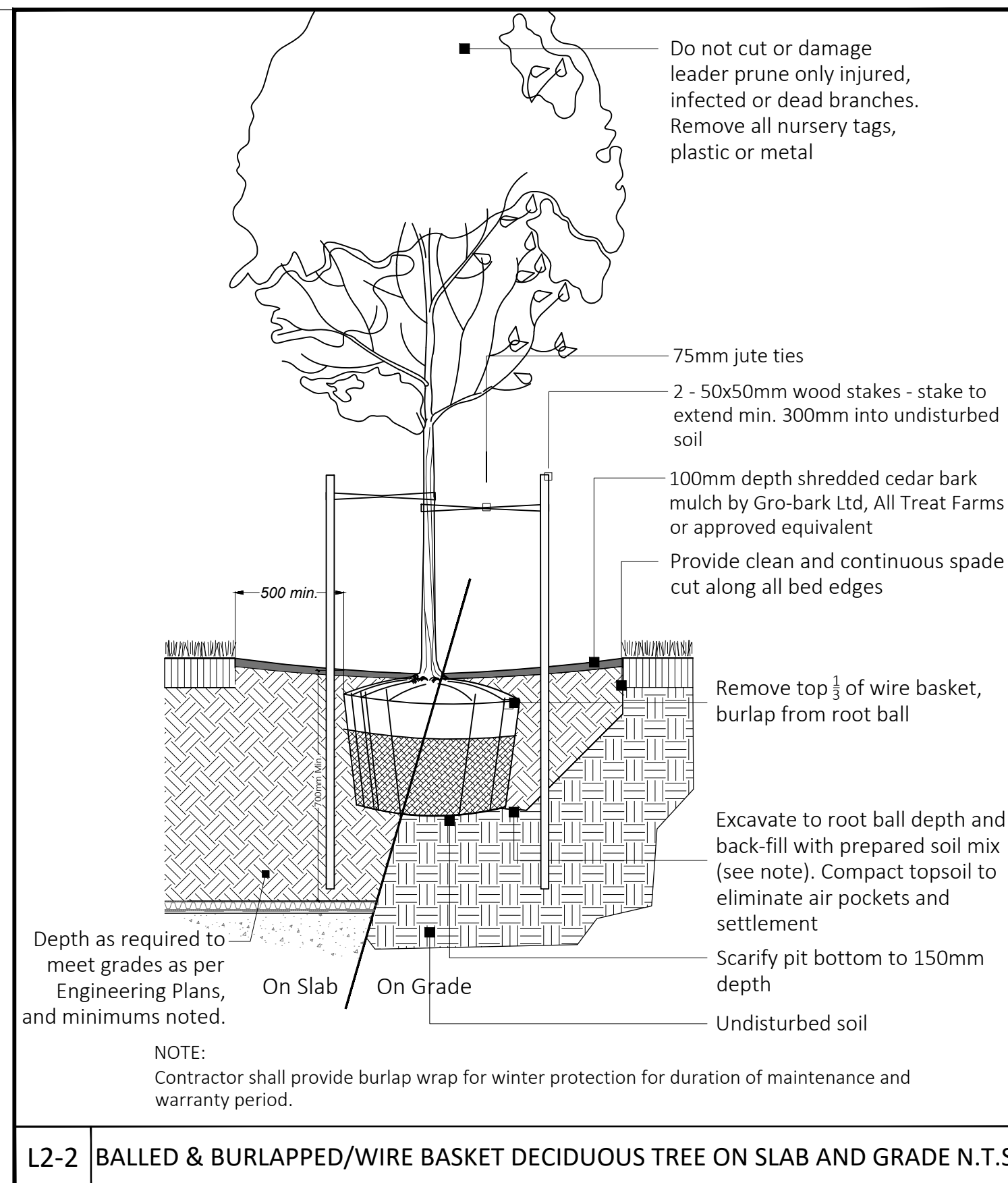
**PROJECT No: 063-21**      **CHECKED BY:** LWS

**SCALE:** As shown      **NORTH ARROW:**

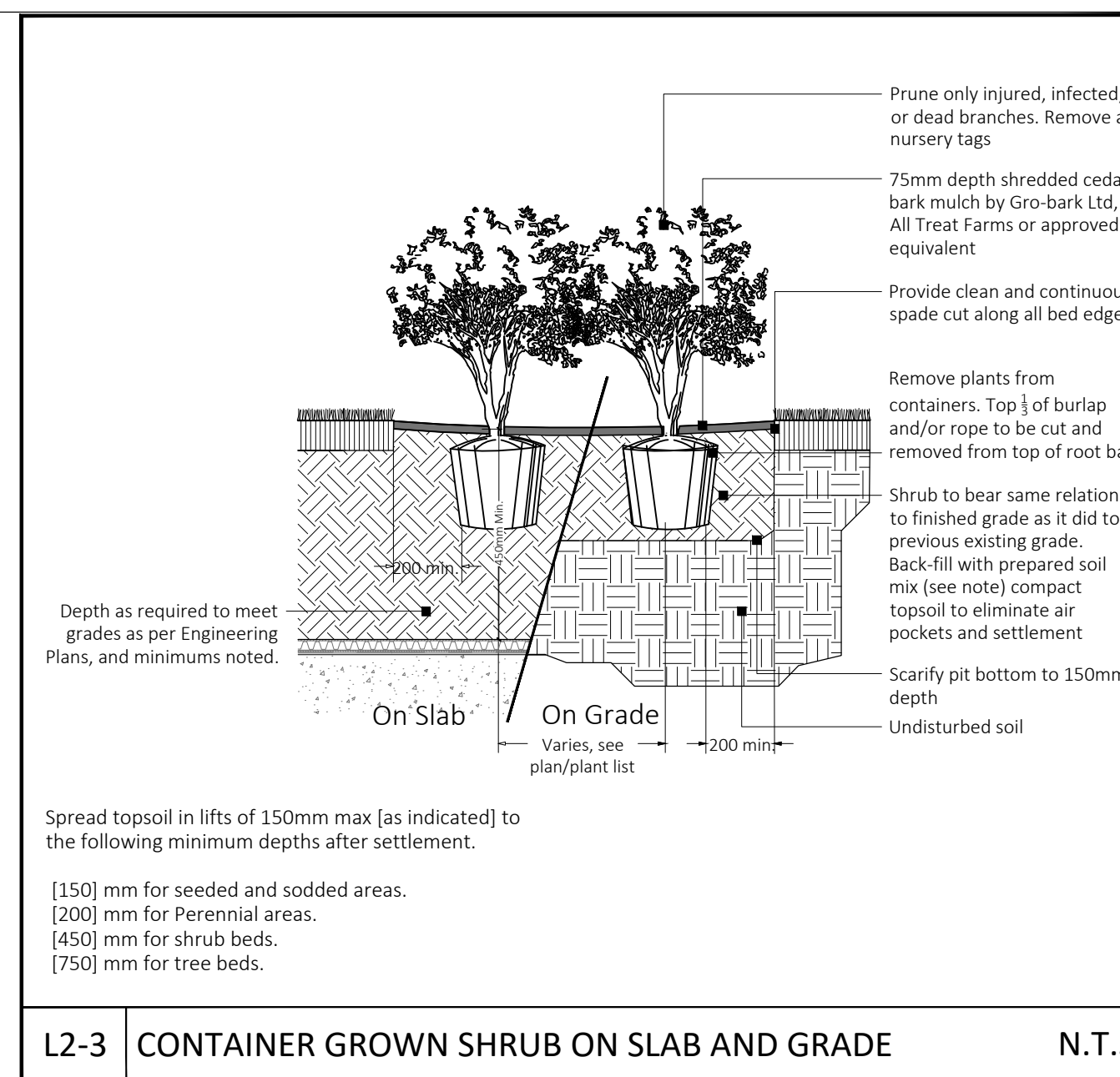
**Scale 1:200**



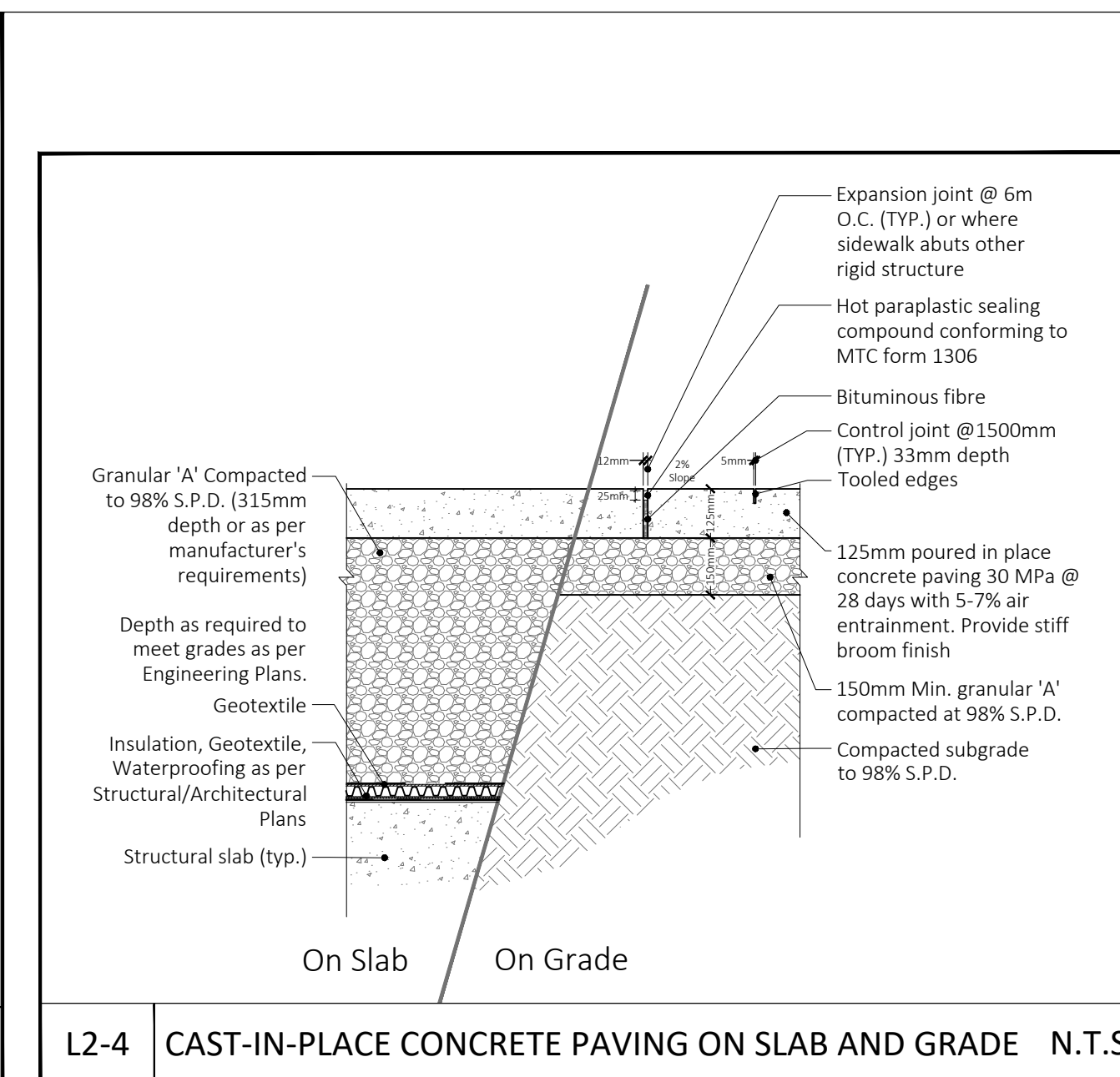
L2-1 BALLED & BURLAPPED/WIRE BASKET CONIFEROUS TREE ON SLAB AND GRADE N.T.S.



L2-2 BALLED & BURLAPPED/WIRE BASKET DECIDUOUS TREE ON SLAB AND GRADE N.T.S.



L2-3 CONTAINER GROWN SHRUB ON SLAB AND GRADE N.T.S.



L2-4 CAST-IN-PLACE CONCRETE PAVING ON SLAB AND GRADE N.T.S.

**KEY MAP:**

**LEGEND:**

- Concrete
- Asphalt
- Sod
- (116.90) Proposed Elevation
- (116.90) Existing Elevation
- Existing Tree
- Proposed Vegetation

- Landscape Notes**
- Dimensions are shown in meters unless noted otherwise. Do not scale drawings.
  - Contractor to review layout on site with Landscape Architect prior to commencing work.
  - Contractor to verify grades and identify discrepancies prior to initiating work. Report any changes, discrepancies, or substitutions to the Landscape Architect for review prior to work.
  - It is the contractor's responsibility to locate and verify all existing utilities and services prior to construction.
  - Plant material support systems must be removed by the contractor at time of final acceptance. No extras will be paid to complete this work.
  - Contractor to provide minimum one (1) year warranty from date accepted on all work unless otherwise specified.
  - Grading and servicing shown is for information purposes. For grading and servicing information refer to engineering drawings.
  - For lighting information and power distribution refer to the electrical drawings.
  - Drawings are for construction only if Landscape Architects stamp is signed and dated by the Landscape Architect, and plans are approved by the Municipality.
  - Tree planting within the municipal right-of-way to be undertaken by the Municipality unless noted otherwise.
  - Unless otherwise specified all landscaped areas are to be sodded.
  - Unless otherwise specified, all undeveloped areas shall be undisturbed and kept free and clear of debris.
  - The Owner is to be aware of the Migratory Birds Convention Act, 1994. This Act is implemented by Environment Canada and the Owner is to make every effort to avoid removal of vegetation during the period of March 31st to August 31st.

**STAMP:**

NOT FOR CONSTRUCTION

**WHITEHOUSE URBAN DESIGN**  
LANDSCAPE ARCHITECTS & URBAN DESIGNERS

**REVISIONS / SUBMISSIONS**

NO.	DESCRIPTION	DATE:

1 Issued for OPA/ZBA 2024-10-31

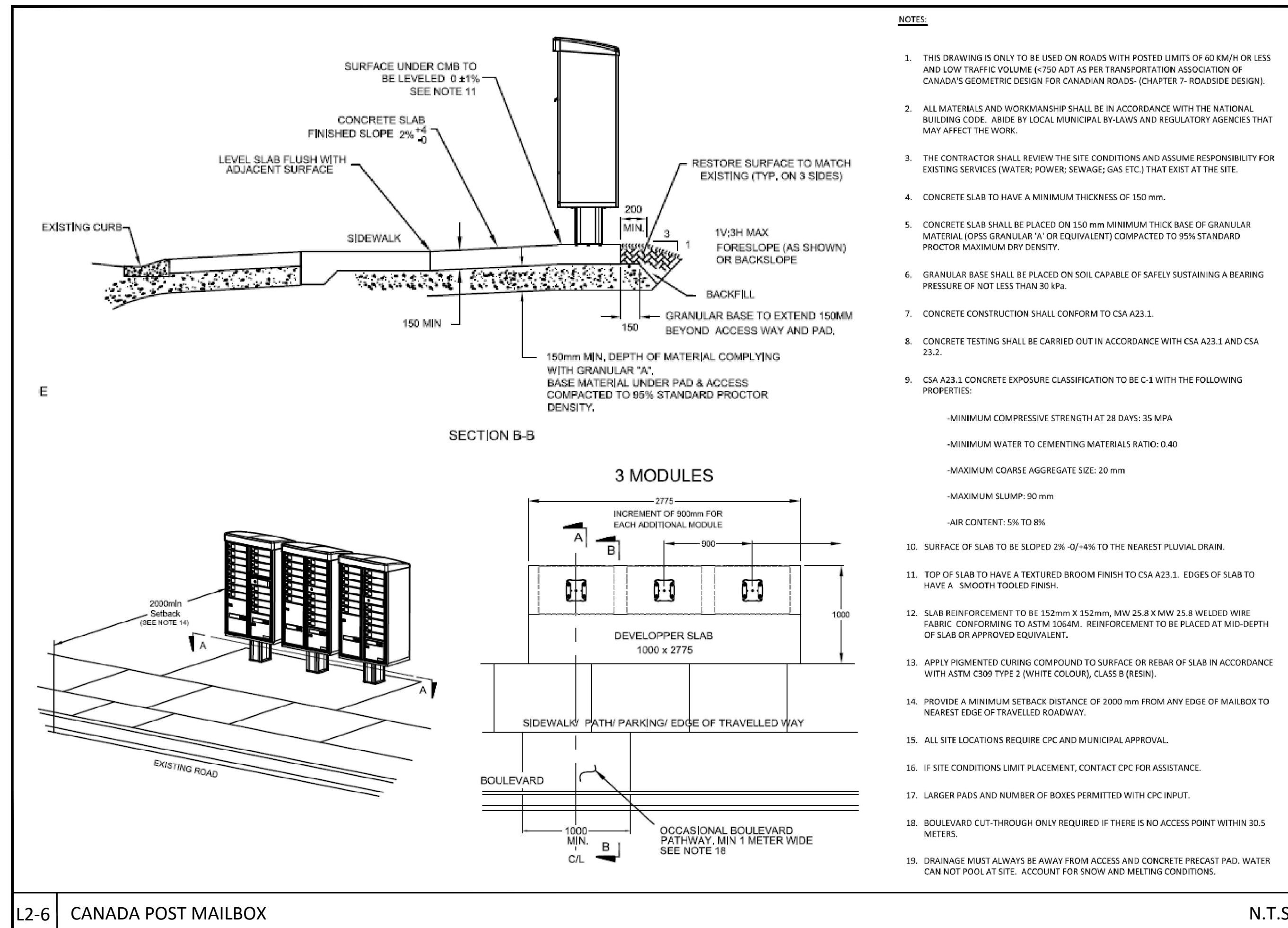
**CLIENT:**  
Albany Street Investments Limited

**PROJECT TITLE:**  
63 Albany Street

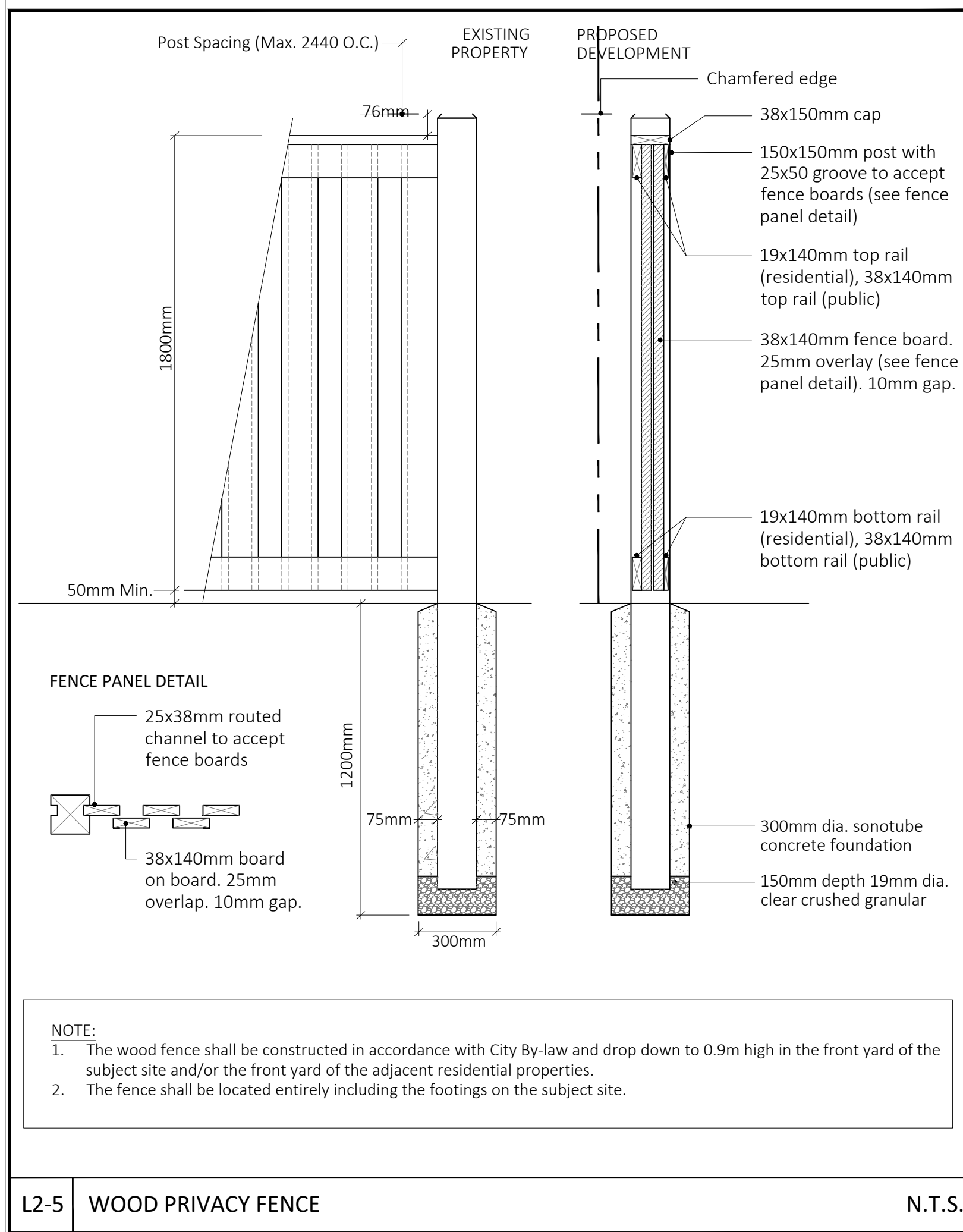
**SHEET TITLE:**  
Details

**DWG No. L2** DRAWN BY: JJ  
**SHEET No. 2 of 2** DESIGN BY: LWS and JJ  
**PROJECT No: 063-21** CHECKED BY: LWS  
**SCALE: As shown** NORTH ARROW:

Whitehouse Urban Design Inc.  
3 Studebaker Place, Unit 1, Hamilton, ON L8L 0C8  
905-546-1897



L2-6 CANADA POST MAILBOX N.T.S.



L2-5 WOOD PRIVACY FENCE N.T.S.