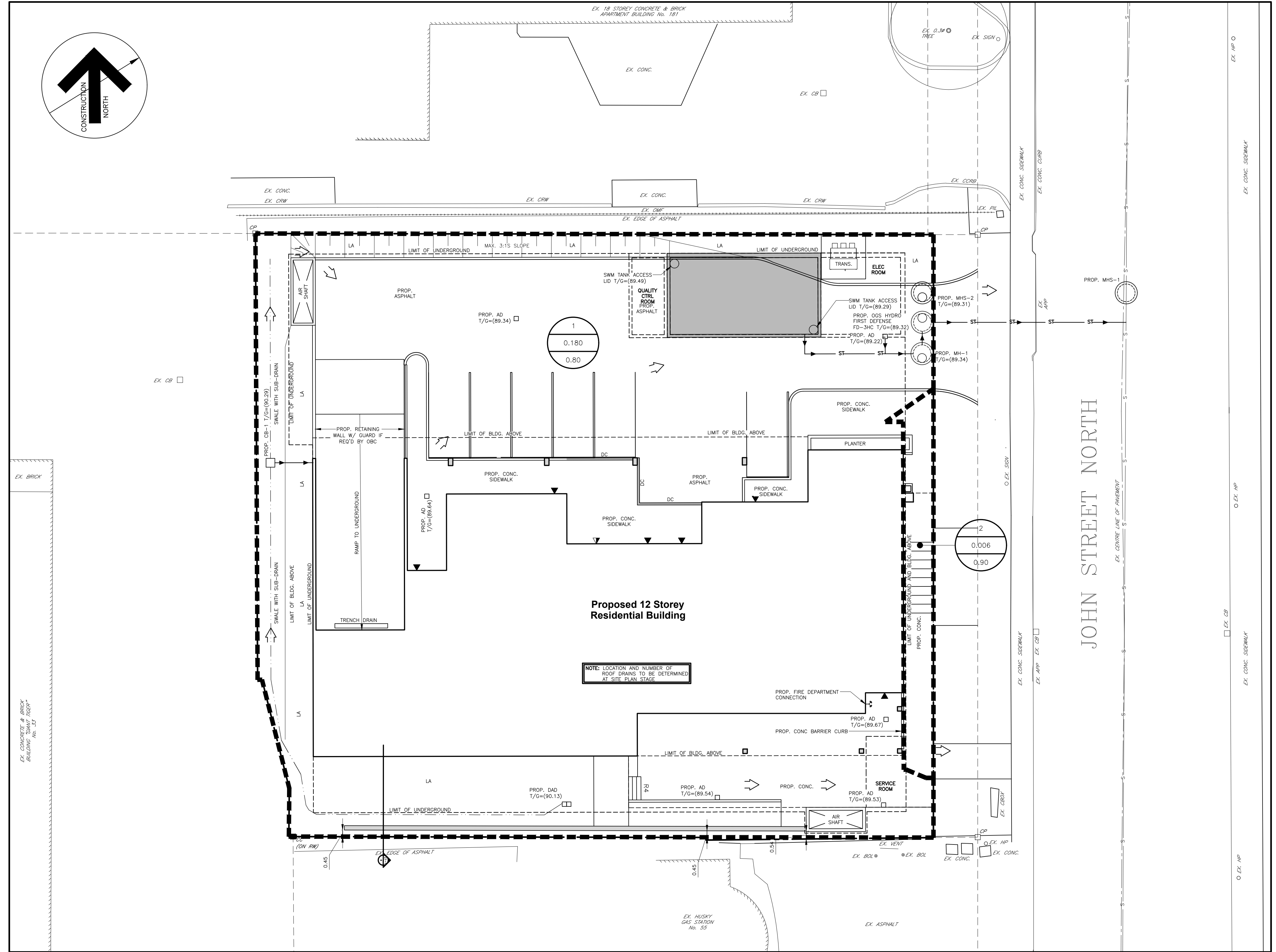
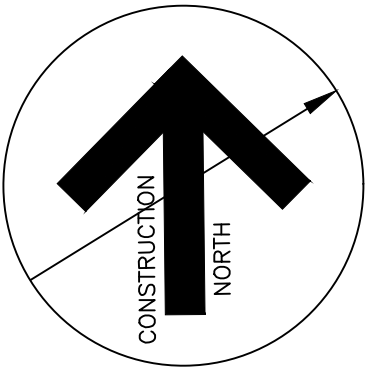


LEGEND

	PROPOSED CATCHMENT AREA
	CATCHMENT NAME
	CATCHMENT AREA
	IMPERVIOUSNESS COEFFICIENT



1 Proposed Area Drainage Plan
C3-1



Contractor must verify all dimensions on the Project Site and report any discrepancies before proceeding with the Work.

This drawing is a part of the Contract Documents and is to be read in conjunction with all other Contract Documents.

© COPYRIGHT - LANHACK Consultants Inc. All rights reserved.

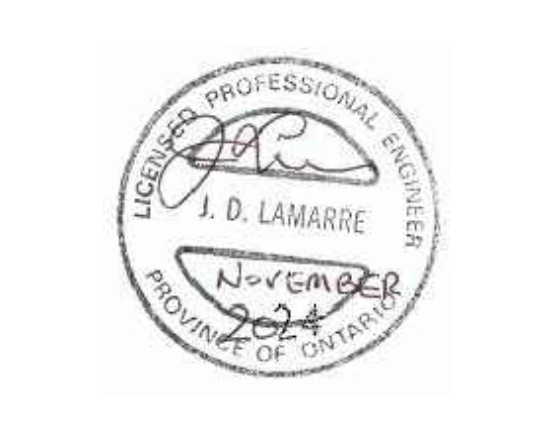
SOURCE
- EXISTING BOUNDARY SURVEY AND TOPOGRAPHICAL INFORMATION OBTAINED FROM A.T. MCCLAREN LTD., DWG NO. 36814, DATED - DEC 23, 2021

THE POSITION OF THE POLE LINES, CONDUITS, WATERMANS, SEWERS, AND OTHER UTILITIES AND STRUCTURES ARE NOT NECESSARILY SHOWN ON THE CONTRACT DRAWINGS, AND WHERE SHOWN, THE ACCURACY OF THE POSITION OF SUCH UTILITIES AND STRUCTURES IS NOT GUARANTEED.

Revision Record

No.	Description	Date (m/d/y)
C	RE-ISSUED FOR ZBA/OPA	11/19/24
B	RE-ISSUED FOR ZBA/OPA	02/14/24
A	ISSUED FOR ZBA/OPA	12/02/22

Issue Record



NOT FOR CONSTRUCTION

LANHACK CONSULTANTS INC.
Consulting Engineers
1709 Upper James Street
Hamilton, ON L9B 1K7
Tel: (905) 777-1454
Fax: (905) 336-8142

Proposed 12 Storey Residential Building
175 JOHN STREET NORTH
HAMILTON, ON

Date: NOVEMBER 2024
Drawn By: GRW
Chkd By: SMP
Scale: AS NOTED

Proposed Drainage Area Plan

Project No.: 22080	Drawing No.: C3-1	Rev.: C
--------------------	-------------------	---------

Plot Date: 11/20/24
M:\2022\22080 - 175 John St. N., Penn Del Sole\DWG\22080_C3-1_Drainage Area Plans.dwg