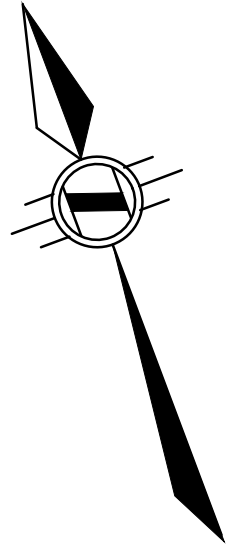


PLAN OF SURVEY
OF PART OF
LOTS 45 & 46
CONCESSION 2
GEOGRAPHIC
TOWNSHIP OF ANCASTER
AND
LOT 17
REGISTERED PLAN 740
IN THE
CITY OF HAMILTON

SCALE 1:250 METRIC



S.D. McLAREN, O.L.S. - 2020



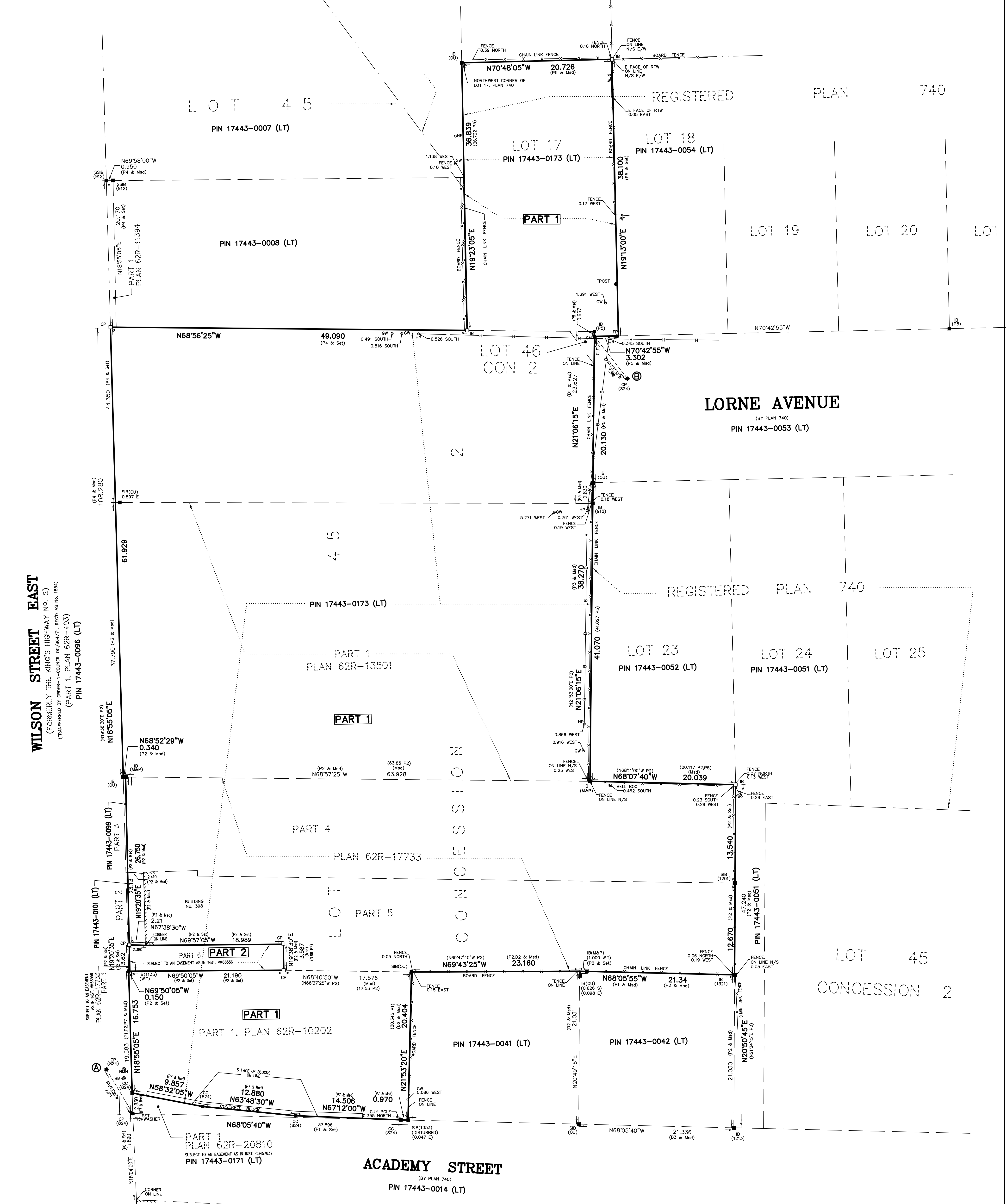
SCHEDULE			
PART	LOT	CON/PLAN	PIN
1	LOT 17	PLAN 740	ALL OF PIN 17443-0173 (LT)
2	PART OF LOTS 45 & 46	CONCESSION 2	

PLAN 62 R-
RECEIVED AND DEPOSITED
Date _____

REPRESENTATIVE FOR
LAND REGISTRAR FOR THE LAND
TITLES DIVISION OF MENTWORTH (No. 62)

I REQUIRE THIS PLAN TO BE
DEPOSITED UNDER THE LAND
TITLES ACT.
Date JULY 8, 2020

S. DAN McLAREN, O.L.S.



WILSON STREET EAST
(FORMERLY THE KING'S HIGHWAY No. 2)
(TRANSFERRED BY ORDER-IN-COUNCIL 02/06/17/1. REGD AS No. 1804)
(PART 1, PLAN 62R-403)
PIN 17443-0086 (LT)

LORNE AVENUE
(BY PLAN 740)
PIN 17443-0053 (LT)

ACADEMY STREET
(BY PLAN 740)
PIN 17443-0014 (LT)

- LEGEND:**
- DENOTES MONUMENT SET
 - IB IRON BAR
 - CP CONCRETE PIN
 - SIB STANDARD IRON BAR
 - SBB SHORT STANDARD IRON BAR
 - 824 A.T. McLAREN, O.L.S.
 - 912 A.J. CLARKE, O.L.S.
 - 1135 L.G. WOODS, O.L.S.
 - 1213 J.D. PETERS, O.L.S.
 - 1355 G.E. GOODY, O.L.S.
 - M&P MACKAY MACKAY & PETERS
 - OU ORIGIN UNKNOWN
 - M&I MEASURED
 - P1 PLAN 62R-10202
 - P2 PLAN 62R-17733
 - P3 PLAN 62R-13501
 - P4 PLAN 62R-11384
 - P5 REGISTERED PLAN 740
 - P6 PLAN 62R-403
 - P7 PLAN 62R-20810
 - D1 INSTRUMENT V425490
 - D2 INSTRUMENT C0112278
 - D3 INSTRUMENT C0454236
 - FB FENCE POST
 - BF BOARD FENCE
 - CLF CHAIN LINK FENCE
 - SLF STONE RETAINING WALL
 - HP HYDRO POLE
 - SW SUT WIRE
 - ∕SW NOT TO SCALE

BEARING NOTE:
BEARINGS ARE UTM GRID, DERIVED FROM OBSERVED REFERENCE POINTS A AND B, BY REAL TIME NETWORK OBSERVATIONS, UTM ZONE 17, NAD83 (CSRS) (1997.0)

NOTE:
DISTANCES ARE GROUND AND CAN BE CONVERTED TO GRID DISTANCES BY MULTIPLYING BY THE COMBINED SCALE FACTOR OF 0.999690148

INTEGRATION DATA

POINT ID	NORTHING	EASTING
ORP @	4786675.660	583201.037
ORP @	4786738.477	583301.484

COORDINATES CANNOT, IN THEMSELVES, BE USED TO RE-ESTABLISH CORNERS OR BOUNDARIES SHOWN ON THIS PLAN.

METRIC NOTE
DISTANCES AND COORDINATES SHOWN ON THIS PLAN ARE IN METRES AND CAN BE CONVERTED TO FEET BY DIVIDING BY 0.3048

SURVEYOR'S CERTIFICATE
I CERTIFY THAT:
1. THIS SURVEY AND PLAN ARE CORRECT AND IN ACCORDANCE WITH THE SURVEYORS ACT, THE SURVEYORS REGULATIONS AND THE REGULATIONS MADE UNDER THEM.
2. THE SURVEY WAS COMPLETED ON THE 10th DAY OF JUNE, 2020

S. DAN McLAREN, O.L.S.

A.T. McLaren Limited
LEGAL AND ENGINEERING SURVEYS
69 JOHN STREET SOUTH, SUITE 230
HAMILTON, ONTARIO, L8N 2Z9
PHONE (905) 527-8559 FAX (905) 527-0032
Drawn: JB Checked: RBM One Check: MW Scale: 1:250 Dep. No.: 34528-17